



Friends for Life

The Eppendorf *epMotion*® Series:
Discover the variety of automated liquid handling



Enjoy the new *epMotion* series through easy to use and flexible automation of your applications and highly reproducible and accurate pipetting results.

»Automation means precision and reduced workload in one—discover the possibilities for your lab.«

With the new Eppendorf epMotion family of automated pipetting systems, you will see things in a new light. All your routine pipetting tasks, whether small or large, will be automated with more accuracy and reproducibility than you might have experienced with manual pipetting. Learn how simple it is to switch from manual work to automation.

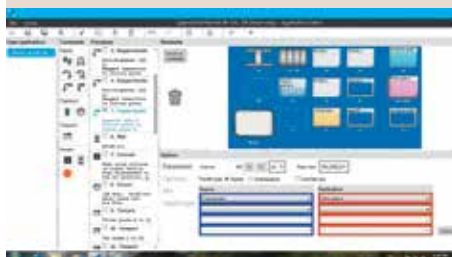
Robust hardware

- > epMotion systems are available in 3 sizes, all designed with minimal footprint
- > Self checking robotic system, that reduces startup time
- > High precision dispensing tools for 1 to 1000 µL
- > Optical sensor verifies worktable loading before the run



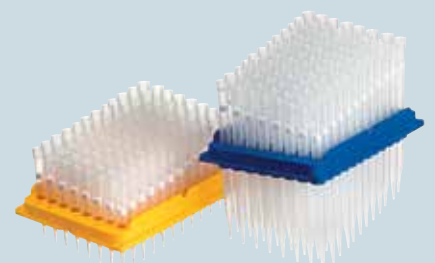
epBlue™—Intuitive Software

- > Enjoy the new concept of user guided software assistants to start right away
- > Learn all the programming flexibility you need in hours, not days
- > Upgradeable to barcode tracking and GLP/GMP software versions



epMotion Accessories, Consumables & Services

- > Get great diversity with large portfolio of accessories
- > As an open platform epMotion works with your favorite labware
- > High quality consumables guarantee high accuracy and reproducibility of your results
- > Choose our premium service to support and maintain your equipment operation



Eppendorf epMotion Portfolio



Eppendorf epMotion 96

The new epMotion 96 is an easy to use bench top system for high precision pipetting in 96- and 384-well plates. It overcomes the limits of manual multichannel pipetting with its ergonomic design and intuitive controls. epMotion 96 is a great tool for anyone who needs fast and precise liquid handling in 96- or 384-well formats. Save time and money while getting better reproducibility of your results from cell based assays, ELISA, cell seeding, nucleic acid quantification, plate reformatting or other applications.

Product features epMotion 96

- > Electronic pipetting with parallel piston movement for better precision and reproducibility
- > Auto-detection of tip sizes without the need to change heads
- > Two tip sizes covering the 0.5 μL to 300 μL operational range for maximum accuracy



Eppendorf epMotion 5070

Our smallest member of the epMotion family is the most compact solution for accurate and reproducible automated pipetting. This makes the epMotion 5070 a perfect match for any routine application such as serial dilutions, reagent distribution, sample transfer from tubes to plates, and sample normalization.

Product features epMotion 5070 / 5070f

- > 4-position worktable and 3 virtual positions
- > Small footprint of 65 x 48 cm² fits on small lab bench
- > Space saving touch screen tablet
- > Automatic tool exchange for 2 tools
- > Reuse tip capability



Eppendorf epMotion 5073

These automated pipetting systems are uniquely tailored for PCR setup and nucleic acid purification, yet retain the flexibility that allows their use as open platforms for diverse automated liquid handling applications. They automate and simplify what are traditionally complex, labor intensive pipetting tasks, saving time and improving the reliability and reproducibility of results.

Product features epMotion 5073I / 5073m

- > 6-position worktable
- > Application specific software assistants, tools and accessories included
- > Option for gripper, 1 thermal module* or Eppendorf 3D-MagSep™ module**
- > CleanCap option for UV decontamination and HEPA air filter

* Available only with P5073

** Already included with M5073



Eppendorf epMotion 5075

The epMotion 5075 is the ideal solution for diverse liquid handling demands. It offers the same outstanding accuracy and precision as epMotion 5070 & 5073. The available options make the 5075 an excellent tool for applications such as next generation sequencing, real-time PCR set-up, magnetic bead based purification, cell based assays or any routine pipetting tasks.

Product features epMotion 5075I / 5075t / 5075v / 5075vt / 5075m

- > Up to 15 worktable positions
- > MultiCon™ PC controller with simulation, network and software upgrade options
- > Automatic exchange of 4 dispensing tools
- > Option for gripper and 1–3 thermal modules
- > System control by touch, mouse, keyboard or network
- > Available ThermoMixer®, Vacuum manifold and magnetic separation options
- > Available as CleanCap versions

Eppendorf epMotion Feature Overview



Optical Sensor

Checks worktable loading for tips (type and number), labware type, and even liquid volumes in vessels for safe operation



Outer housing

Completely contained housing including door safety mechanism for user and sample protection



CleanCap

with UV lamp for decontamination and HEPA filter for clean air inside. Optional for new epMotion 5073 & 5075 versions



Dispensing Tools

6 high precision dispensing tools from 1 to 1000 μ L are available for programming; single- or multichannel; all calibrated compliant to ISO 8655



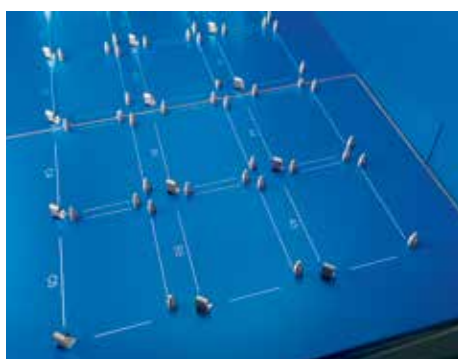
Gripper Tool

Allows transport of labware on worktable of 5073 or 5075 versions. Stacking of up to 5 plates is possible



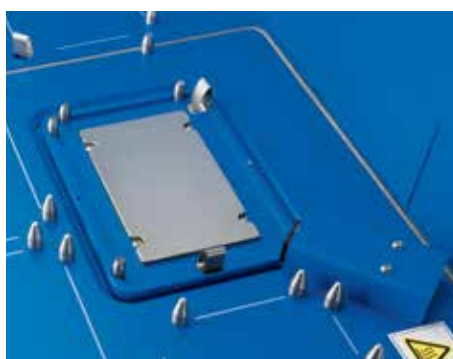
Automatic Tool Exchange

Program the tools you need for your application, 6 dispensing tools and a gripper. Dependent on epMotion version 3 to 5 tools can be provided on the worktable for automatic exchange.



Small Footprint - Large Deck

With 4, 6, 12 or up to 15 positions in SBS/ANSI format the epMotion family gives you all the flexibility you need for your application



ThermoMixer

Fully integrated ThermoMixer with ^{2D}Mix-Control improves yield and application results, e.g. resuspending bacteria pellets or magnetic beads. Peltier element for heating and cooling of sample and/or reagents.



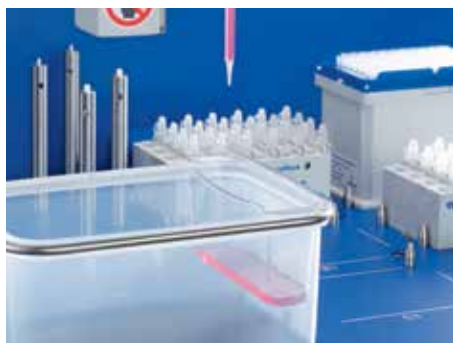
Eppendorf 3D-MagSep Technology

Combination of magnetic finger module and ThermoMixer facilitates magnetic separation, mixing and temperature control in one location



Integrated Vacuum Station

Loaded and unloaded with the gripper, the vacuum station adapts automatically to any filter plate type. Silent operation of internal pump with no need for extra tubes, wiring or reservoir maintenance



Liquid waste tub

Extra reservoir with large working volume can be mounted in waste box of epMotion and maximize deck space



Intuitive software

The epMotion with epBlue software offers the easiest to learn and most convenient way to use an automated liquid handling system.

International Users Love epMotion!

Whether it is genomics applications, like PCR set-up, SNP detection, next generation sequencing, or nucleic acid purification, complex assay set-up or cell culture applications, read what scientists worldwide say about epMotion.

»» *The Eppendorf 5075's improvements to accuracy, reproducibility, and throughput has changed how we approach almost everything we do in the lab. In addition, the 5075 was instrumental in the development and validation of our novel HIV phenotyping test.* ««

Richard Gibson
Assistant Director · University
Hospital Translational Laboratory ·
Cleveland, USA

»» *My group has made great use of the epMotion 5073. It provides sufficient flexibility for my group to use routinely for 384 well qPCR setup, enabling us to increase throughput and reduce reagent usage. More importantly, the modular nature of the design and flexibility of the instrument runs, mean we have been implementing in a range of other molecular biology applications that benefit from automation, such as scalable plasmid construction. The ability to upgrade this instrument with gripper arm, temperature control and both single and multichannel capabilities means we are in a good position to adapt rapidly as new protocols are developed.* ««

Dr. Steven M. Pollard
UCL Samantha Dickson Brain Cancer Unit · University
College London · London, United Kingdom

»» *We are using our three epMotion 5075 systems already for several years for automated gDNA purification from plant and fungi, PCR setup for routine analysis of fungicide and herbicide resistance genes and other general liquid handling tasks. The epMotion automation has significantly reduced our work load for these assays and made our workforce more efficient, because team members can now focus on downstream applications. We also appreciate the better reproducibility of results and the high flexibility we get with this easy to handle automation system.* ««

Bernhard Jaser
Senior Research Fellow · Agrobiologic Research &
Consulting · EpiLogic GmbH · Freising, Germany

»» *We highly value the epMotion 5075 TMX for its accuracy, easy programming, and its flexibility in adapting to different protocols and throughputs. We obtain excellent results in our real-time PCR assays and sample library preparation for our NextGen sequencing protocols.* ««

Gisela Mir PhD
Head, Molecular Genomics facility · Cancer
Research · Peter MacCallum Cancer Centre ·
Melbourne, Australia

» We are happy to use the epMotion 5070 for our Anti-cancer Drug Screening as it accelerates our pipetting work for viability and apoptosis cell assays to combat a cancer cell line with the reproducibility that we need. «

Gilberto C. Franchi

Pharmacist research fellow · University of Campinas · São Paulo, Brazil

» epMotion 5075 has been installed in our lab since two years and is working satisfactorily. The system is completely open with respect to labwares and consumables. The features we liked in the instruments being the contact free liquid level sensing, its volume accuracy and low maintenance cost. We also appreciate the support extended by Eppendorf India in our Application setup. «

Dr. D. Srinivas Reddy

Special project Scientist · PTTC, International Crops Research Institute for the Semi-Arid Tropics · Hyderabad, India

» Our group has made fantastic use of the epMotion 5070 and it now forms an indispensable core of our small and heavily used qPCR facility. Its reliability, accuracy, ease-of-use has been key to the success of our qPCR experimentation. The ability to accurately and reproducibly pipette low volumes has both increased the quality of our results and kept consumable costs under control. This has meant more results for the same money, always something to bring a smile to the laboratory head. «

Dr. Chris Winefield

Senior Lecturer in Plant Biochemistry and Molecular Biology · Lincoln University, New Zealand

» epMotion P5073c is a robust system and yet with the flexibility which satisfied our laboratory's multiple functions. «

Dr. Masafumi Inoue

Group Leader (Molecular Diagnostics Group) · Experimental Therapeutics Centre (ETC), Agency for Science · Singapore



» The Eppendorf epMotion 5070 has been installed in our lab and is working satisfactorily. The system has been used to automate some of our assays such as preparation of cDNA, and setting up RTQ PCR assays in 96-well format. In all we are more than satisfied with the performance of the system and support provided by the technical experts. «

Dr. M. Padigar

Associate Director – Biomarker discovery · Piramal Life Sciences Ltd. · Mumbai, India



Eppendorf epMotion 96

The epMotion 96 improves workflow and ensures reproducibility by making pipetting whole 96- and 384- well plates faster and easier than ever.

Product features

- > Pipette from 0.5 µL to 300 µL with one system
- > Electronic pipetting with synchronous 96-channel piston movement for better precision and reproducibility of results
- > Auto-detect function for tip size
- > Use 50 µL and 300 µL reload tips for best accuracy
- > Intuitive and industry proven software concept and convenient touch screen control
- > Intelligent, preset applications: aspiration, dilution, multi dispense, pipette and mix
- > Easy and rapid tip loading and reloading
- > Compact design to fit under the laminar flow hood
- > Reduced risk of repetitive stress injury (RSI)

Applications

- > Replication and reformatting of microplates
- > Cell seeding and media change
- > Reagent and compound addition
- > 384 wells by 4 times 96 well pipetting
- > Cell-based assays
- > ELISA handling (plate coating and washing)
- > Biochemical assays

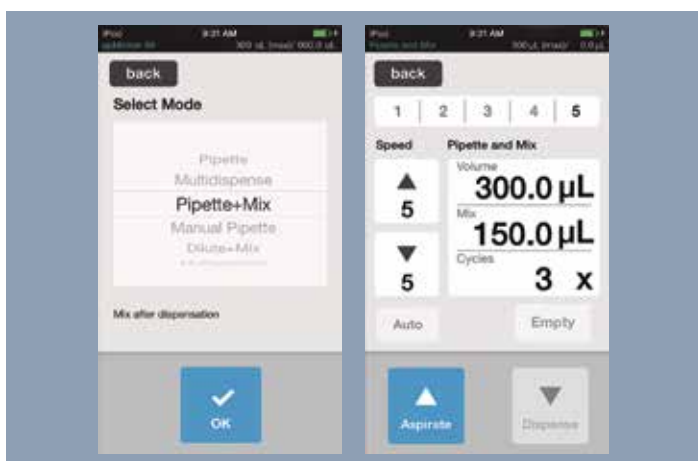
Ease Your Workflow



1. Insert the appropriate tip type for 0.5–50 μL or 5–300 μL tips into the loading frame.



2. Slide loading frame into epMotion 96 and apply lever to easily attach tips to the 96 nose-cone array.



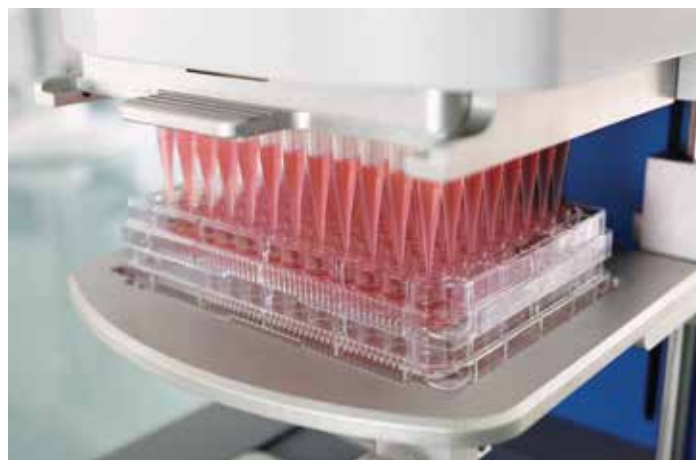
3. Select the desired pipetting mode and set the pipetting parameters.



4. Adjust plate height using the lifting table.



5. Touch »Aspirate« to take liquid from source plate.



6. Change to destination plate and touch »Dispense«.



Eppendorf epMotion 5070

The epMotion 5070 is the most compact solution for accurate and reproducible automated pipetting. It is a perfect match for all routine applications, such as serial dilutions, reagent distribution, sample transfer from tubes to plates and sample normalization.

- > 4 labware positions, plus three virtual positions
- > Pipetting range from 1 μL to 1,000 μL
- > Compatible with micro- and PCR plates up to 384 wells
- > Compatible with tubes from 0.2 mL to 50 mL
- > Liquid level detection without conductive tips
- > Optical sensor checks the loaded deck
- > Safety hood with monitored front door
- > Automatic exchange of 2 pipetting tools



Automatic tool exchange for more flexibility of pipetting variations



Eppendorf epMotion 5070f

With **the epMotion 5070f** all the benefits of automated pipetting are available for liquid handling tasks inside a cell culture bench or fume hood. Cell maintenance is one of the most repetitive tasks in life science research. The epMotion 5070f allows you to automate key processes such as seeding cells, media changes, or performing assays e.g. cytotoxicity. It enables you to handle 6, 24 or 48 well plate or even denser formats from 96 to 384 wells.

- > Same as 5070, plus
- > Light barrier beam—monitors the closure of the bench hood for safety
- > Pre-programmed cell culture labware
- > Sterile pipet tips available
- > Autoclavable pipetting tools
- > Automated tool exchange



5070f in cell flow bench



Eppendorf epMotion 5073I

The epMotion 5073I is a flexible system for automating time consuming and complex pipetting procedures. The epBlue software makes programming new protocols easier than ever. The EasyCon controller comes pre-loaded with a PCR Assistant providing step-by-step guidance through various protocols. The high accuracy of the epMotion 5073 makes all pipetting procedures more precise, reproducible and fully standardized, resulting in the highest quality data. The epMotion P5073 bundle package includes all accessories required for preparing PCR samples; only consumables need to be ordered separately.

Applications

- > PCR set-up
- > Serial dilution and normalization of samples
- > Sample or reagent transfer
- > Sample mixing and tempering
- > Assay set-up
- > Media change and other cell culture applications

- > 6 ANSI/SLAS microplate positions
- > Compact control tablet with touchscreen or mouse operation, USB data transfer
- > Software assistants for simple, step-by-step application programming
- > Optical sensor¹ for detecting liquids, labware, tips
- > Automatic replacement of 2 pipetting tools
- > Volume range of 1 to 1,000 µL for maximum pipetting accuracy
- > Compatible with tubes (0.1 to 50 mL) and microplates with up to 384 wells
- > Calibrated 1-channel and 8-channel pipetting tools
- > Optional UV lamp and HEPA filter system for decontamination and clean air conditions
- > Fully enclosed, compact housing with door lock
- > Optional MultiCon touch PC controller with mouse and keyboard. Thermal module for heating or cooling of samples or reagents.

¹ US patent 6,819,437 B2



Eppendorf epMotion 5073m

The epMotion 5073m is 2 systems in one. First, a customized system for automated nucleic acid purification of 1 to 24 samples using the MagSep reagent kits. The Eppendorf EasyCon™ tablet and Prep Assistant software provide simple operation with step-by-step guidance through the process. Secondly, a flexible system for automating time-consuming liquid handling tasks. The pipetting procedure is more precise, reproducible and fully standardized, making your workplace more ergonomic and safer. The epMotion M5073 bundle package includes all accessories required for nucleic acid purification; consumables sold separately.

Applications

- > DNA and RNA purification
- > PCR set-up
- > Sample or reagent transfer
- > Sample mixing and tempering
- > Assay set-up
- > Media change and other cell culture applications

- > Optical sensor¹ for detecting liquids, labware, and tips
- > Volume range of 1 µL to 1,000 µL for maximum versatility
- > Optional UV lamp and HEPA filter system for sterilization and clean air conditions.
- > Calibrated 1-channel and 8-channel pipetting tools
- > Software assistants for simple, step-by-step application programming
- > Automatic replacement of 2 pipetting tools and gripper
- > Compact control tablet with touchscreen or mouse controls and USB data transfer
- > 6 ANSI/SBS worktable positions
- > 3D MagSep technology; mixing, temperature control, and magnetic separation in one location
- > Compatible with micro-plates of up to 384 wells and 0.2 mL to 50 mL tubes

¹ US patent 6,819,437 B2



Eppendorf epMotion 5075I

The epMotion 5075I is the perfect solution for more complex pipetting tasks. It offers the same precision and accuracy as the epMotion 5070 & 5073, making it the ideal tool for demanding applications and higher throughput.

The 15 positions and the automatic tool exchange expand the application range to handle complex patterns and higher sample numbers. With heating and cooling and the gripper option, the epMotion 5075I is one of the most flexible automated liquid handling systems available.

- > 15 SBS/ANSI deck positions
- > Automatic exchange of 4 pipetting tools and gripper
- > Plate stacking – 5 microplates or 2 deepwell plates can be stacked by the gripper
- > 3 thermal module options for heating or cooling of samples or reagents

- > CleanCap option – UV lamp and HEPA filter for decontamination and clean air conditions
- > MultiCon PC controller to run preinstalled epBlue software by touch or mouse and keyboard
- > Upgradeable for barcode tracking and GLP/GMP software versions
- > LH assistant for general liquid handling tasks





Eppendorf epMotion 5075v

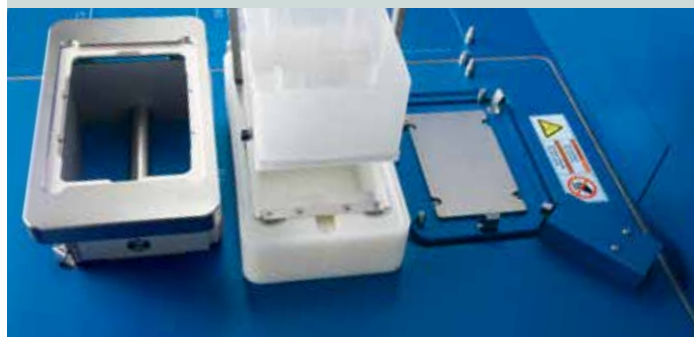
The epMotion 5075v is all about productivity. With its integrated vacuum station the epMotion 5075v allows true walk-away automation of purification protocols that rely on vacuum filtration.

- > Same as 5075I, plus
- > 12 SBS/ANSI deck positions
- > Integrated vacuum pump—silent operation, no tubing, wiring, and reservoirs to maintain

- > Vacuum station is fully integrated and automatically adapts to filter plates controlled by software
- > Gripper for plate & labware transport
- > 3 thermal module options (2 in case of 5075vt)
- > Also available as 5075vt version with integrated ThermoMixer



epMotion 5075vt with integrated ThermoMixer





Eppendorf epMotion 5075t

The **epMotion 5075t** includes an integrated ThermoMixer module to mix, heat or cool samples and reagents. The ThermoMixer can be loaded and unloaded with the gripper and pipetting to the mixer is possible before and after mixing steps. It is fully software controlled enabling pipetting onto other worktable positions while the mixer is in operation.

- > Same as 5075I, plus
- > Integrated ThermoMixer with 2D Mix-Control technology
- > Temperature control range 15°C below RT to 95°C
- > Automatic securing of labware for mixing up to 2000 rpm
- > 14.5 deck positions, 14 SBS/ANSI plus small position for special reagent reservoir rack (3 reservoirs)
- > 2 thermal module options



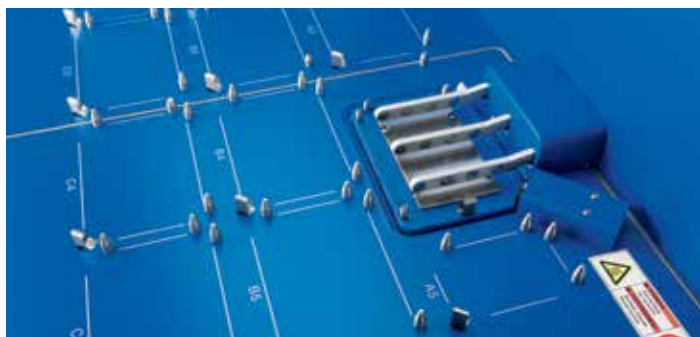


Eppendorf epMotion 5075m

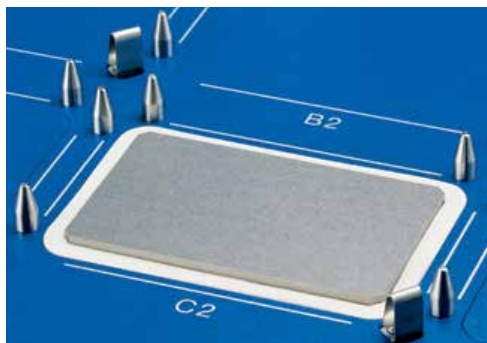
The epMotion 5075m is the most flexible member of the epMotion family of automated pipetting systems. With a large number of worktable positions and the mixing, temperature control and magnetic bead separation abilities it's ideally suited for various applications in the lab.

- > Same as 5075t, plus
- > Eppendorf 3D-MagSep Technology—Facilitates magnetic separation, mixing and temperature control in one location

- > Dedicated Eppendorf MagSep reagent kits for nucleic acid purification from 1–24 samples
- > Add optional PrepRack and ReagentRack for use of Eppendorf MagSep kits. Just open bottles
- > 3 × Prep assistants for user guided automation of nucleic acid purification with Eppendorf MagSep kits
- > 4 × PCR assistants to streamline PCR set-up workflow



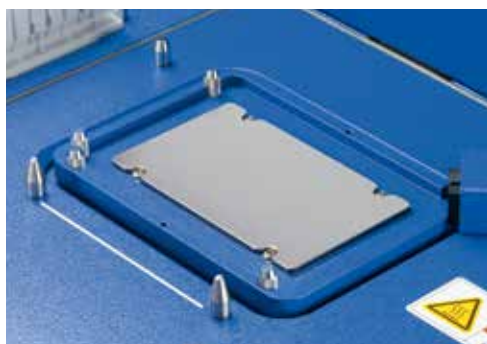
Factory-installed and Upgrade-Options



Thermal module

(Catalog No. 960002181)

- > Peltier powered thermal module for on deck incubations
- > Temperature range is 0°C–110°C
- > Available as upgrade for epMotion P5073 (1 per unit), 5075I (3 per unit), 5075t (2 per unit), 5075m (2 per unit), 5075v (3 per unit) and 5075vt (2 per unit). For epMotion 5075 with serial number < 4,000 upgrades are possible for 5075 LH (3 per unit), 5075 TMX (1 per unit), and 5075 VAC (2 per unit).



ThermoMixer (TMX)

(Catalog No. 960021055 for epMotion serial number <4,000)

(Catalog No. 5075000630 for epMotion serial number >4,000)

- > Peltier powered module integrated into epMotion deck (5075t) for on deck incubations at temperature and vigorous 2-dimensional mixing
- > Temperature range 4°C–95°C
- > Mixing speed range 300–2,000 rpm
- > Available as upgrade for 5075I and 5075v



ThermoMixer with MagSep module

- > Peltier powered module integrated into epMotion deck (M5073 and 5075m) for on deck incubations at temperature and vigorous 2-dimensional mixing and magnetic separation
- > Temperature range 4°C–95°C
- > Mixing speed range 300–2,000 rpm
- > Compatible with 2 mL microcentrifuge tubes



Vacuum module (VAC)

(Catalog No. 960021011)

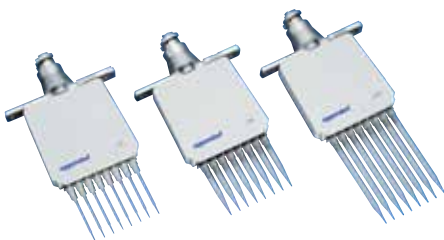
- > Adjustable vacuum manifold for fully automated handling of filter plates for nucleic acid isolation integrated into epMotion deck (5075v, 5075vt)
- > Multiple frames and spring construction makes it compatible with most filter plates
- > Suction range 0.1–0.85 ± 0.05 Pa
- > Available as upgrade for 5075I and 5075t

epMotion Tools



Dispensing tools—Single-channel

- > High precision single-channel dispensing tools for delivery of volumes from 1–1,000 μL
- > Built in calibration sensor can detect when tool may need adjustment
 - 960001010 – Dispensing tool TS50, 1–50 μL
 - 960001028 – Dispensing tool TS300, 20–300 μL
 - 960001036 – Dispensing tool TS1000, 40–1,000 μL



Dispensing tools—Multichannel

- > High precision eight-channel dispensing tools for delivery of volumes from 1–1,000 μL to SBS format plates and tube strips up to 384 wells
- > Built in calibration sensor can detect when tool may need adjustment
 - 960001044 – Dispensing tool TM50, 1–50 μL
 - 960001052 – Dispensing tool TM300, 20–300 μL
 - 960001061 – Dispensing tool TM1000, 40–1,000 μL



Gripper tool

- > Tool allows for fully automated transport of tube racks, plates and accessories during an epMotion method
- > Tool automatically recognized and exchanged when needed
- > Available for P5073, M5073, 5075l, 5075t, 5075m and 5075v
 - 960002270 – Gripper

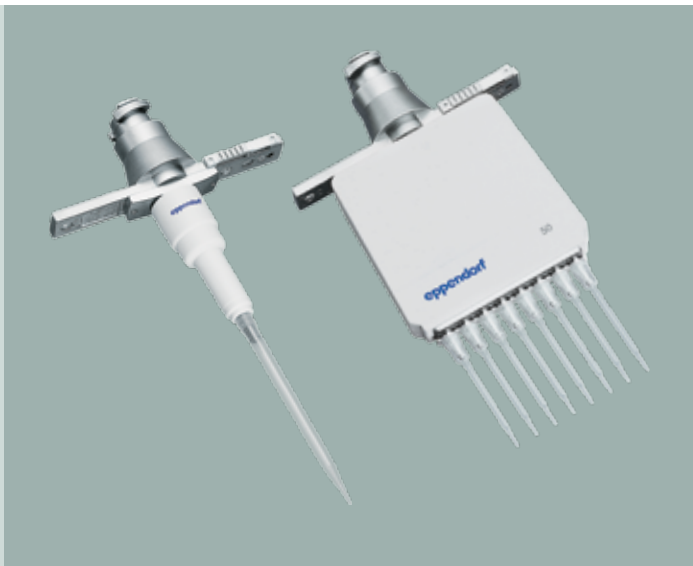
Accuracy and Reproducibility Delivered

epMotion pipetting tools

Based on Eppendorf classic air cushion pipetting technology.

- > Free-jet pipetting, no tubes, no wires, no air bubbles to minimize cross-contamination
- > Excellent pipetting precision, below 2 % CV at 1 μL *
- > Volume range: 1–50 μL ; 20–300 μL and 40–1000 μL
- > Single or 8-channel
- > Autoclavable & easy to maintain
- > Automatic calibration warning
- > ISO 8655 compliance

*Eppendorf application note 168: »Evaluation of the Eppendorf epMotion Pipetting Tools using the Artel MVS®.«



epT.I.P.S. Motion

Special tips for use in automated systems. Each tip is inspected for straightness prior to packaging. This ensures a perfect handling of 96- and 384-well micro- and PCR plates.

- > Color-coded tray for easy volume identification
- > Non-carbonized, pure virgin polypropylene, both tip and box are recyclable
- > Standard, filter, and sterile tips available
- > PCR clean quality grade for filter tips
- > Also available as eco-friendly reload system

Reuse tips feature

The epMotion 5073 and 5075 systems can reuse tips to provide an economical choice for multiple wash steps, for example with ELISA assays. When reusing tips, our special epT.I.P.S. Motion SafeRack tips are recommended.

- > Individual compartments to avoid cross-contamination between used tips
- > Available as standard and PCR clean quality for 50 and 1,000 μL



MagSep Reagent Kits

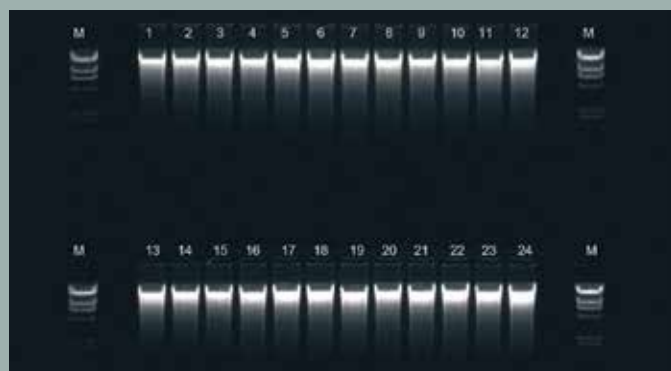
Eppendorf MagSep reagent kits for automated nucleic acid purification of 1 to 24 samples—free-up your time for scientific work

Whether your sample is tissue, cells, bacteria, blood or cell-free body fluids, the MagSep Tissue gDNA kit, MagSep Blood gDNA kit or MagSep Viral DNA/RNA kit are your smart solution for automated nucleic acid purification. The kits are designed for rapid automated small-scale preparation of highly pure nucleic acids based on robust magnetic bead separation using the epMotion M5073 or 5075m. All reagents and tubes that are needed for extraction and elution for 96 samples are provided (e.g. Proteinase K and all buffers).

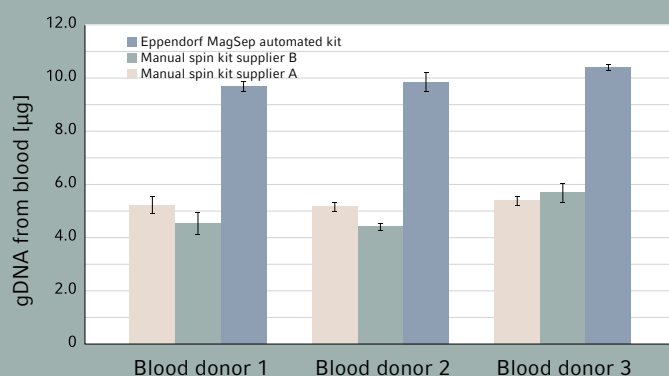
The ready to use reagents come in special trays for 1 to 24 preparations. Just open the vessels, place the tray on the worktable and epMotion will do all the pipetting. If less than 24 samples are run, the tray can be stored for later use.

Benefit from minimal hands-on time with ready to use reagents, special epMotion reagent tray and easy software assistants. Get superior yield and purity versus manual or other automation methods by optimized chemistry and 3D-MagSep technology with the epMotion (typical ratio A260/280 is 1.8 to 1.9) which guarantees reliable and reproducible results in various downstream applications, like genotyping, sequencing, real-time PCR, other enzymatic or chemical reactions.

- > Automatic recognition of kit type and available reagents
- > Variable use of 1 to 24 sample reagents per tray and intermediate storage possible
- > 25 to 200 µL variable choice of elution volume (concentration vs. yield)
- > Eppendorf DNA LoBind Safe-Lock tubes included for maximum DNA recovery



Gel analysis of 24 mouse tail samples purified with MagSep gDNA tissue kit; typical yield 10 µg high molecular weight DNA out of 10 mg tissue; 7.5 µL of 75 µL loaded on gel.



Typical yield of 9 µg gDNA from 200 µL of blood purified via MagSep gDNA blood kit versus manual process of purification (n=3).

epMotion Accessories



Reservoir rack

(Catalog No. 960002148)

- > Versatile rack for holding up to 7 bulk reagents in either 30 mL or 100 mL reservoirs or various tubes from 0.2 mL PCR tubes to 50 mL conical tubes
- > Temperature controlled possible when used in combination with a thermal module and Reservoir Rack Modules TC



Reagent reservoirs

- > Autoclavable reservoir for storing bulk reagents and accessible with multichannel tool
- > Their special geometry minimizes residual volume.
 - 960051009 – Reagent reservoir 30 mL, PCR clean, pk/50
 - 960051017 – Reagent reservoir 100 mL, PCR clean, pk/50



Reservoir Rack Module TC

- > For use in Reservoir racks and temperature controlled when used with a thermal module
- > 10 modules are available for tube volumes from 0.2 mL to 50 mL
 - 960002601 – for 8 x 0.2 mL PCR tubes
 - 960002620 – for 4 x 1.5/2.0 mL tubes, incl. 0.5 mL tube sleeves
 - 960002630 – for 4 x Tubes 12 mm
 - 960002640 – for 4 x Tubes 16 mm
 - 5075799340 – for 4 x Eppendorf Tubes® 5.0 mL
 - 960002650 – for 4 x 15 mL conical tubes
 - 960002660 – for 2 x 50 mL conical tubes
 - 960002670 – for 1 x reservoir 30 mL
 - 960002680 – for 1 x reservoir 100 mL



96-magnets

- 960066123 – Magnum EX universal 96-well magnet plate
- 960066124 – Magnum FLX enhanced universal 96-well magnet plate



Racks

- > 18 different racks available to allow for maximum versatility
- > No temperature control
 - 5075751453 – for 24 x 1.5/2.0 mL tubes, incl. 0.5 mL tube sleeves
 - 5075751275 – for 24 x 1.5/2.0 mL tubes
 - 960002318 – for 96 x 1.5/2.0 mL tubes (requires 2 deck positions)
 - 960002380 – for 24 x Tubes Ø 12 mm; H24 mm (e.g., HPLC vials)
 - 960002351 – for 24 x Tubes Ø 12 mm; H45 mm
 - 960002059 – for 24 x Tubes Ø 12 mm; H63 mm
 - 960002342 – for 24 x Tubes Ø 13 mm; H45 mm
 - 960002041 – for 24 x Tubes Ø 13 mm; H63 mm
 - 960002334 – for 24 x Tubes Ø 14 mm; H45 mm
 - 960002369 – for 24 x Tubes Ø 14 mm; H63 mm
 - 960002326 – for 24 x Tubes Ø 15 mm; H45 mm
 - 960002377 – for 24 x Tubes Ø 15 mm; H63 mm
 - 960002164 – for 24 x Tubes Ø 16 mm; H45 mm
 - 960002032 – for 24 x Tubes Ø 16 mm; H63 mm
 - 960002156 – for 24 x Tubes Ø 17 mm; H45 mm
 - 960002024 – for 24 x Tubes Ø 17 mm; H63 mm (e.g., 15 mL conical)
 - 960002520 – for 1 x SmartCycler® tube rack
 - 960002511 – for 96 x LightCycler® 20 µL/100 µL capillaries



Thermoracks/Thermoblocks

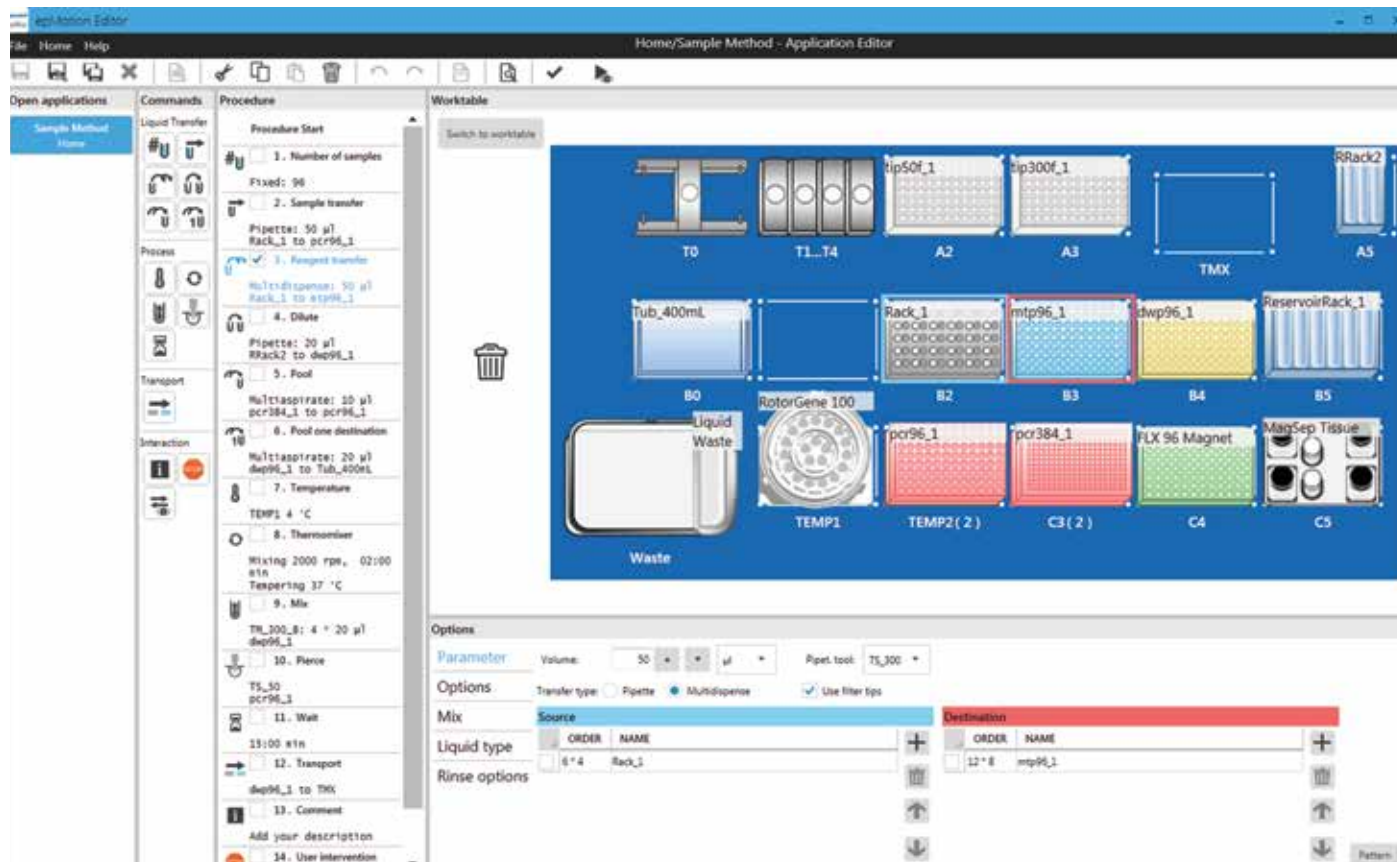
- > Rapid temperature transfer when used with the thermal module
- > Thermoracks can be moved by the gripper
- > Available as TMX version optimized for high speed mixing with ThermoMixer (TMX)
 - 960002083 – for 1 x 96-well PCR plate
 - 5075751666 – for 1 x 96-well PCR plate. With orientation control and 2 clamps for mixing and piercing of semi-skirted plates.
 - 960002091 – for 1 x 384-well PCR plate
 - 960002067 – for 24 x 1.5/2.0 mL tubes, incl. 0.5 mL tube sleeves
 - 960002070 – for 24 x 1.5/2.0 mL tubes, incl. 0.5 mL tube sleeves (TMX version)
 - 960002075 – for 24 x 1.5/2.0 mL tubes
 - 960002080 – for 24 x 1.5/2.0 mL tubes (TMX version)
 - 960002491 – for 24 x Cryotubes® Ø 12.5 mm
 - 5075751526 – for 1 x 72- or 100-tube Qiagen® Rotor-Gene® Rotor-Disc® and 20 x 1.5/2.0 mL tubes (requires 2 deck positions)
 - 960002500 – for 384 x Corbett® 0.1 mL strip-tubes



Thermoadapter

- > Rapid temperature transfer when used with the thermal module
- > Plates can be added/removed from the Thermoadapters by the gripper
 - 960002199 – for 1 x 96-well PCR plate
 - 960002202 – for 1 x 384-well PCR plate
 - 5075751577 – for 1 x Microplate 96 (U or V bottom)
 - 960002391 – for 1 x Eppendorf Deepwell Plate 96/1,000
 - 5075751305 – for 1 x MagNA Pure® sample cartridge
 - 5075751330 – for 1 x Eppendorf Deepwell Plate 96/2,000

epMotion Software—Simplify Your Programming



Description

The epBlue software features an intuitive interface that allows for fast mastery and rapid method design while maintaining versatility and usability. The easy to use drag and drop visual interface makes setting up new methods fast and simple. A variety of commands are available each with its own set of preset parameters that the user can modify to fit particular needs. Commenting gives the option to leave notes when multiple users work on the same protocol. Features such as the ability to reuse tips and multidispense mode minimize tip use reducing the per sample costs. The optional barcode reading tool allows for easy tracking of samples throughout your whole process.

Application support

Get up and running quickly even with the most complex protocols by utilizing our optional expert application support. Over 1400 labware definitions from a large array of manufacturers and the ability to customise new labware allows the epMotion to work with a large array of protocols.

Product features

- > Intuitive drag and drop programming for easy method setup
- > Cut and paste feature allows for fast method modification and adaptation
- > 3D view of workstation and run simulation for easier method optimization
- > Protocol setup using CSV files allows for easy setup of cherry picking protocols
- > Create, edit and simulate applications on any Windows 7 PC with epMotion Editor 40 software
- > Pierce function allows the use of foil sealed plates reducing the risk of contamination
- > The ability to leave comments makes it easy to collaborate on methods
- > Optional epBlue ID software allows sample tracking throughout any protocol through barcode reading
- > Optional epBlue GxP software for GMP and GLP labs complies with 21 CFR part 11 regulations and provides full transparency and accountability through maintenance of log files and digital signatures

User Guided Programming for Everyone

The innovative Eppendorf software assistant concept is a new level of user friendly programming of automated liquid handling systems.

With a few simple questions the user is guided through the programming of the automation process. It is a quick and easy way to use epMotion and start methods with only little training efforts. Various application specific assistants are available for PCR set-up, nucleic acid preparation or general liquid handling, and Eppendorf will continuously extend the range of assistants in the future.

The new software assistants are so intuitive that any lab member can start automation without extensive programming expertise now.

- > Quick access by desktop icons
- > User guided step-by-step programming
- > Settings are stored for next use
- > Methods can be saved for further modification in epBlue software
- > 3 Prep assistants
- > 4 PCR assistants
- > 7 LH assistants

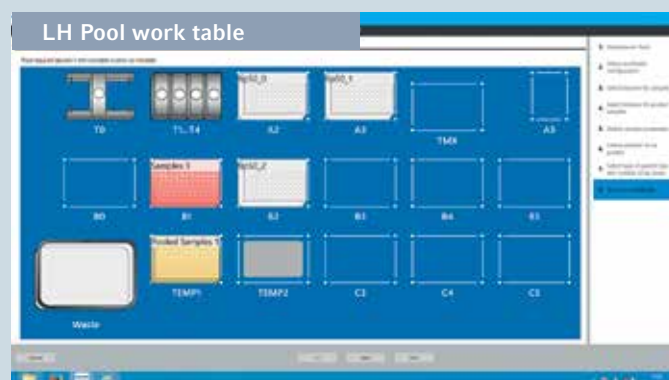
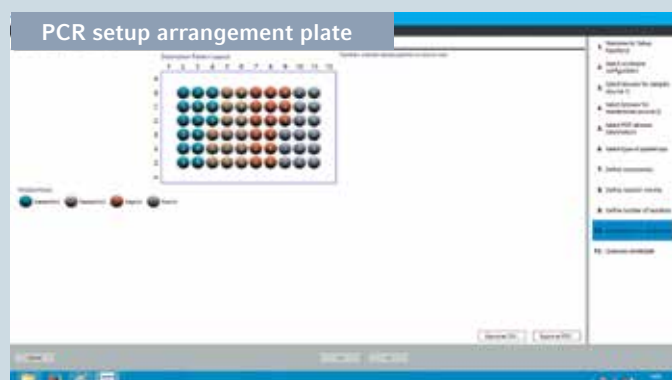
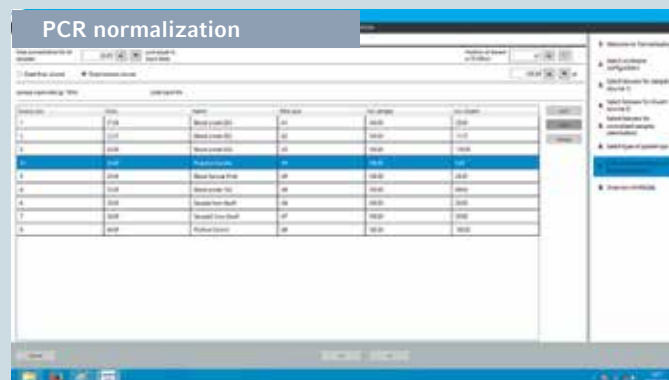
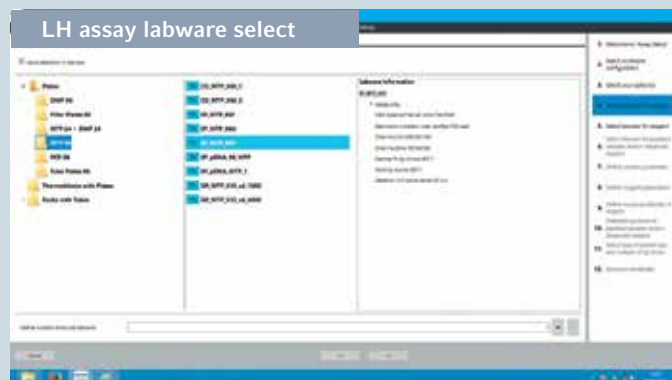
The 4 PCR assistants are designed to streamline and automate the whole PCR set-up workflow:

- > Compose Mastermix
- > Normalize Concentrations
- > Create Dilution Series
- > Setup Reactions

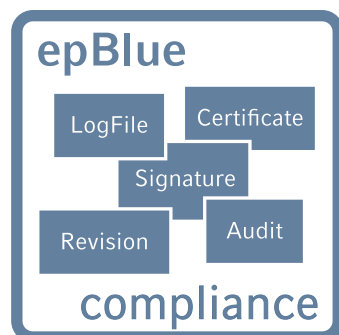
The 3 Prep assistants provide a step-by-step guided workflow of automated nucleic acid purification with the MagSep reagent kits on the epMotion M5073 or 5075m. In short; unscrew caps from reagent tray, select number of samples, select labware for purified DNA/RNA, choose elution volume between 25 to 200 μ L and start run.

The 7 LH assistants facilitate easy access to general liquid handling tasks

- > Reformat
- > Normalization
- > Wash
- > Assay set-up
- > Cherry picking
- > Dilution series
- > Pool samples



Upgrades for the Features You Need



epBlue GxP—Solution for automated pipetting according to 21 CFR part 11 regulations

The GxP solution was developed according to GAMP 5 and tailored for organizational and process requirements of 21 CFR part 11, 58, 211 and 820, GLP, GMP and GCP.

The epBlue GxP solution consists of the epMotion automated pipetting system, software and services that are designed to significantly shorten the timeline of your process validation and qualification.

Eppendorf as a supplier has already taken care of the major part of the regulatory required system validation and qualification. Thus the user can focus on their part of the application validation.

- > Complete electronic documentation
- > User level management and access control
- > Audit trail and log file
- > Revision management
- > Configurable workflow management
- > Export and archiving of digitally signed documents
- > epBlue ID tracking using bar codes (optional extension)

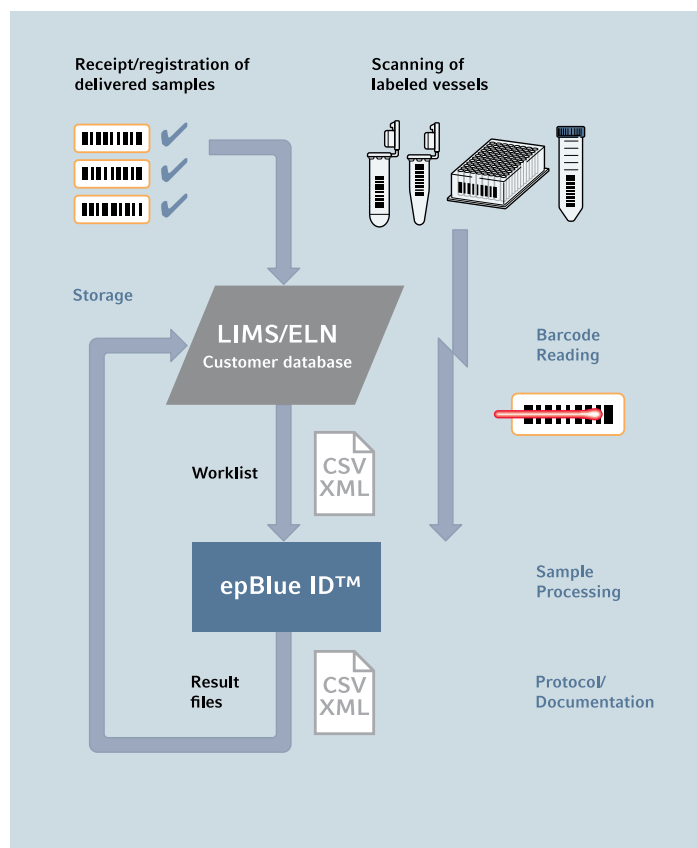


epBlue ID—Secure barcode scanning–tracking–documentation

epBlue ID software module allows for safe data exchange with laboratory information management systems (LIMS) and simplifies external communication. The barcode scanner enables the user to record barcodes on all tube

types and microplates. Reagents can be documented with type and lot number. After manually scanning the barcodes, epBlue ID will store the IDs in its database from which data can be verified at any time. A result file containing sample IDs and their final location is generated by epBlue ID when the liquid handling process is completed. The result ID list can then be exported to a network drive and uploaded to a LIMS.

- > Visual guidance of the scanning process
- > Documentation of reagent type and batch
- > Compatible with LIMS generated worklists





Flexibility with Established Labware Database

The ep*Motion* systems are known as flexible and open automation platforms for liquid handling applications. One part of its great flexibility is the compatibility with various different labware that are needed for specific

customer applications. Tubes, plates, vessels, adapters etc. from various vendors are compatible with the ep*Motion* and our labware database with more than 1,200 files is constantly growing.

Vendor

Show all or select...

Type

Show all or select...

Format

Show all or select...

Search

Please select a vendor, a format or/and a type and press "Search" to show Products! Combinations are also possible.

Search filter for Labware download from epMotion VIP page



epServices
for premium performance

epServices for ep*Motion*— Keep Your Process in Motion

It's all about accuracy and reliability

The ep*Motion* and its dispensing tools are precision instruments. As such, they require regular maintenance, which help prevent failures and keep your processes moving forward. Regular calibration of the dispensing tools will ensure system accuracy, precision and reliability.

Our Performance Plan options will allow you to maintain premium functioning of your ep*Motion* over the life of the system. Eppendorf's highly skilled service technicians perform the adjustments and repairs to return your system to manufacturer specifications.

Less effort, more impact

Our global certification services for ep*Motion* GxP comply with FDA 21 CFR Part 11, EU GMP Annex 11, GLP and GAMP 5 regulations. We provide installation and Operational Qualification (IQ/OQ) services and the accompanying

documentation to assist in the validation process of the instrument and the software. Your employees will receive extensive training and system certification.

epServices include:

- > Cleaning, inspection and system maintenance
- > Eppendorf quality spare parts
- > Software update as needed
- > Instrument adjustments as needed
- > Functional tests with service diagnostic methods
- > Calibration of dispensing tools according to EN ISO 8655
- > Calibration of level sensor, carrier arm, thermal module and vacuum manifold
- > Operational Qualification certification
- > Full documentation and certificates
- > 1-year extended warranty



> Further information: www.eppendorf.com/epServices

Technical Specifications

Surface of systems		96	5070	5073	5075
	Width		39 in/98 cm	39 in/98 cm	56 in/140 cm
	Depth		24 in/62 cm	30 in/75 cm	30 in/75 cm
Dimensions of device			5070	5073	5075
	Width	9 in/22.9 cm	26 in/65 cm	26 in/65 cm	43 in/107 cm
	Depth	18 in/45.7 cm	19 in/48 cm	24 in/61 cm	24 in/61 cm
	Height	21 in/53.3 cm	25 in/63 cm	27 in/67 cm	27 in/67 cm
CleanCap extra	Height		N/A	4 in/10 cm	4 in/10 cm

Weight (without packaging and accessories)					
96	19 kg	42 lb			
5070	45 kg	99.2 lb	5075l	85 kg	187.4 lb
5070 CB	45 kg	99.2 lb	5075t	87 kg	191.8 lb
P5073	50 kg	110 lb	5075v	86 kg	189.6 lb
M5073	57 kg	125.7 lb	5075vt	90 kg	198.4 lb
			5075m	88 kg	194 lb
CleanCap (5073)	5 kg	11 lb			
CleanCap (5075)	10 kg	22.1 lb			

Power supply	96	5070	5073	5075
Voltage	100–240 V ±10 %	100–240 V ±10 %	100–240 V ±10 %	100–240 V ±10 %
Frequency	50–60 Hz ±5 %	50–60 Hz ±5 %	50–60 Hz ±5 %	50–60 Hz ±5 %
Standby		50 W	50 W	50 W
Max output	100 W	80 W	600 W	700 W

Pipetting performance specifications measured according ISO 8655			
Single-channel tool	Volume	Systematic measurement error	Random measurement error
TS 50	50 µL	± 1.2 %	± 0.4 %
	1 µL	± 15 %	± 5 %
TS 300	300 µL	± 0.6 %	± 0.3 %
	20 µL	± 4 %	± 2.5 %
TS 1000	1,000 µL	± 0.7 %	± 0.15 %
	40 µL	± 5 %	± 1.5 %

in pipetting mode, free jet, without pre-wetting, with distilled water, at 20°C

Typical pipetting performance (MVS data for epMotion 5070)*			
Single-channel tool	Volume	Systematic measurement error	Random measurement error
TS 50	50 µL	± 0.6 %	± 0.1 %
	1 µL	± 5.4 %	± 1.6 %
TS 300	300 µL	± 0.7 %	± 0.13 %
	20 µL	± 0.9 %	± 0.2 %
TS 1000	200 µL	± 1.4 %	± 0.1 %
	40 µL	± 0.8 %	± 0.2 %

* Eppendorf application Note 168: »Evaluation of the Eppendorf epMotion Pipetting Tools using the Artel MVS«

Conductor	Systematic measurement error	Random measurement error
X, Y, Z Positioning:	$\pm 0.3 \text{ mm}$	$\pm 0.1 \text{ mm}$
Detector		
Optical confocal infrared detector	contact-free detection of liquid levels, tools used, labware worktables, tip types and quantities	
Optical sensor	liquid surface must be $90 \pm 3^\circ$ to the vertical plane of the optical sensor	
Gripper		
Carrying capacity	1200 g	
Vacuum unit		
Max output	35 Nl/min	
Suction range	0.1–85 kPa	
Suction time	1 sec to 36 min	
ThermoMixer		
Mixing frequency	Off, 300–2000 rpm, optimized for labware and application	
Mixing amplitude	3 mm	
Temperature range	–15°C below RT to 95°C measured in labware at 75 % filling height	
Temperature homogeneity	$\leq 10 \%$ on the block	
Heating rate	5°C/min, on the block	
Cooling rate	3°C/min, on the block, above RT	
Setting range time	5 sec–120 min	
Optional thermal module		
Setting range time	1 min–120 min	
Setting range temperature	0°C–110°C (32°F–230°F)	
CleanCap		
HEPA filter	70–80 m³/h; class E10	
UV light	254 nm (UV-C)	
UV lamp power 1m distance	39 µW/cm²	



	Eppendorf EasyCon tablet	Eppendorf MultiCon PC
Touch screen	yes	yes
Display	10" active matrix TFT LCD	18.5" active matrix TFT LCD
Suitable for use with mouse and keyboard	yes	yes
Ports	4 × USB 2.0	6 × USB 2.0, 1 × Ethernet
Additional power supply needed	no	yes
Network connectivity/remote control	no	yes, via direct Ethernet connection
Enables use of 3D run simulation	no	yes
CSV and XML file exchange	yes	yes
epBlue ID barcode tracking upgradeable	no	yes
epBlue GxP 21 CFR part 11 compliant software upgrade possible	no	yes
Compliant to GAMP 5	no	yes

epMotion Systems

Ordering information

Description	Catalog No.
epMotion 96 , semi-automated electronic pipette for parallel 96 channel microplate processing, (without iPod® controller), 100 – 240 V \pm 10 %/50 – 60 Hz \pm 5 %, 0.5 – 300 μ L	5069000012
iPod touch controller (for use with epMotion 96) , 16 GB, blue	960002580
epMotion 5070 , 100 – 240 V/50 – 60 Hz, incl. EasyCon tablet, epBlue software, LH Assistant, mouse, and waste box	5070007001
epMotion 5070 , 100 – 240 V/50 – 60 Hz, incl. MultiCon PC, epBlue software, LH Assistant, keyboard, mouse and waste box	5070007011
epMotion 5070f , for use inside a cell culture bench or fume hood, 100 – 240 V/50 – 60 Hz, incl. EasyCon tablet, epBlue software, LH Assistant, mouse, and waste box	5070007101
epMotion 5070f , for use inside a cell culture bench or fume hood, 100 – 240 V/50 – 60 Hz, incl. MultiCon PC, epBlue software, LH Assistant, keyboard, mouse and waste box	5070007111
epMotion 5073I , 100 – 240 V/50 – 60 Hz, incl. EasyCon tablet, epBlue software, LH Assistant, mouse and waste box	5073007401
epMotion 5073I , 100 – 240 V/50 – 60 Hz, incl. MultiCon PC, epBlue software, LH Assistant, keyboard, mouse and waste box	5073007411
epMotion 5073I with CleanCap , 100 – 240 V/50 – 60 Hz, incl. EasyCon tablet, epBlue software, LH Assistant, mouse and waste box	5073007501
epMotion 5073I with CleanCap , 100 – 240 V/50 – 60 Hz, incl. MultiCon PC, epBlue software, LH Assistant, keyboard, mouse and waste box	5073007511
epMotion 5073m , with integrated ThermoMixer and MagSep module, 100 – 240 V/50 – 60 Hz, incl. EasyCon tablet, epBlue software, PREP Assistant, mouse and waste box	5073007801
epMotion 5073m , with integrated ThermoMixer and MagSep module, 100 – 240 V/50 – 60 Hz, incl. MultiCon PC, epBlue software, PREP Assistant, keyboard, mouse and waste box	5073007811
epMotion 5073m with CleanCap , with integrated ThermoMixer and MagSep module, 100 – 240 V/50 – 60 Hz, incl. EasyCon tablet, epBlue software, PREP Assistant, mouse and waste box	5073007901
epMotion 5073m with CleanCap , with integrated ThermoMixer and MagSep module, 100 – 240 V/50 – 60 Hz, incl. MultiCon PC, epBlue software, PREP Assistant, keyboard, mouse and waste box	5073007911
epMotion 5073 bundle packages	
epMotion P5073 bundle package , for automatic preparation of PCR reactions, 100 – 240 V/50 – 60 Hz, incl. epMotion 5073I with EasyCon tablet, epBlue software, PCR Assistant, mouse, dispensing tools TS 50 and TS 300, thermoblock PCR 96, rack for 24 x 1.5/2.0 mL tubes and waste box	5073000019
epMotion P5073 bundle package (with CleanCap) , for automatic preparation of PCR reactions, 100 – 240 V/50 – 60 Hz, incl. epMotion 5073m with EasyCon tablet, epBlue software, PCR Assistant, mouse, dispensing tools TS 50 and TS 300, thermoblock PCR 96, rack for 24 x 1.5/2.0 mL tubes and waste box	5073007201
epMotion M5073 bundle package , for automated nucleic acid preparation from 1 -24 samples using Eppendorf MagSep kits, 100 – 240 V/50 – 60 Hz, incl. epMotion 5073m with EasyCon tablet, epBlue software, PREP Assistant, mouse, single-channel dispensing tools TS 50 and TS 1000, MagSep Reagent Rack, PrepRack for 24 x 1.5/2 mL tubes, Rack for 24 x 1.5/2.0 mL tubes, waste box and liquid waste tub	5073000213
epMotion M5073 bundle package (with CleanCap) , for automated nucleic acid preparation from 1 -24 samples using Eppendorf MagSep kits, 100 – 240 V/50 – 60 Hz, incl. epMotion 5073m with EasyCon tablet, epBlue software, PREP Assistant, mouse, single-channel dispensing tools TS 50 and TS 1000, MagSep Reagent Rack, PrepRack for 24 x 1.5/2 mL tubes, Rack for 24 x 1.5/2.0 mL tubes, waste box and liquid waste tub	5073007301
epMotion 5075I , 100 – 240 V/50 – 60 Hz, incl. MultiCon all-in-one PC, epBlue software, LH Assistant, keyboard, mouse and waste box	5075006018
epMotion 5075I with CleanCap , 100 – 240 V/50 – 60 Hz, incl. MultiCon all-in-one PC, epBlue software, LH Assistant, keyboard, mouse and waste box	5075006019
epMotion 5075v , with integrated vacuum system, 100 – 240 V/50 – 60 Hz, incl. MultiCon all-in-one PC, epBlue software, keyboard, mouse, gripper, Vac Frame 2, Vac Frame holder and waste box	5075006020
epMotion 5075v with CleanCap , with integrated vacuum system, 100 – 240 V/50 – 60 Hz, incl. MultiCon all-in-one PC, epBlue software, keyboard, mouse, gripper, Vac Frame 2, Vac Frame holder and waste box	5075006021
epMotion 5075t , with integrated ThermoMixer, 100 – 240 V/50 – 60 Hz, incl. MultiCon all-in-one PC, epBlue software, keyboard, mouse and waste box	5075006022
epMotion 5075t with CleanCap , with integrated ThermoMixer, 100 – 240 V/50 – 60 Hz, incl. MultiCon all-in-one PC, epBlue software, keyboard, mouse and waste box	5075006023
epMotion 5075vt , with integrated vacuum system and ThermoMixer, 100 – 240 V/50 – 60 Hz, incl. MultiCon all-in-one PC, epBlue software, keyboard, mouse, gripper, Vac Frame 2, Vac Frame holder and waste box	5075006035

epMotion Systems

Ordering information

Description	Catalog No.
epMotion 5075vt with CleanCap , with integrated vacuum system and ThermoMixer, 100 – 240 V/50 – 60 Hz, incl. MultiCon all-in-one PC, epBlue software, keyboard, mouse, gripper, Vac Frame 2, Vac Frame holder and waste box	5075006034
epMotion 5075m , with integrated ThermoMixer and MagSep module, 100 – 240 V/50 – 60 Hz, incl. MultiCon all-in-one PC, epBlue software, PREP Assistant, PCR Assistant, keyboard, mouse and waste box	5075006024
epMotion 5075m with CleanCap , with integrated ThermoMixer and MagSep module, 100 – 240 V/50 – 60 Hz, incl. MultiCon all-in-one PC, epBlue software, PREP Assistant, PCR Assistant, keyboard, mouse and waste box	5075006025

epMotion Upgrade Kits

Ordering information

Description	Catalog No.
Thermal Module upgrade option , thermal module for heating or cooling thermoadapters, thermoblock and thermoracks. Requires installation by an Eppendorf service technician, extra cost applies.	960002181
ThermoMixer upgrade option (for units SN>4000), for heating, cooling and mixing of tubes and plates. Additional deck extension plate might be required. Requires installation by an Eppendorf service technician, extra cost applies.	5075000630
ThermoMixer upgrade option (for units SN<4000), for heating, cooling and mixing of tubes and plates. Additional deck extension plate might be required. Requires installation by an Eppendorf service technician, extra cost applies.	960021055
Vacuum Module upgrade option , for automated processing of filter plates. Additional deck extension plate might be required. Requires installation by an Eppendorf service technician, extra cost applies.	960021011
MultiCon PC upgrade kit , for upgrading epMotion 5070 and 5073 EasyCon versions to a MultiCon PC. Includes MultiCon PC with preinstalled epBlue software, PREP Assistant, and PCR Assistant.	5075000725
Software & Hardware upgrade kit , for upgrading an epMotion 5075 with serial number 1,000 - 4,000 to the revision of an epMotion SN >4,000. Additional deck extension plate might be required. Requires installation by an Eppendorf service technician (901513510), extra cost applies.	5075000709
Deck extension plate 5075l, for units SN>4000	5075000641
Deck extension plate 5075t, for units SN>4000	5075000642
Deck extension plate 5075 TMX, for units SN<4000	960021066
Deck extension plate 5075v and 5075 VAC	5075000643
Deck extension plate 5075vt and 5075 VACTMX	5075000640

epMotion Consumables

Ordering information	
Description	Catalog No.
epT.I.P.S. Motion, non-filter	
Eppendorf Quality™, 50 µL, 960 tips (10 racks x 96 tips)	0030014405
Eppendorf Quality, 300 µL, 960 tips (10 racks x 96 tips)	0030014448
Eppendorf Quality, 1,000 µL, 960 tips (10 racks x 96 tips)	0030014480
Sterile, 50 µL, 960 tips (10 racks x 96 tips)	0030015207
Sterile, 300 µL, 960 tips (10 racks x 96 tips)	0030015223
Sterile, 1,000 µL, 960 tips (10 racks x 96 tips)	0030015240
epT.I.P.S. Motion, with filter	
PCR clean, 50 µL, 960 tips (10 racks x 96 tips)	0030014413
PCR clean, 300 µL, 960 tips (10 racks x 96 tips)	0030014456
PCR clean, 1,000 µL, 960 tips (10 racks x 96 tips)	0030014499
PCR clean and sterile, 50 µL, 960 tips (10 racks x 96 tips)	0030015215
PCR clean and sterile, 300 µL, 960 tips (10 racks x 96 tips)	0030015231
PCR clean and sterile, 1,000 µL, 960 tips (10 racks x 96 tips)	0030015258
epT.I.P.S. Motion SafeRack (optimized for reuse tip function)	
Eppendorf Quality, 50 µL, 960 tips (10 racks x 96 tips)	0030014600
Eppendorf Quality, 300 µL, 960 tips (10 racks x 96 tips)	0030014626
Eppendorf Quality, 1,000 µL, 960 tips (10 racks x 96 tips)	0030014642
epT.I.P.S. Motion SafeRack, with filter (optimized for reuse tip function)	
PCR clean, 50 µL, 960 tips (10 racks x 96 tips)	0030014618
PCR clean, 300 µL, 960 tips (10 racks x 96 tips)	0030014634
PCR clean, 1,000 µL, 960 tips (10 racks x 96 tips)	0030014650
epT.I.P.S. Motion as reload system	
Eppendorf Quality, 50 µL, 2,304 tips (24 trays x 96 tips)	0030014421
Eppendorf Quality, 300 µL, 2,304 tips (24 trays x 96 tips)	0030014464
Eppendorf Quality, 1,000 µL, 2,304 tips (24 trays x 96 tips)	0030014502
epT.I.P.S. Motion as reload system, with filter	
PCR clean, 50 µL, 2,304 tips (24 trays x 96 tips)	0030014430
PCR clean, 300 µL, 2,304 tips (24 trays x 96 tips)	0030014472
PCR clean, 1,000 µL, 2,304 tips (24 trays x 96 tips)	0030014510
PCR clean and sterile, 50 µL, 2304 tips (24 trays x 96 tips)	0030014529
PCR clean and sterile, 300 µL, 2304 tips (24 trays x 96 tips)	0030014537
TipHolder, for epT.I.P.S. Motion Reloads	5075751399
Reservoir 30 mL , large-volume container for reagent presentation on the epMotion, can only be inserted with the Reservoir Rack; production batch testing, certified 30 mL, 10 x 5 reservoirs in the bag, PCR clean, polypropylene	960051009
Reservoir 100 mL , large-volume container for reagent presentation on the epMotion, can only be inserted with the Reservoir Rack; production batch testing, certified 100 mL, 10 x 5 reservoirs in the bag, PCR clean, polypropylene	960051017
Reservoir 400 mL , large-volume container in SBS format for reagent presentation on the epMotion; production batch testing, certified 400 mL, 10 reservoirs, autoclavable, polypropylene	5075751364
Eppendorf MagSep reagent kits for nucleic acid purification	
MagSep Tissue gDNA Kit , reagent kit for genomic DNA purification of 4 x 24 samples from cells and tissues	0030450000
MagSep Blood gDNA Kit , reagent kit for genomic DNA purification of 4 x 24 samples from blood	0030451007
MagSep Viral DNA/RNA Kit , reagent kit for viral DNA/RNA purification of 4 x 24 samples	0030452003

epMotion Tools and Accessories

Ordering information	
Description	Catalog No.
Dispensing Tools	
TS 50 single-channel dispensing tool , 1–50 µL volume range	960001010
TS 300 single-channel dispensing tool , 20–300 µL volume range	960001028
TS 1000 single-channel dispensing tool , 40–1,000 µL volume range	960001036
TM 50-8 eight-channel dispensing tool , 1–50 µL volume range	960001044
TM 300-8 eight-channel dispensing tool , 20–300 µL volume range	960001052
TM 1000-8 eight-channel dispensing tool , 40–1,000 µL volume range	960001061
Holder for 6 dispensing tools	960001109
epMotion Gripper	
Gripper , incl. holder, for transporting plates on the worktable and automatic operation of the vacuum manifold	960002270
Holder for gripper	960002211
Waste solutions	
Waste container with lid , for holding used pipette tips	960002016
Liquid Waste Tub , incl. lid, with working volume of 175 mL for mounting in waste box for use with 5073 and 5075	5075751500
Accessories for use with vacuum module (VAC)	
Vacuum lid	960002245
Mat for vacuum lid	960002407
Vac Frame 1	960002253
Vac Frame 2	960002261
Vac Frame holder	960002237
Elution plate adapter, for processing micro tubes in racks	960002531
Elution plate adapter, type for VAC station	960002571
Anticontamination plate adapter, for vacuum processes with foaming solutions in multiwell plates	960002540
Vac Thermo lid	960002551
Collection Plate adapter for M&N kits	960002571
Reservoir Rack 7-positions , holds up to 7 reservoirs (30 mL and 100 mL) or Reservoir Rack TC modules	960002148
Reservoir Rack 3-positions , holds up to 3 reservoirs (30 mL and 100 mL) or Reservoir Rack TC modules. For use on half-position deck position with 5075m and 5075t.	5075754070
Reservoir Rack Temperature Control (TC) Modules , for use in epMotion Reservoir Rack	
for 8 x PCR tubes 0.2 mL	960002601
for 4 x Eppendorf Safe-Lock tubes 1.5/2.0 mL, incl. 0.5 mL tube sleeves	5075799081
for 4 x Eppendorf Tubes 5.0 mL	5075799340
for 4 x reaction vessels Ø 12 mm	960002630
for 4 x reaction vessels Ø 16 mm	960002640
for 4 x reaction vessels Ø 17 mm (e.g. 15 mL conical)	960002650
for 2 x reaction vessels Ø 29 mm (e.g. 50 mL conical)	960002660
for 1 x reservoir 30 mL	960002670
for 1 x reservoir 100 mL	960002680
Adapter sleeves , to retrofit the 1.5/2.0 mL thermoracks for use with 0.5 mL vessels	
1 set of 25 pieces	960002172

epMotion Accessories

Ordering information

Description	Catalog No.
Racks for single test tubes , no temperature control	
for 24 x Eppendorf Safe-Lock tubes 1.5/2.0 mL	5075751275
for 24 x Eppendorf Safe-Lock tubes 1.5/2.0 mL, incl. 0.5 mL tube sleeves	5075751453
for 96 x 1.5/2.0 mL screw cap tubes (requires 2 deck positions)	960002318
for 24 x tubes Ø 12 mm; H24 mm (e.g., HPLC vials)	960002380
for 24 x tubes Ø 12 mm; H45 mm	960002351
for 24 x tubes Ø 12 mm; H63 mm	960002059
for 24 x tubes Ø 13 mm; H45 mm	960002342
for 24 x tubes Ø 13 mm; H63 mm	960002041
for 24 x tubes Ø 14 mm; H45 mm	960002334
for 24 x tubes Ø 14 mm; H63 mm	960002369
for 24 x tubes Ø 15 mm; H45 mm	960002326
for 24 x tubes Ø 15 mm; H63 mm	960002377
for 24 x tubes Ø 16 mm; H45 mm	960002164
for 24 x tubes Ø 16 mm; H63 mm	960002032
for 24 x tubes Ø 17 mm; H45 mm	960002156
for 24 x tubes Ø 17 mm; H63 mm (e.g., 15 mL conical tubes)	960002024
Rack Smart, for 1 x SmartCycler reaction tube rack	960002520
Rack LC, for 96 x 20 µL or 100 µL LightCycler capillaries. Also suitable for use with Centrifuge 5804/5804 R or 5810/5810 R, set of 2.	960002511
PrepRack, for 24 x Eppendorf Safe-Lock tubes 1.5/2.0 mL, for magnetic separation in 1.5/2.0 mL tubes using the MagSep module of epMotion 5073m/M5073 or 5075m	5073751006
ReagentRack to hold the reagent tray, for MagSep reagent kits	5075751429
Thermorack (Thermoblock) , for temperature control of plates and tubes, plates and tubes can be transported together with the thermorack	
for 1 x PCR plate, 96-well, or 96 x 0.2 mL PCR tubes	960002083
for 1 x PCR plate, 96-well, with orientation control and 2 clamps for safe mixing and piercing of semi-skirted plates	5075751666
for 1 x PCR plate, 384-well	960002091
for 24 x Eppendorf Safe-Lock tubes, 1.5/2.0 mL	960002075
for 24 x Eppendorf Safe-Lock tubes, 1.5/2.0 mL, incl. 0.5 mL tube sleeves	960002067
for 24 x Eppendorf Safe-Lock tubes, 1.5/2.0 mL (TMX version)	960002080
for 24 x Eppendorf Safe-Lock tubes, 1.5/2.0 mL, incl. 0.5 mL tube sleeves (TMX version)	960002070
for 24 x Cryotubes Ø 12.5 mm	960002491
for 384 x Corbett 0.1 mL strip-tubes	960002500
for 1 x 72- or 100-tube Qiagen Rotor-Gene Rotor-Disc and 20 x 1.5/2.0 mL tubes (requires 2 deck positions)	5075751526
Lid cover with holder for Qiagen Rotor-Gene adapter	5075751640
Thermoadapter , for temperature control of plates, plates can be removed by the gripper	
for 1 x PCR plate, 96-well	960002199
for 1 x PCR plate, 384-well	960002202
for 1 x Microplate 96 (U or V bottom)	5075751577
for 1 x DWP 96/1000, for Eppendorf Deepwell Plates 96/1,000 µL	960002391
for 1 x DWP 96/2000, for Deepwell Plates 96/2,000 µL	5075751330
for 1 x MagNA Pure LC sample cartridge	5075751305
Thermoadapter Frosty , combination of height adapter and PCR-Cooler, for cooling 1 x PCR plate, 96-well, skirted	960002300

epMotion Accessories

Ordering information

Description	Catalog No.
Height adapter , for leveling labware, enables faster plate processing	
40 mm, 1 pc.	960002121
55 mm, 1 pc.	960002113
85 mm, 1 pc.	960002105
Eppendorf Magnum EX Magnet , for magnetic bead separation in 96 well plates	960066123
Eppendorf Magnum FLX Magnet , for magnetic bead separation in 96 well plates	960066124

epMotion Software

Ordering information

Description	Catalog No.
epBlue ID barcode and tracking software incl. manual barcode scanner , modular expansion of epBlue for barcode support. Incl. manual barcode reader with stand. Compatible with epBlue version 40.1 and higher	5075002701
epBlue ID software and hardware modification kit , for 5070 and 5075 PC versions, barcode support includes software, barcode reader and stand, compatible with all epMotion PC versions except epMotion 5075 MC PC version, not compatible with the epMotion control panel versions	5075000830
epBlue GxP software , for use in regulated process environments (according to GLP, GMP, 21 CFR), as configuration option or for pre-installed epMotion MultiCon versions with epBlue version 40.1 or higher, with epBlue GxP software, corresponding firmware, certificates	5075002728
epBlue GxP software modification kit , for use in regulated process environments (according to GLP, GMP, 21 CFR), for pre-installed epMotion PC versions, with epBlue GxP software, corresponding firmware, USB hardware key, certificates. Requires 627B version of integrated PC.	5075000849
epMotion Editor , epMotion Editor 40, software CD ROM with instructions, used to create, edit and simulate application on a PC, compatible with epBlue version >40.x	5075014220
epMotion Editor , incl. editor key, for creating and editing applications, runs on the PC, compatible with epBlue 10.x versions, complete software package	960000269
epMotion Editor , incl. editor key, for creating and editing applications, runs on the PC, compatible with epBlue 10.x versions, additional user license	960000300
LH Assistant software license , provides step-by-step programming guidance to set up for general liquid handling tasks like Reformatting, Assay set up, Dilution series, Normalization, Cherry picking, Pool samples and Wash	5075002507
PCR Assistant software license , designed to streamline and automate the whole PCR set up workflow. Facilitates easy method set up for PCR steps like Compose MasterMix, Normalize Concentrations, Create Dilution Series and Setup PCR Reactions	5075002515
PREP Assistant software license , provides step-by-step programming guidance to set up nucleic acid purification protocols for the Eppendorf MagSep reagent kits	5075002523

Eppendorf North America, Inc.
Phone: 800-645-3050
Email: info@eppendorf.com
Eppendorf Canada Ltd.
Phone: 800-263-8715
Email: canada@eppendorf.com

www.eppendorf.com/automation

Only for epMotion M5073, 5073m and 5075m: Limited Use Label License

Notice to purchaser; limited license for research use only This product and its use may be covered by one or more patents owned by Gen-Probe Incorporated. The purchase price for this product includes only limited, nontransferable rights under certain claims of certain patents owned by Gen-Probe Incorporated to use this product for research purposes only. No other rights are conveyed. Purchaser is not granted any rights under patents of Gen-Probe Incorporated to use this product for any commercial use. Further information regarding purchasing a license under patents of Gen-Probe Incorporated to use this product for any other purposes, including, without limitation, for commercial use, may be obtained by contacting Gen-Probe Incorporated, Attn: Business Development Department, 10210 Genetic Center Drive, San Diego, California 92121-4362, U.S.A.

031.C1.0141.C.US.16 © 2016 Eppendorf AG. Eppendorf®, the Eppendorf logo, Eppendorf Tubes®, epMotion®, epT.I.P.S.® and ThermoMixer® are registered trademarks of Eppendorf AG. epBlue™, Eppendorf EasyCon™, Eppendorf MultiCon™, Eppendorf Quality™, Eppendorf MagSep™ and epServices Logo™ are a trademark of Eppendorf AG. Corbett® and Rotor-Gene® are registered trademarks of Corbett Research Pty Ltd. Cryotubes® is a registered trademark of Vangard International, Inc. iPod® is a registered trademark of Apple Inc. LightCycler® and MagNA Pure® are registered trademarks of Roche Diagnostics GMBH. MV5® is a registered trademark of MaeLean-Fogg Company. QIAGEN® and Rotor-Disc® are registered trademarks of QIAGEN GmbH. SmartCycler® is a registered trademark of Cepheid Corporation. Product appearance, specifications, and/or prices are subject to change without notice.