



Coated Microplates & Tissue Culture C Ware for High-Throughput Screening, Imaging, High-Content Analysis, Large Scale Cell Culture & Assay Applications

BioMedTech Laboratories Inc., the technology leader for high-quality surface coatings, offers all customers a full spectrum of cell culture coating and assay coating options on a wide variety of surfaces. Prepared by BioMedTech under stringent manufacturing practices in our facility designed for and dedicated to coating, BioMedTech products meet rigid quality control specifications.

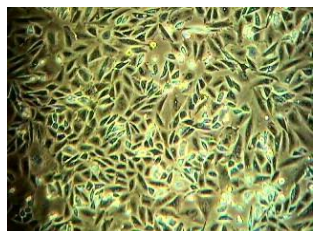
We proudly offer all our customers:

- A Complete Selection of Cell-Culture and Assay surface coating options
- Coatings on Glass or Plastic, Including Glass-Bottom and COC/COP Microplates
- All Well Densities (including 1536-Well) and Formats
- Adaptation to Specific Cell Lines and Primary Cells
- Collaborative Problem Solving and Development
- Responsiveness to Special Requests

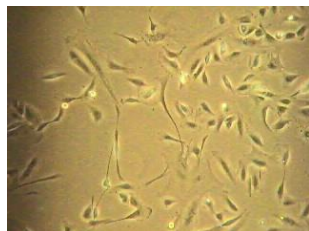
CELL CULTURE APPLICATIONS

Coatings BioMedTech applies for TC & Cell Culture applications include the following and more:

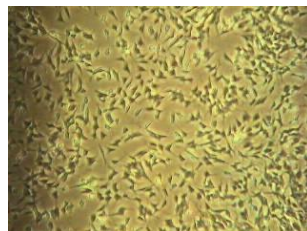
- | | | |
|------------------------|--|--------------------------------|
| Collagen Type I | NEW PDL/Laminin <i>Double Coat</i> | EvaluPlate™ MULTICOAT Tool |
| Fibronectin | NEW PLO/Laminin <i>Double Coat</i> | Gelatin |
| NEW Vitronectin | NEW Synthetic Amine | Bovine & Human Collagen Type I |
| Laminin | Poly-D-Lysine (PDL) | Poly-Ornithine (PLO) |
| BME & Matrigel® | NEW bioSphere surface for spheroid formation in 384-Well & 1536-Well Plates | |



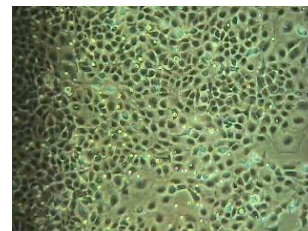
BHK-21



THLE-3



SH-SY5Y



HEK-293

ASSAY, SCREENING, ELISA & HTS APPLICATIONS

Coatings BioMedTech applies for Assay & Screening applications include the following and more:

- | | | |
|--------------|----------------------------|----------------------------------|
| Streptavidin | Protein G | Anti-GST |
| Antibodies | Monoclonals | Anti-Epitope-Tag |
| Protein A | Biotin | Anti-His-Tag |
| Avidin | In-House Antibodies | Low Non-Specific Binding Surface |
| | | and More |

MICROPLATES, TC-LABWARE & VESSEL OPTIONS

BioMedTech coats all formats of microplates, multiwell plates, flasks, inserts, dishes, roller bottles and slides:

MICROPLATES

- 1536-Well Plates
- 384-Well Plates
- 96-Well Plates
- Half-Area Plates
- Glass-Bottom Plates
- Low-Volume Plates
- Strip-Well Plates

MULTIWELL PLATES & DISHES

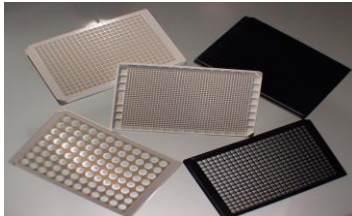
- 48-Well Plates
- 24-Well Plates
- 12-Well Plates
- 6-Well Plates
- 100 mm Dishes
- 65 mm Dishes
- 35 mm Dishes

FLASKS

- Multi-Layer Flasks
- Robotic-Use Flasks
- T-175 Flasks
- T-75 Flasks
- T-25 Flasks
- Expanded Surface
- BioProduction Vessels

OTHER FORMATS

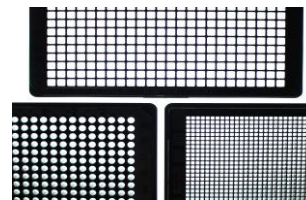
- Roller Bottles
- Culture Inserts
- Custom Formats
- and More



NEW MICROPLATE AND TC-WARE FORMATS AND PLATFORMS

BioMedTech has the capabilities to apply coatings to advanced and novel formats:

Glass-Bottom Plates	Robotic Friendly Flasks
Low- / Small-Volume Plates	Expanded Surface Flasks
Low- / Reduced-Height Plates	Multi-Layer Flasks
Half-Area Plates	Membrane & Filter Plates
Expanded Surface Roller Bottles	Custom and More.....



STANDARD, PROBLEMATIC & NOVEL SURFACES COATED

BioMedTech is able to immobilize coatings on a variety of surfaces including:

Polystyrene	Glass (Including glass-bottom plates)
Cyclo-Olefins (COC/COP)	Polypropylene & More

BLOCKING AND INCUBATION BUFFERS FOR OPTIMAL SIGNAL TO NOISE RATIO

BioMedTech offers a line of high-performance blocking and incubation buffers for HTS and Immunoassays featuring:

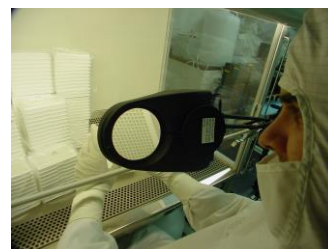
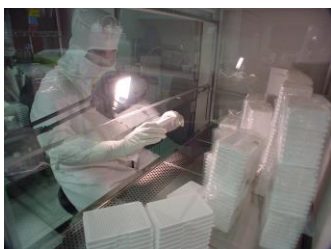
- Biotin-free, ultra-pure and sterile-filtered. DNase, RNase and protease-free
- High efficiency for ELISA, HTS, receptor and cell-based assays
- Customized for protein micro-arrays, DNA-assays, biochips and micro-fluidics
- Ideally suited for maximum sensitivity of assays on nylon, PVDF and nitrocellulose membranes

INDUSTRY-LEADING PACKAGING FOR GUARANTEED STABILITY AND LONG SHELF-LIFE

Vacuum sealing in foil barrier bags with molecular-sieve moisture and oxygen absorbers

EXTENSIVE QUALITY CONTROL OF COATED MICROPLATES

- Low C.V. assured via proprietary methods to measure coating uniformity and efficiency
- Cell culture testing for attachment, growth and resistance against washing procedures



OPTIMIZATION AND CUSTOM COATING FOR PROBLEMATIC CELL LINES AND PRIMARY CELL TYPES

BioMedTech custom designs complex extra-cellular matrices comprised of networked collagen types, fibronectin, proteoglycans and basement-membrane materials. Performance is optimized for high-throughput screening using cells from our panel of cell lines and primary cell types.

OPTIMIZATION AND CUSTOM COATING FOR HTS AND IMMUNOASSAYS

For the design phase and trouble-shooting during development of sensitive assays, BioMedTech offers its customers its expertise in a wide variety of surface technologies to develop optimized microplate coatings with high signal to noise performance.

EVALUATION SAMPLES PROVIDED ON REQUEST

Please contact us to place an order, discuss your application, and to request evaluation samples. We appreciate your business and look forward to working with you.

Peter LaGattuta, Business Development

Direct: 239.384.9138 Cell: 239.269.3262
peter.biomedtech@comcast.net

Joachim Sasse, Ph.D., President

biomedtech@verizon.net

BioMedTech Laboratories, Inc.

3802 Spectrum Blvd, Suite 154
Tampa, FL 33612, U.S.A.
813.985.7180 Fax: 813.558.2000
www.biomedtech.com