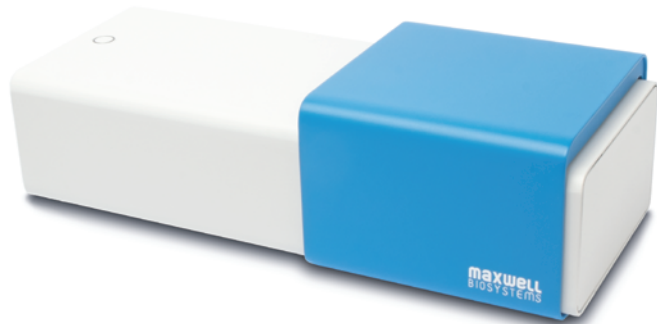


MaxTwo

High-Throughput, High-Resolution
Functional Imaging



MaxTwo Mainframe



MaxTwo Multi-Well Plate



Mainframe and Data Transfer

One-button interface	Open / close chamber
Full culture automation	Compatible
Status indicator	LED
Data connection	Gigabit Ethernet
Small outline	40 × 16 × 12 cm ³

Recording and Stimulation Channels Per Well

Programmable gain	up to 78 dB
No. of recording channels	1,024
Sampling rate	20 kHz / electrode
Resolution	10 bit
No. of stim. buffers	32
Stimulation modes	Voltage & Current

Built-in Incubator

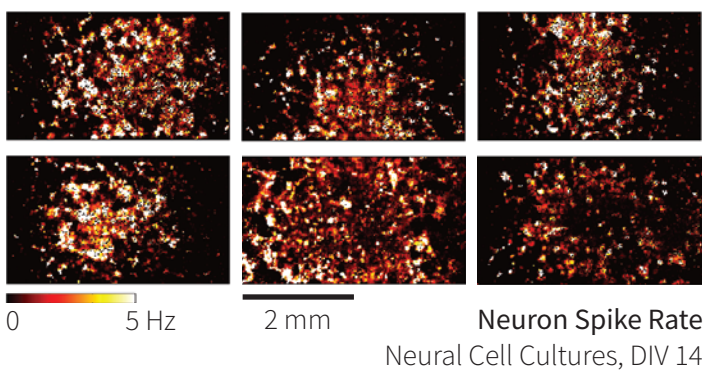
Controllable temperature	Ambient + 5°C ~ 60°C
Temp. accuracy	Within 0.1°C
CO ₂ control	Yes
Input gas pressure	0.1-0.15 MPa
Humidified	Yes

Microelectrodes and Sensor Area

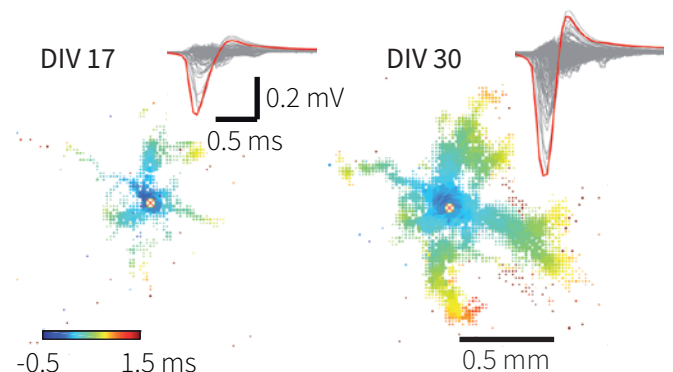
Total no. of electrodes	26,400
El. center-to-center dist.	17.5 μm
Electrode type	Platinum
Electrode size	11.5 × 9.5 μm ²
Active sensing area	3.85 × 2.10 mm ²

Assays

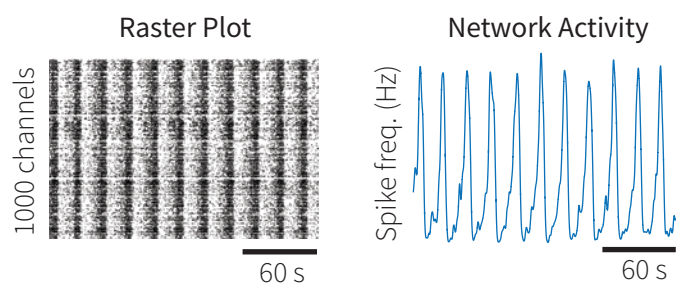
Whole Sample Electrical Imaging



Axonal Conduction Velocity Tracking



Connectivity and Synchronicity Extraction



MaxWell Biosystems AG

@mxwbio Switzerland

Disclaimer

The contents of this document are provided by MaxWell Biosystems (MxW), 'as is'. MxW makes no representations nor warranties with respect to the accuracy or completeness of the contents of this publication and reserves the right to make changes to the specification at any time without notice. All trademarks are the property of their respective owners.