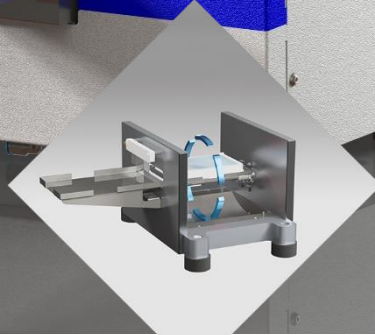
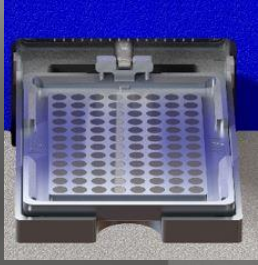




# BlueWasher

BLUE CAT BIO

The most cost-effective tool to improve data quality (z') for cellular assays



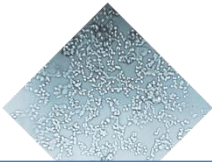
**Magnetic carrier for non-contact bead wash**

**Centrifugation instead of aspiration**

**Cell-friendly dispensing for 96, 384 & 1536w plates**

The award-winning BlueWasher uses centrifugation instead of aspiration to remove liquids from all plate formats, including 1536w, eliminating background and variability at their (assay) sources. Highly reproducible residual volumes 10x lower than tip-based plate washers enable imagers to produce cleaner images, **raising z' 0.1-0.3 for typical adherent cellular assays**. Higher z' = miss fewer active compounds AND reduce false positives to re-screen. **BlueWasher** immediately improves screening economics without complex assay or automation changes, delivering unparalleled ROI and direct boost to overall drug discovery productivity. Now with gravity drain, eliminating waste pump & filters.

## Cellular Assays



**Non-contact media change for HTS, HCS, FLIPR®, genomic assays**

### Better Data

- Z' lift typical 0.1-0.3
- Better %CV
- 10x less residual vs. tip-based washer -> less background noise
- No contact, no "donuts"

### Simpler Assay Design

- ~0.2µl residual allows direct addition of compound, stain, Ab
- Fewer wash steps
- Simpler assay automation
- Simpler transition to 1536

### More Reliable Screens

- No clogged needles
- No re-calibration
- Constant residual volume

### Fast, Compact, Quiet

- < 20 sec to evacuate any plate, incl. 1536w
- 40 cm x 70cm footprint
- No compressed air or vacuum

## Magnetic Bead Wash



**Contamination-free bead wash without disposable tips for DNA extraction, mRNA purification, expression**

### High Throughput

- Evacuates any plate < 20sec
- Frees up automated liquid handler
- Easy to automate and integrate

### Saves Cost

- Tipless evacuation eliminates consumable waste

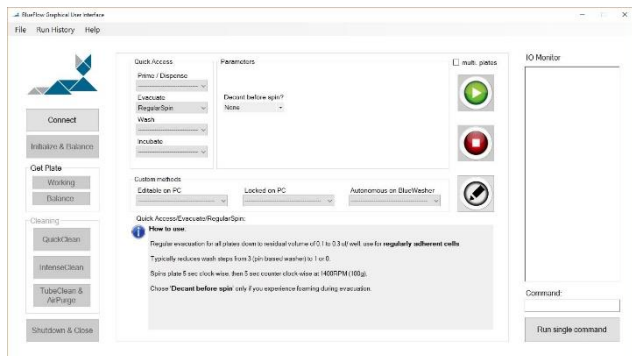
### Better Data

- Lower background and variability due to consistent and complete buffer removal

# BlueWasher: standalone - benchtop automated – HTS integrated

## Intuitive Graphical User Interface

- Quick access to all BlueWasher functions
- Single-click cleaning for effective contamination control
- Workflow editor for simple programming of complex workflows



## BlueBench

- Compact, user friendly and modular benchtop automation for BlueWasher and other stand-alone instruments



## Easy to integrate & automate with third party high-throughput systems

- Open, well documented API
- Easy plate pick-up by simple gripper
- BlueWasher autonomous mode minimizes remote control complexity
- Gravity waste drain – no pump, no filters
- Integrations: Agilent, Beckman Coulter, BioNex, BioSero, Hamilton, HighResBio, ThermoFisher

## Options and accessories



Magnetic carriers for 96, 384, 1536w plates for magnetic bead applications



Dispense from up to 7 liquid inputs



BlueDaily cleaning solution



BlueIntense cleaning solution

Download literature and CAD files at: [www.bluecatbio.com/downloads](http://www.bluecatbio.com/downloads)



**12/2016 Journal of Biomolecular Screening paper by S. Knight (AstraZeneca) et. al.: Enabling 1536-Well High-Throughput Cell-Based Screening through the Application of Novel Centrifugal Plate Washing.**

“... In this study, we describe the **novel application of a centrifugal plate washer** to facilitate miniaturization of a range of 1536-well cell assays and techniques to reduce edge effects, all of which improved throughput and data quality. Cell assays currently limited in throughput because of cost and complex protocols may be enabled by the techniques presented in this study.”

BlueCatBio Europe

Horningsreuth 22a  
D-95512 Neudrossenfeld  
E-Mail: [info@bluecatbio.de](mailto:info@bluecatbio.de)

BlueCatBio North America

Concord, MA  
Tel: +1 978 405-2533  
E-Mail: [info@bluecatbio.com](mailto:info@bluecatbio.com)

[www.bluecatbio.com](http://www.bluecatbio.com)



BLUE CAT BIO

# Unprecedented control of plate evacuation

From emulating manual decanting to evacuating plates down to 1,000x less residual volume than aspiration-based washers, BlueWasher offers evacuation algorithms for a wide range of applications with single-click access from the “Evacuate” Menu on the graphical user interface.

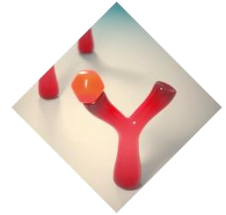
Evacuate



## Application-specific evacuation algorithms

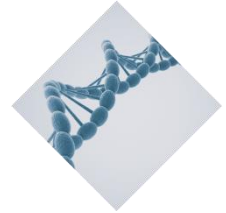
### HardDecant

- Emulates manual decanting – reproducibly & automated
- For low affinity ELISA



### MagBeadSpin

- Emulates manual tapping – reproducibly & automated
- For magnetic bead applications

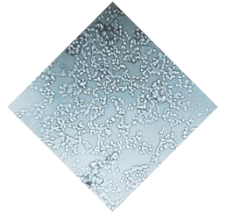


### GentleSpin

### LightSpin

### RegularSpin

- 2-4x dryer than manual tapping
- For contact-free media change in adherent cellular assays

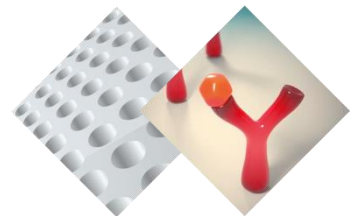


### StrongSpin

### ExtraSpin

### SuperSpin

- 10-1,000x dryer than manual tapping
- For automated & complete slide drying for array imaging, “no wait”
- For complete ELISA background removal



BlueCatBio Europe

Hornungsreuth 22a  
D-95512 Neudrossenfeld  
E-Mail: info@bluecatbio.de

BlueCatBio North America

Concord, MA  
Tel: +1 978 405-2533  
E-Mail: info@bluecatbio.com

[www.bluecatbio.com](http://www.bluecatbio.com)



BLUE CAT BIO

# BlueWasher specifications

<b>Applications</b>	<b>Contactless</b> media change & liquid evacuation with <b>near zero, reproducible residual volume</b> <b>Magnetic bead washes</b> with magnetic carrier for 96, 384, 1536 well MTPs
<b>Compatibility</b>	Any SBS format plate up to 17.4mm height (including 1536 well) strip or slides, custom formats programmable; dispensing into 96 and 384 well plates; 1536 well MTP option
<b>Centrifuge system</b>	Liquid evacuation by centrifugation; plates positioned in symmetric rotor with well openings facing outwards to expel liquids. Rotor driven by computer controlled, high power servo motor
<b>Residual volume</b>	0.01µl to 5µl per well, depending on application-specific evacuation method selected
<b>Shaking &amp; incubation</b>	Programmable speeds, rocking angles and time, ideal to break up liquid layers
<b>Centrifuge specs</b>	<b>RPM:</b> 5 to 3,500 RPM (= 630 g), <b>Acceleration:</b> <1,500 RPM/s, <b>Deceleration:</b> < 1,000 RPM/s <b>Maximum weight difference</b> between active plate and balance plate in dry condition: 15 g @ 3,500 rpm, 20 g @ 2,000 rpm, 35 g @ 1,500 rpm, 70 g @ 1,000 rpm
<b>Dispense system</b>	Precision membrane pump and electromechanical valves controlled by on-board Linux CPU
<b>Liquid inputs</b>	Choice of 4 or 7 liquid inputs with Luer lock fittings
<b>Specifications</b> (all volumes per well)	<b>Manifold:</b> 8, 16, or 32 needles (for 96/384/1536 well MTP) <b>Dispense jet position:</b> Slanted dispenser mount to aim at well walls, plate off-set adjustable <b>Dispense pressure:</b> adjustable in 5 steps, from approx. 35% to full pressure <b>Dispense speeds:</b> 96w MTP: 7 sec @ 100µl; 384w MTP: 13 sec @ 50µl; 1536w MTP: 13 sec @ 8µl <b>Range &amp; accuracy:</b> 96 and 384 MTP: >5µl, < 3%CV @ 100µl; 1536 MTP: >3µl, < 5%CV @ 10µl
<b>Internal dead volume</b>	8 ml (input connector to dispenser pin tips)
<b>Tubes</b>	<b>Reagent tubes:</b> length: 1m, Ø outside: 5mm, Ø inside: 3mm; Luer locks on both ends connect BlueWasher input to Luer lock on GL-45 cap for reagent bottle, color-coded
<b>Software and operation</b>	<b>PC-based GUI</b> with quick access to pre-set, application specific evacuation methods and <b>editor</b> to customize methods and program workflows. <b>Autonomous mode</b> to run methods from BlueWasher's internal memory
<b>Automation</b>	Easy plate load/ pick-up by simple robotic gripper; standard API, USB and Ethernet Available automated plate loading via <b>BlueBench</b> ; choice of plate storage in up to 5 stacks or random access hotels with auto de-lidding/ re-lidding
<b>Safety</b>	Centrifugation shut off in case of excessive vibration; sensor controlled interlocking door
<b>Cleaning &amp; decontamination</b>	Single touch <b>QuickClean</b> and <b>IntenseClean</b> protocols with custom <b>BlueDaily</b> and <b>BlueIntense</b> cleaning solutions highly effective to clean and decontaminate BlueWasher interior
<b>Dimensions (HxWxD)</b>	20.5 cm x 36.5 cm x 69.0 cm   8.1" x 14.4" x 27.2" (without plate nest: 54.5 cm   21.5"); electrical and liquid connections on left side wall of BlueWasher housing
<b>Weight</b>	27 kg   60 lbs
<b>Power requirements</b>	100 – 240 V, 50/60 Hz, 350 W, auto sensing, I max = 10A
<b>Ambient temperature</b>	15°C – 55°C   60 F – 130F

BlueCatBio Europe

Hornungreuth 22a  
D-95512 Neudrossenfeld  
E-Mail: info@bluecatbio.de

BlueCatBio North America

Concord, MA  
Tel: +1 978 405-2533  
E-Mail: info@bluecatbio.com

[www.bluecatbio.com](http://www.bluecatbio.com)



BLUE CAT BIO