



The Surface Coating Specialists –
Supporting Imaging, HT Screening & HC Analysis
With High-Quality Surface-Coatings
For Cell Culture & Binding-Assay Applications

BioMedTech Laboratories Inc, the technology leader for high-quality surface coatings, offers our customers a full spectrum of precoated High-Content & High-Throughput platforms, and flexible custom coating options on a wide variety of plate, flask & vessel formats for cell-culture & immunoassay applications. Prepared by BioMedTech under stringent manufacturing practices in our U.S.A. facility designed for coating, BioMedTech products meet rigid quality specifications.

➤ **Featured For SLAS 2019 –**

New Surface-Coating Options for Cell-Culture

PEI & Synthetic-Amine Surfaces For Neural Cell Culture
bioSphere™ Surface For 3D Spheroid Culture
Surfaces Promoting Attachment of Non-Adherent Cell Types
Matrigel® / BME Surfaces for Cell Attachment & Expansion

bioSphere™ Surface For High-Throughput 3D Spheroid Culture
1536-Well, 384-Well & 96-Well Platforms
Ultra-Low-Base, Low-Volume & Standard Plate Formats
COP / COC, Glass-Bottom & Thin-Film Bottom Plates

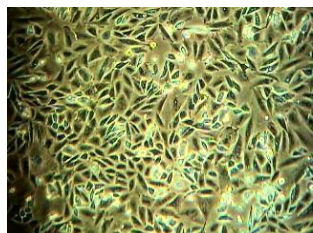
Ultra Low Base & Glass-Bottom Microplates – All Brands – All Formats
1536-Well, 384-Well & 96-Well Ultra-Low Base – All Brands – All Formats
COP / COC, Glass-Bottom & Thin-Film Bottom Plates – All Brands – All Formats
Compatible With Yokogawa & PerkinElmer Imaging System

EvaluPlate™ Multicoat Surface Evaluation & Optimization Tool
Optimize the Surface Coating for Your Cell-Type & Application
Optimize Binding & Blocking in Your Immunoassay Application
Multiple Surface Coatings in Separate Columns On Same Plate

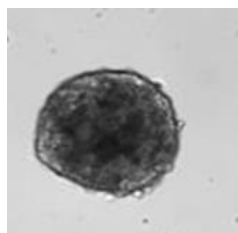
BioMedTech Supports All Systems, Formats & Applications –
Complete Selection of Cell-Culture Surface Coating Options – All Formats – Any Scale
Complete Selection of Binding-Assay Surface Coating Options– All Formats – Any Scale
Stabilized Poly- & Monoclonal Antibody Coating– All Formats - Any Scale

SURFACE COATING OPTIONS FOR CELL CULTURE APPLICATIONS INCLUDE -

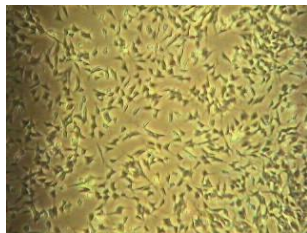
Collagens (rat, bov & human)	Laminins (Native & Recombinant)	Gelatin
Fibronectin	PDL/Laminin <i>Double Coat</i>	PDL, PLO, PEI, PLL
Vitronectin	NEW Synthetic-Poly-Amine (SAM)	PLO/Laminin <i>Double-Coat</i>
NEW Matrigel® / BME	NEW bioSphere™ Surface for Spheroid Formation and 3D-Growth	



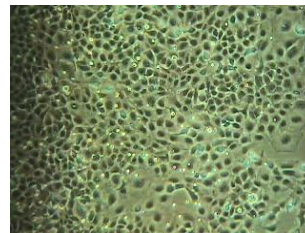
BHK-21



3D - SPHEROID



SH-SY5Y



HEK-293

SURFACE COATING OPTIONS FOR BINDING-ASSAY & IMMUNOLOGY APPLICATIONS INCLUDE -

Streptavidin	Protein A / G	Anti-GST
Poly- & Monoclonals	Avidin	Anti-Epitope-Tag
Biotin	Anti-His-Tag	Your Poly- & Monoclonals

BIO MEDTECH COATS ALL FORMATS OF PLATES, INSERTS, FLASKS, DISHES & MASS-CELL-PRODUCTION VESSELS

ALL MICROPLATES	NEW & FEATURED	ALL OTHER TC-WARE
All 1536-, 384- & 96-Well	Ultra -Low-Base Imaging Plates	6-Well & 12-Well Plates
Glass-Bottom, COP & COC	Evaporation Barrier Plates	24-Well & 48-Well Plates
Half-Area & Low-Volume	Multi-Well Chambered Slides	T-175, T-75, T-25 & Multi-Layer
Strip-Well	Well Inserts, Removable	Roller Bottles

FULL LINE OF GLASS-BOTTOM PLATES & CHAMBERED-SLIDES WITH SURFACE MATRIX OPTIONS FOR CELL CULTURE:



Glass-Bottom 6-Well



Glass-Bottom 12-Well



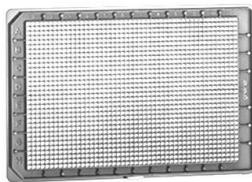
Glass-Bottom 24-Well



Glass-Bottom 96-Well



Glass-Bottom 384-Well



Glass-Bottom 1536-Well



Multi-Well Chambered Slide



Surface Coated Large Scale Cell Production Vessels

INTRODUCING: **EVALUPLATE™** THE MULTICOAT CULTURE SURFACE OPTIMIZATION TOOL FROM BIOMEDTECH

EvaluPlate™ features customizable multiple surface coating options on the same plate, each coating option occupying a discrete column, or multiple columns, on the same multiwell plate or microplate, from 6-well to 1536-well.

This format allows the researcher to evaluate the performance of the cell type of interest on a variety of culture surfaces, side by side within the plate. The multicoat format eliminates plate-to-plate variation concerns, while facilitating both visual and automated evaluation of the surfaces performance.

Choose a “**BioMedTech Panel**” offered for your cell type, or design your own from our menu of coating options.

1	2	3	4	5	6	7	8	9	10	11	12	13	14	15	16	17	18	19	20	21	22	23	24	25	26	27	28	29	30	31	32	33	34	35	36	37	38	39	40	41	42	43	44	45	46	47	48
LAMININ (LAM)								FIBRONECTIN (HFN)								SYNTHETIC AMINE (SAM)								COLLAGEN TYPE I								POLY-D-LYSINE (PDL)								PLO / LAM (Double-Coat)							

INDUSTRY-LEADING PACKAGING FOR GUARANTEED STABILITY & MAXIMUM SHELF-LIFE

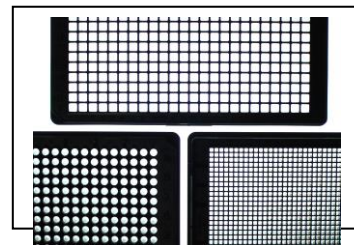
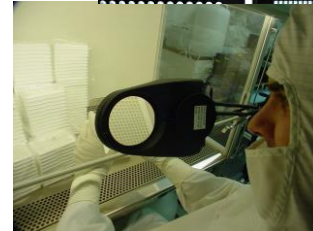
Vacuum sealing in vapor-barrier bags protects from moisture and oxygen.

EXTENSIVE QUALITY CONTROL OF COATED MICROPLATES

Low C.V. assured via proprietary methods measure coating uniformity & efficiency. Cell culture testing for attachment, growth and resistance against washing procedures.

OPTIMIZATION OF SURFACE COATING FOR ALL CELL LINES

BioMedTech custom designs complex extra-cellular matrices of networked collagens, fibronectin, proteoglycans and basement-membrane materials. Performance is optimized for imaging and HTS.



Please contact us to arrange an evaluation, discuss your requirements, and place an order. We appreciate the opportunity and look forward to hearing from You.

Peter LaGattuta, Business Development
 Direct: 239.384.9138
 peter.biomedtech@comcast.net

Joachim Sasse, Ph.D., President
 Office: 813.985.7180 Cell: 813.495.4604
 biomedtech@verizon.net

BioMedTech Laboratories, Inc.
 3802 Spectrum Blvd, Suite 154
 Tampa, FL 33612, U.S.A.
 813.985.7180 Fax: 813.558.2000
 www.biomedtech.com
 biomedtech@verizon.net

bioSphere™, EvaluPlate™ & EvaluSlide™ are trademarks of BioMedTech Laboratories
 CELLview™ & CELLdisc™ are trademarks of Greiner Bio-One GmbH
 Matrigel® is a registered trademark of CORNING, Inc.