

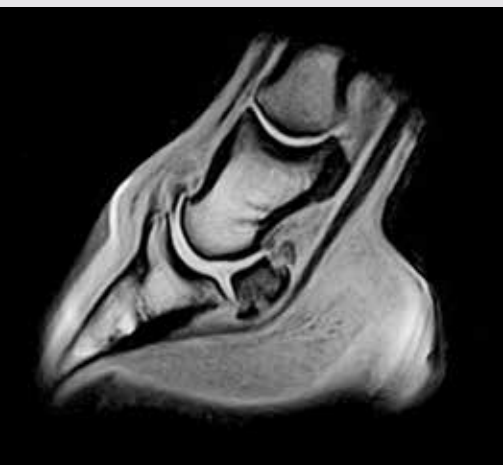
STANDING EQUINE MRI
Standing for Safety



EARLY, SAFE AND ACCURATE LAMENESS DIAGNOSIS.

MRI has long been the imaging method of choice in human medicine, making it the gold standard for diagnosing pathology. Hallmarq's Standing Equine MRI (sMRI) system brings the same diagnostic capability to equine clinical practice.

With the equine patient being at the forefront of every design decision, Hallmarq's unique sMRI capability avoids the risks associated with general anesthesia, and allows you to offer clients the most advanced lameness diagnosis modality on an out-patient basis.



THE VALUE OF STANDING EQUINE MRI

Traditional lameness diagnosis is a cycle of trial and review that relies on a slow process of elimination. With MRI, over 90% of examinations result in an immediate and definitive diagnosis, even in hard-to-image areas such as within the hoof*.

Soft tissues are barely visible on radiographs, and bone changes show up on MRI weeks before they can be seen by x-ray.

With an early and accurate diagnosis, treatment can be specifically targeted to the known cause of lameness, so reducing recovery time and any risk of further injury.

Hallmarq developed the world's only standing equine MRI scanner in 2002. Now with more than 70,000 horses scanned, and 90 installations in 23 countries worldwide, the company is the leading MRI supplier to equine veterinarians.

94% of horse owners said they had never refused a standing MRI when recommended by their vet.

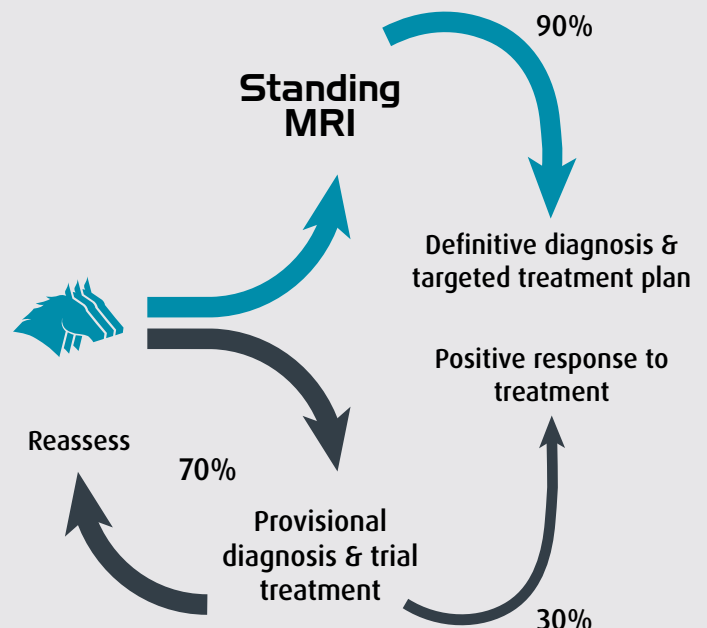
Survey of US equine veterinarians, 2016

AN IMMEDIATE, CLEAR DIAGNOSIS

If a conventional lameness examination does not give a clear result, the standard approach is to make a provisional diagnosis and treat accordingly. But about 70% of the time this is not successful, and the horse returns for further investigation.

With MRI 90% of cases provide a clear and immediate diagnosis:

- ✓ Clarifying the prognosis
- ✓ Giving confidence to the veterinarian and owner
- ✓ Guiding further treatment
- ✓ Reducing costs



*Powell S.E. Equine Vet J. 2012 Mar; 44(2):169-77 and Schneider R., <http://www.thehorse.com/Article/Print?articleId=28520>

CAN'T AFFORD MRI? THINK AGAIN.

Often, the cost of advanced imaging is beyond the means of a private clinic. However, Hallmarq's unique pay-as-you-go model means that with only a handful of cases per month, the system pays for itself and you need never be out of pocket.

MRI opens possibilities for building referral business and gaining downstream revenue from medical and surgical treatments of MRI diagnoses.

With initial outlay that could be less than a digital radiography system, perhaps it's time to be asking if you can afford not to have standing MRI.



THE BENEFITS OF HALLMARQ'S STANDING EQUINE MRI

MRI without anesthesia makes it much easier for a client to say yes to standing MRI than conventional, "down" MRI.

Each exam can be run with one operator and one horse handler, keeping your staff costs low.

Software upgrades, replacement RF coils and spare parts are included in your annual contract.

Seamless integration with PACS systems and DICOM standards means our images can be read using any standard workstation software, allowing you the freedom to choose your own radiologist to interpret the images.

Our advanced motion correction software is continually improving ensuring faster scan times, so you can scan more cases with lower costs.

We'll do all we can to help you grow your practice with educational material for staff, clients, and referring vets.

If you are not successful, we are not successful.

STANDING EQUINE MRI OPTIONS

Modular Unit

Site preparation
Room and system delivery

Monthly room rental

Standard Room

Site construction
RF shield
HVAC
Finish - walls, floor, lights
System delivery

Scan fee per case:

Fixed fee per examination regardless of the number of images taken
Discount for follow-up rescans

Monthly:

MRI system rental
Outstanding remote support, system service and maintenance

MODULAR UNIT

For only minimal initial capital outlay, we can deliver and install our modular equine unit - just provide the space, power and an internet connection and watch your MRI create a revenue stream from day one.

Hallmarq's modular unit can be placed fully-built on any hard standing at your practice with no compromise on efficiency nor image quality. The unit is fully weatherproof, air conditioned and RF shielded. Suitable for standing MRI only.

TECHNICAL SPECIFICATIONS

Unit size:

Length:	37 ft	11.144 m
Width:	9 ft 10 in	3 m
Height:	10 ft 6 in	3.2 m

Weight:

20,725 lbs	9400 kg
------------	---------

Maximum footprint:

Length:	39 ft 4 in	12 m
Width:	11 ft 5 in	3.5 m

(ramp open and steps fitted)

Electricity supply:

Single phase 220-240V, 63A

Safety features:

- Emergency lighting
- Secondary means of escape
- Guard rails to ramp
- 5 Gauss line contained within unit

External temperature range:

The modular unit can tolerate
+35°C / 95°F to -15°C / 5°F



STANDARD ROOM

Alternatively, your Hallmarq sMRI system can be installed in a room in a new or existing building.

This option involves a higher initial outlay, but allows for the possibility of performing scans under general anesthesia should the need ever arise.

To prevent radio interference the MRI system must be installed inside an RF screened room with metal lined walls and doors. Electrical power into the room must pass through a suitable filter.

Installation will require a pit below the magnet, to allow scanning at floor level. The region surrounding the pit in each direction (including downward) must be clear of magnetic materials, including concrete reinforcement bar, metal drainage pipes and communication or power wiring.

Dedicated air conditioning must be provided to maintain the temperature inside the room.

Hallmarq can advise regarding specialist suppliers to design and install a suitable facility.

TECHNICAL SPECIFICATIONS

Minimum room size:

Length:	22 ft 11½ in	7 m
Width:	16 ft 4½ in	5 m
Height:	9 ft 2 in	2.8 m

Pit dimensions:

Length:	8 ft 11½ in	2730 mm
Width:	4 ft	1200 mm
Depth:	1 ft to 1 ft ½ in	300 mm to 315 mm

Air conditioning - scan room:

Flow volume: 600 l/sec
 Cooling duty: 3 kW
 (heat generated only by the horse and personnel)
 Temperature control: (+/- of set temperature)
 +/- 4°F +/- 2°C
 Set temperature: (Fixed to preference in range)
 18°C / 64°F to 22°C / 72°F not adjustable thereafter

Recommended room size:

Length:	26 ft 3 in	8 m
Width:	19 ft 8½ in	6 m
Height:	10 ft 6 in	3.2 m

Electricity supply:

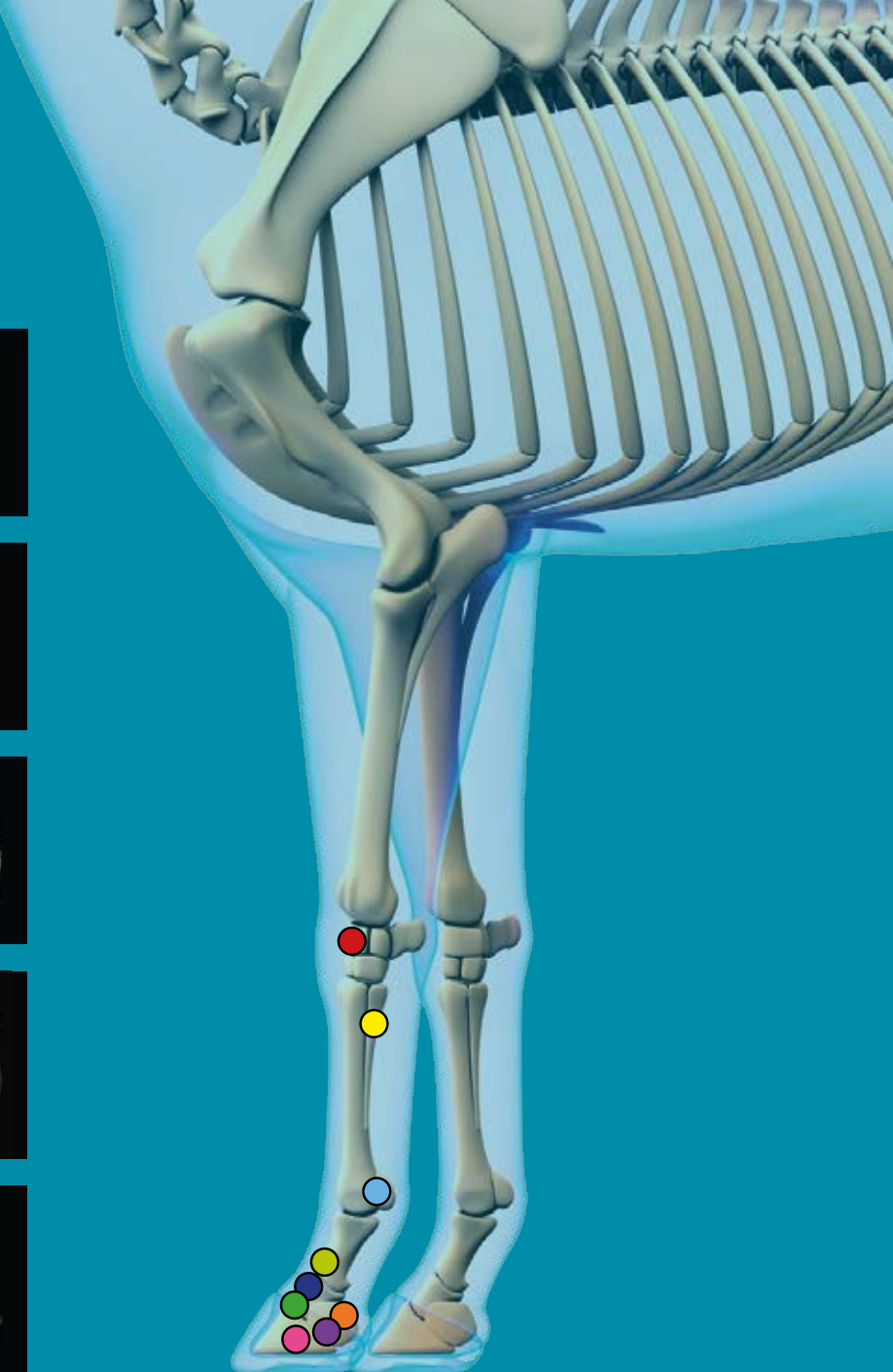
Single phase 220-240V, 32A

Air conditioning - console room:

Flow volume: 600 l/sec
 Cooling duty: 6 kW
 Temperature control:
 20° C +/- 2°C 68° F +/- 4° F

Hallmarq

Standing Equine MRI



Hallmarq Veterinary Imaging Inc.

20 Main Street, Acton, MA 01720, USA
+1 978.266.1219

Hallmarq Veterinary Imaging Ltd

Unit 5, Bridge Park, Guildford, Surrey, GU4 7BF, UK
+44 (0)1483 877812

hallmarq.net | info@hallmarq.net



©Hallmarq Veterinary Imaging 2016. All rights reserved.
Design and specifications are subject to change without notice. Version 1.0 0816