



A SMART INVESTMENT

6 Treatments/month (average 1000 shocks/tx)	
Average Revenue (Charge \$350/tx)	\$2,100
Trode Cost (.03 cents/shock)	\$180
Average Monthly Lease (Based on 60-month)	\$557
Total Cost per Month	\$737
Monthly Profit	\$1,363
Annual Profit	\$16,356

ENDORSEMENTS

“I’ve had a NeoVet for 4 years now. At first I was skeptical moving on from a bigger machine but this machine has exceeded my expectations. It’s portable and fits easily into my truck. The 2 probe heads make total sense and insure I can treat both distal limb issues and upper bodies and necks.

The customer service has been impeccable and I’ve had very few issues with it. Easy software upgrades via USB port make sending it in unnecessary.

I would absolutely recommend this shock wave machine to my fellow Veterinarians without hesitation.”
Dr. Kate Stephenson, BVM&S, MRCVS

“The NeoVet External Shock Wave Machine has been a great opportunity to treat horses in my clientele. This device has solved most of the problems we have had so far:

- *A longer cable for equine patients allowing easy access to main parts of the patient’s body.*
- *A nice and handy probe with a stop and start button to work safely*
- *And a good price per shock ratio*

Overall a great focal shock wave machine for our horses.”
Philippe Benoit, DVM, DACVSMR

“The support after the sale has been tremendous. The company stands behind their product and has expeditiously handled any issues with the machine or probes in a timely manner. We have been very pleased with this purchase.”
Cliff Honnas, DVM, DACVS

“The Neovet is a great shock wave machine with reliable effect and results but more importantly for us is that the customer service has been flawless.”
Omar Maher, DVM, DACVS, DACVSMR

“Your customer service is truly the best I have ever seen.”
Dr. Maureen Lunney, DVM

INNOVATIONS IN EQUINE MEDICINE SINCE 1999

At Nucleus, we are known and respected for the innovative products we have introduced to the veterinary industry. We are best known for our contribution to the shock wave therapy market but also launched a successful DR system and an intra-articular joint lubricant. Throughout, we have maintained a focus on science and have initiated many commonly quoted studies.

FOCUSED ON RESULTS

The most important characteristic of any veterinary medical device is its clinical effectiveness and safety. The **neo^{ET}2.0** engineers carefully preserved those characteristics that made previous equine shock wave therapy technologies effective. We have maintained the electrohydraulic energy source and the delivery remains focused. Our customers’ product experience and clinical feedback have been crucial to the improvements we have made. Through this feedback, we have been able to continue to improve our shock wave therapy equipment.

INDEPENDENT AND PRIVATELY OWNED

We are a wholly owned, independent and debt free company and don’t have to serve mixed motives and self-interest of venture capitalists or of a corporate parent. We strongly believe our success is dependent on making clients happy and this has driven us to continuously innovate and serve our customers to the best of our ability.

OUTSTANDING LOCAL SERVICE

Located just outside of Atlanta, GA our lead service technician has over 20 years of experience working on ESWT devices.



**MORE
POWER**
**MORE
PENETRATION**

Nucleus Regenerative Therapies, LLC
3375 Chastain Gardens Dr., Suite 150 | Kennesaw, GA 30144
info@neoshockwave.com | (O) 888.550.0071 | (F) 770-741-0776

www.neoshockwave.com

DISCERNING VETERINARIANS CHOOSE

neo_{VET} 2.0

MORE ENERGY RANGE

The **neo_{VET} 2.0** features 12 distinct energy levels, the most of any electro-hydraulic system, the most effective and widely used shock wave technology in veterinary medicine.



LOWER COST OF OWNERSHIP

The **neo_{VET} 2.0** has a much lower refurbishment cost and that cost is guaranteed never to go up. Our clients save an average of \$30,000 on refurbishments alone!

MORE POWER

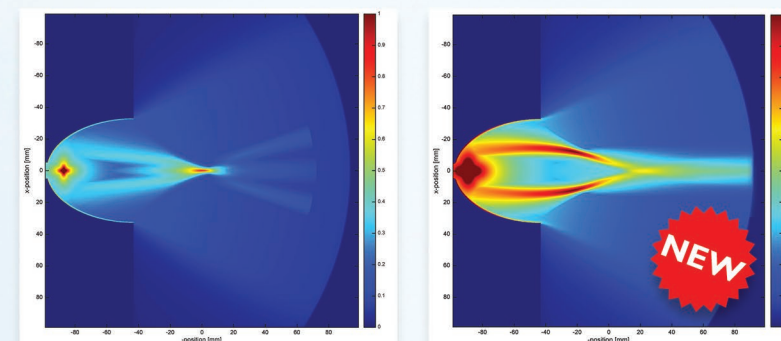
Horses with sore backs and feet especially benefit from the increased peak power. The **neo_{VET} 2.0** shock wave equipment is more than twice as powerful as older electro-hydraulic focused devices.

PORTABLE

Weighing just 31 lbs, the **neo_{VET} 2.0** shock wave device is easy to carry and stow. The new system only requires two probes and one cable further improving portability.

ORTHOPEDIC THERAPY HEAD

Shock wave machines were originally designed to break kidney stones, a process called lithotripsy. The objective being to break a stone where the beam converges while having little or no effect on the surrounding tissue. Even today, all other shock wave machines have the old lithotripsy design.



OLD DESIGN

neo_{VET} 2.0 DESIGN

In musculoskeletal applications we want the opposite. The objective is not to drill a hole into a lesion but to target the area immediately surrounding the lesion. Our new Orthopedic Therapy Head is focused over a broader area so more cells are exposed to the energy with each pulse resulting in a greater biologic response.

CABLE FREE TRIGGER

The trigger is now conveniently located on the therapy head, giving the operator more control and safety.

LONGER CABLE

The therapy cable is 9'5" for better reach. Treating backs on large horses, or simply keeping the machine at a safe distance, is now so much easier.

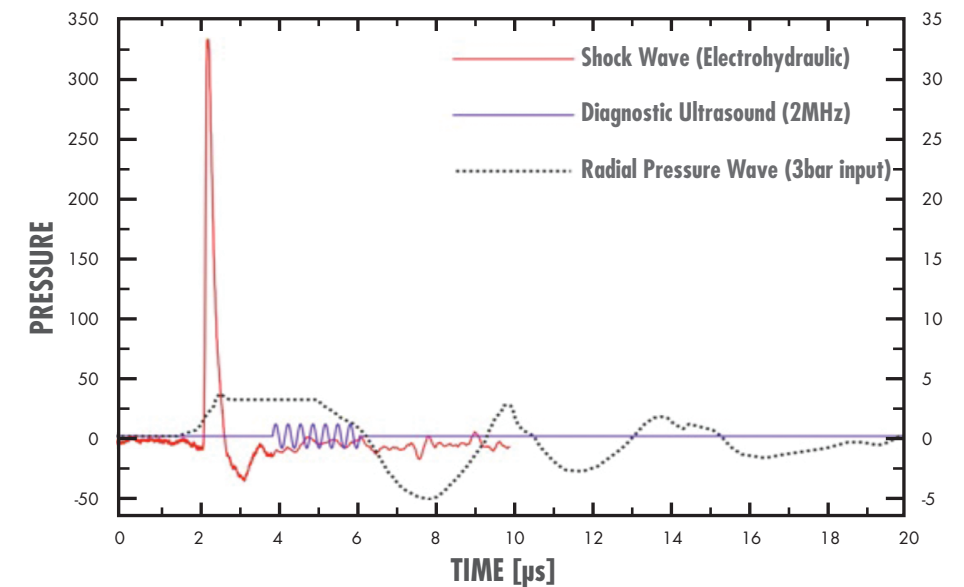
EASY UPGRADES

Thanks to modern technology and remote access capabilities the **neo_{VET} 2.0** can quickly and easily receive software upgrades in the field.

WHAT ARE SHOCK WAVES?

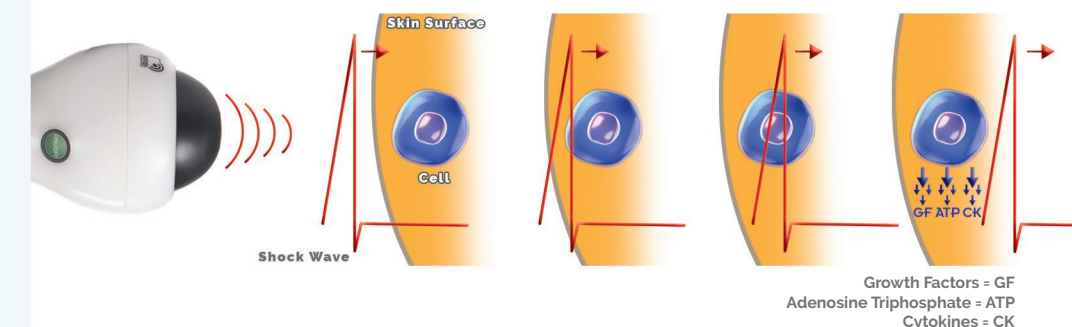
Shock waves are soundwaves that travel through tissue at very high speeds. The signal profile of a shock wave is shown here in RED. Essentially, shock waves are high-pressure pulses. Compare this to ultrasound, shown here in BLUE.

Comparison of Three Different Acoustic Waves



HOW IS THE HEALING RESPONSE TRIGGERED?

Each shock wave pulse causes a sudden pressure spike that travels throughout the tissue (see image). Cells react to sudden pressure changes with alarm, just like a person would to a thunderclap, and release distress signals which trigger the body's healing response. Shock wave therapy keeps the repair process going until the injury is completely healed.



WHAT IS THE BIOLOGIC RESPONSE?

Extracorporeal shock wave therapy physically stimulates a cell's biologic response and healing mechanisms. The specificity of the response to the physical stimulus is cell dependent and leads to several biologic responses including:

- Reduction of inflammation and thus pain
- Release of growth factors
- Activation of stem cells, platelets, etc.
- Increased blood flow