



## What can I expect from a shock wave treatment?



An average treatment is relatively fast and easy, typically 10-15 minutes. Because we are dealing with sound energy and deep

healing, a mild and reversible sedation is often administered. This will help ensure the horse's comfort.

Your vet will select the number of pulses for the indication being treated, apply the trode and deliver the pulses as necessary.

Typically you can see results with 1-3 treatments. It is important to note, however, that this is a cumulative energy treatment and the biological responses and healing effects take place over a period of time. A brief analgesic period is sometimes seen and usually passes 3-4 days post-treatment.

It is, therefore, important that the horse is rested during this period, although confinement is not necessary. It's important to follow the post-treatment directions of your veterinarian as they will vary based on your horse's specific condition.



## Back to Work with the Gold Standard in Shock Wave Therapy

More than a decade of research and clinical success

- ~90% success in treating backs (Virginia Equine Imaging)
- Coffin joint collateral ligaments treated by shock wave healed 50% faster than non-treated (Anoka Equine Vet Services)
- 81% improvement in horses with Navicular Syndrome (McClure S, Iowa State University, 2004 AAEP proceedings)
- Osteoarthritis in carpal joints – lameness in horses treated improved significantly compared to non-treated (Colorado State University, AJVR 2009)
- Healing time for treated wounds was significantly shorter than untreated wounds (McClure S, JAVMA 2009)

**Backed by top veterinarians**

**Used in more clinics and universities worldwide**

**Led the way for coverage by equine insurance companies**

**Not all shock wave is created equal. Top vets know, when results matter, PulseVet delivers.**

# PulseVet®

PulseVet.com

800.245.4417 | info@pulsevet.com

VersaTron and ProPulse are available exclusively from Pulse Veterinary Technologies, LLC. PulseVet is committed to advancements in veterinary science and works with leading universities and private veterinary practices to provide evidence-based medicine supporting the science of shock wave technology and validating new indications.

# PulseVet®

Extracorporeal Shock Wave Therapy



Frequently Asked Questions About

# ProPulse®

VersaTron®



# High-Energy, Focused VETERINARY SHOCK WAVE that's UNMATCHED

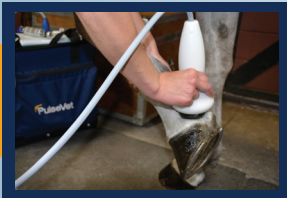
## What is shock wave or ESWT?



ESWT, commonly known as "shock wave therapy" is a noninvasive, high-energy, pressure wave treatment, which is

commonly used in human and veterinary medicine. It helps the body in relieving pain, speeding healing and improving the quality of healing. Shock wave is a much higher energy treatment and can penetrate to deeper areas than many other types of modalities.

"Shock wave" is a physics term to describe a rapid increase in pressure, such as the energy from an explosion or thunder resulting from lightning. "Shock wave" does not refer to electrical shock. It is actually a high-energy SOUND wave treatment.



## How does shock wave work?

Shock wave provides a high-energy, focused pressure wave. The pressure wave acts as a mechanical force at the cellular level causing various biological reactions, including the release of proteins associated with decreased inflammation and increased blood vessel formation.

Shock wave has also been demonstrated to recruit stem cells, and positively regulate inflammatory proteins associated with osteoarthritis.

## What is shock wave used for?

Shock wave has been proven effective and is considered the gold standard of treatment for a variety of conditions that result in pain and lameness, including:

- Tendon and ligament and muscle injuries (suspensories; bowed tendons; muscle strains)
- Osteoarthritis/Degenerative Joint Disease (bone spavin; hock injuries; ringbone)
- Foot/Heel Pain (Navicular syndrome/foot lameness)
- Bone healing/fractures (splints; stress fractures; buck shins)
- Back and neck pain (kissing spines/lumbosacral pain/arthritis)
- Wound healing

Shock wave can help your horse return to work more quickly and may help to prevent recurrent injuries.

## Can shock wave be used with other treatments?

Shock wave can be used on its own (as an alternative to surgery) or with other modalities.



## Are there different types of shock wave?

Yes, there are a variety of technologies available, and the key differences directly correlate to safety and efficacy. In addition, there is a radial pressure wave technology which is often falsely referred to as a shock wave technology. PulseVet's VersaTron electrohydraulic technology is considered the gold standard in equine medicine. It is also covered by most insurance companies.

The technology has been documented in extensive human and animal research and validated in thousands of clinical studies. It is the only type that provides true focused energy and true shock waves at all energy settings which is critical to ensuring results. The versatility of the device and different penetration depths make it optimal for various indications.

