



# Business Solutions

## Advanced Credit Cards

Red Maple's Advanced Credit Cards provides companies a solution to securely accept and process credit card payments. The system works natively with Microsoft Dynamics™ 365 for Finance & Operations (F&O) and Retail, Microsoft Dynamics™ AX 2012 and Retail, and AX 2009.

Red Maple works with more than a dozen processors, gateways and payment providers to provide credit card solutions via e-commerce, retail and card not present scenarios including call centers.



### FEATURES AND BENEFITS:

- ✓ Merchants select their own processor
- ✓ No transaction fees
- ✓ Omni channel
- ✓ Tokenization
- ✓ Hosted Pay
- ✓ Level II and Level III
- ✓ Additional services: chargeback management and processing rules by card type
- ✓ Current PCI PA-DSS Validation
- ✓ Integration points include: sales orders, call center, project proposals, service orders, free text invoices and A/R payment

## StagedPay™

Staged Pay is a patent-pending, hosted credit card solution that dramatically changes how merchants take credit card payments. StagedPay integrates with Microsoft Dynamics™ 365 F&O, Microsoft Dynamics™ AX 2012 or 2009, Microsoft Dynamics™ Customer Engagement (formerly CRM) or can be standalone.

With StagedPay, merchants NEVER have the customer's entire credit card number. StagedPay uses a two-step authentication process for secure payment transactions. It works like a combination lock, allowing merchants to accept and process credit cards using only part of the card number.



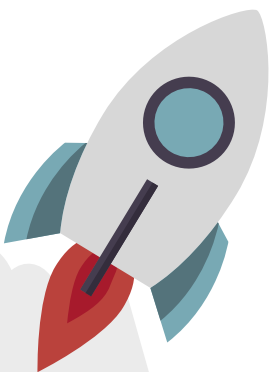
### FEATURES AND BENEFITS:

- ✓ Includes a customer portal to allow customers to manage payment methods and pay invoices
- ✓ Allows merchants to process credit cards and ACH payments securely via the portal
- ✓ Processes recurring invoices and allows customers to manage subscription payments
- ✓ Integrates to several major processors and gateways so the merchant can choose the processor
- ✓ Reduces PCI footprint and in some cases can qualify a merchant to use an SAQ-A
- ✓ Complies with EU PSD2: Strong Customer Authentication (SCA)



## Advanced Commissions

Red Maple's Advanced Commissions is a powerful solution that removes traditional limitations on standard commission and compensation structures. It provides Microsoft Dynamics™ 365 F&O and Microsoft Dynamics™ AX customers with a native, flexible tool to accommodate current and future commission needs.



**PURCHASE MODULES  
INDIVIDUALLY OR COMBINE  
THEM TO CREATE A UNIQUE  
SOLUTION**



### FEATURES AND BENEFITS:

- ✓ Commission basis can be based on: revenue, margin, weighted margin, discount percentage, margin percentage, unit price and item quantities
- ✓ Selection of commissionable items can be based on: inventory, customers, territories, sales groups and other criteria
- ✓ Calculations can be calculated using: a flat amount, a percentage, quantity sold or a combination of such
- ✓ Commission payments can be eligible to be paid: upon invoice posting, upon receipt of payment, periodically using batch or periodically using a batch after payment has been received
- ✓ Commissions can be adjusted using: commission adjustment journals, missed commission journals and payment journals
- ✓ Advanced features include: split commissions, intercompany commissions and team commissions
- ✓ Commissions can be paid to: employees, contractors, customers and vendors



## Advanced Trade & Pricing

Red Maple's Advanced Trade & Pricing enables companies to efficiently manage customer relationships when delivery, pricing and volumes are the critical keys in the relationship. Advanced Trade & Pricing works natively with Microsoft Dynamics™ 365 F&O and Microsoft Dynamics™ AX and allows the sales staff to focus on the customer.



### FEATURES AND BENEFITS:

- ✓ Advanced pricing and discounting
- ✓ Billing, billing schedules and recurring billing
- ✓ Revenue recognition of complex transactions
- ✓ Automated contract generation and renewals
- ✓ Warranty tracking and trade claims



**Find out more at [RedMaple.com](http://RedMaple.com)**



**Red Maple®**