

# RAYCARE 2A IS HERE! THE NEXT-GENERATION OIS

Welcome to RayCare 2A\*, the next generation oncology information system (OIS) designed to support comprehensive cancer care. Version 2A of RayCare adds the functionality needed for clinics to use RayCare as their sole oncology information system (OIS).

---

## ONE ONCOLOGY WORKFLOW

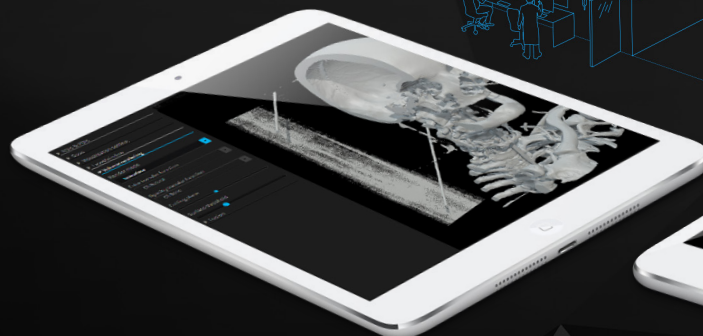
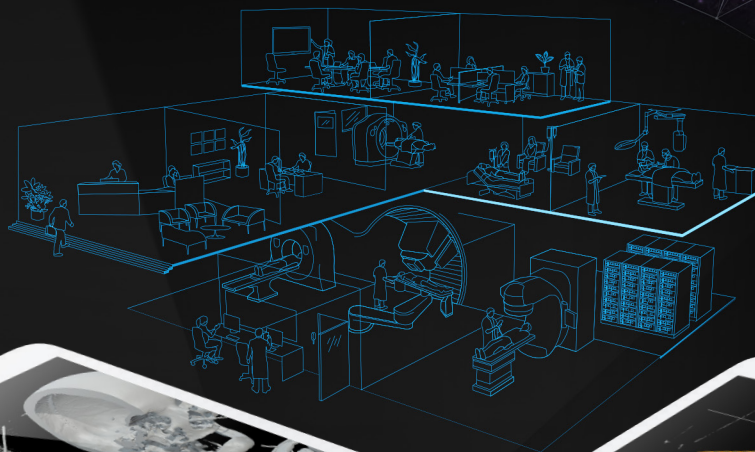
RayCare enables a truly integrated approach across oncology disciplines. Many cancer patients receive a combination of treatment types, and RayCare is designed to reflect this. RayCare enhances the possibilities of modeling the patient's treatment path and supporting multi-disciplinary as well as multi-modality workflows. This will be achieved through efficiently coordinated activities across radiation therapy, chemotherapy and surgery. It facilitates sharing of clinical information related to the patient and enables communication between specialties to ensure the best possible care.

---

## RAYCARE ADVANTAGES

RayCare will answer the demand from clinics for a more user-friendly and workflow-oriented information system that can support the future of cancer treatment.

- Platform-independent architecture
- Comprehensive cancer treatment
- Digital oncology workflows
- Designed for adaptive therapy
- Schedule and resource optimization
- Tumor board management
- State-of-the-art usability
- Enterprise-wide integration
- Structured for data analysis
- Accessible on mobile devices
- Machine learning system



\* Subject to regulatory clearance in some markets.



## RAYCARE 2A FEATURES

RayCare 2A builds on RayCare 1's task management and automation features for the patient workflow and treatment planning activities in RayStation, as well as lots of new features and enhancements throughout the system.

- Patient schedule and check-in
- Task-based and rule-based scheduling for all resources
- Diagnosis and staging
- Clinical documentation and notes
- Planning whiteboard
- Radiation treatment management
- Automatic capture of billable codes from tasks
- Enhanced workflow & task management
  - Checklists
  - Add tasks on the fly
  - Store all task notes and messages in the patient chart
- Integrated PACS solution, RayPACS

## HOW DOES RAYPACS SUPPORT RADIATION ONCOLOGY DEPARTMENTS?

RayCare 2A incorporates RayPACS, a unique managed PACS that makes it fast and easy to retrieve and share images. RayPACS is fully integrated with the RayCare workflow management system, enabling automated imaging workflows.

- Supports storage and viewing of DICOM RT objects
- Support for non-DICOM objects
- Image viewer with advanced features such as image fusion
- Automation of the planning workflow in RayStation using categories
- One-click data anonymization
- Configurable routing rules to automate DICOM workflows
- PACS scripting framework that allows clinics to define scripts for modifying imported and exported data

