

# OpenBeds

**OpenBeds** is partnering with state government to provide a **cloud-based platform** for hospitals within the state. OpenBeds enables hospitals to **automate reporting of available critical beds, equipment and trained clinicians across health care facilities** during the COVID-19 pandemic.

Automated reporting eases hospital's burden and enables federal and state reporting requirements.



Automation allows resource teams to focus on clinical care

## Platform Benefits



Direct messaging is quicker than phone calls



Immediate implementation and no formal training required



Instant feedback on resource availability



Access to new pandemic resources such as military hospital beds



Reduces staff stress



Saves time



Remote location mobility



Compliant with Federal privacy regulations



Real-time data and automated reporting

## Platform Features



Secure and HIPAA-compliant access, authentication & storage



Automated Real-time bed availability



Organization to organization digital messaging



Global network sends alerts or messages simultaneously to all members



Customizable dashboard



Resource repository for network participants



Mobile device enabled



Rapidly scalable



Automated account creation and intuitive interface

For additional information or access to the platform please contact:

**Nishi Rawat**

Founder



[nishi@openbeds.net](mailto:nishi@openbeds.net)



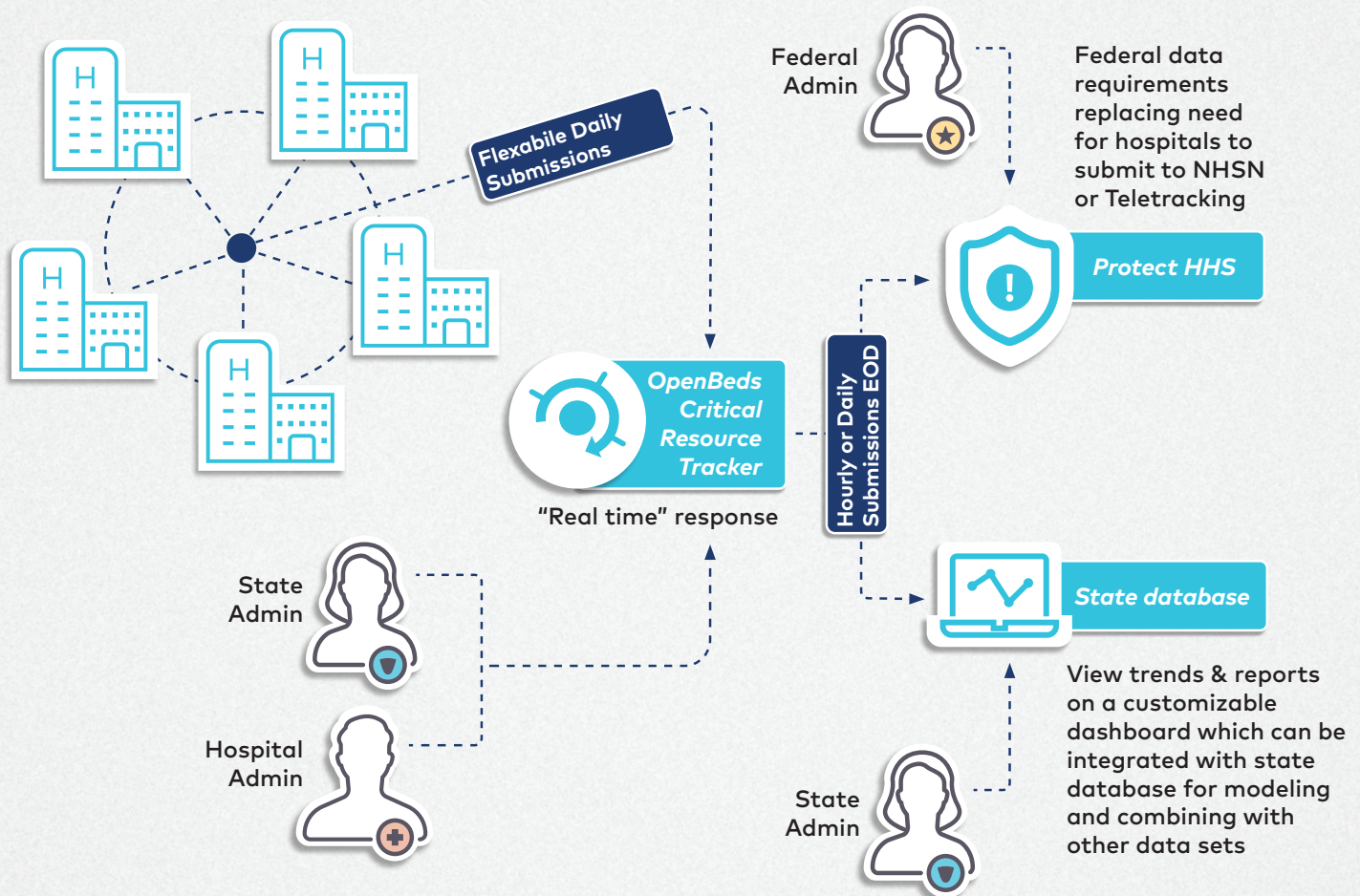
[410-303-4067](tel:410-303-4067)



# OPENBEDS CRITICAL RESOURCE TRACKER



During the **COVID-19 pandemic**, it is critical to have access to real-time information for resources like available critical beds, key personnel, and vital equipment. This is only possible with accurate and on time data reporting. With **OpenBeds Critical Resource Tracker**, you can ease the hospital's burden by **automating required reporting** and standardize the calculation of state and federal data elements, eliminating interpretations and manual data entry. You can also add state-specific data elements and generate real-time analytics & reports via a customizable dashboard.



## OVERVIEW:

- **Generate real-time analytics & detailed reports** via a customizable dashboard to help aggregate and report hospitals critical resources
- **Automate data submission** to the federal government (HHS Protect)
- **Eliminate interpretations of data elements via manual entry** and improve data accuracy by standardizing state and federal data elements
- **Customizable system** to add state-specific data elements and requirements
- **Automate submissions** and improve data timeliness for your hospitals
- **Ability to see trends** across the state, regions and hospitals in one place with consistent reporting
- **Dedicated project management resources** to guide on-boarding
- **Average implementation time per hospital: 3 weeks**