



**Peak Analysis  
& Automation**

*paa laboratory robots*



*robots*

[www.paa-automation.com](http://www.paa-automation.com)

Robots • Grippers • Linear Rails • Plate-Storage Stacks • Random-Access Hotels

Peak Analysis & Automation manufactures a full line of robot and scheduling software products for automation within the life sciences industry. PAA combines world-class engineering with state-of-the-art manufacturing to produce standard, as well as special OEM robotics for its customers.

We incorporate the latest technologies into all our products. These technologies enhance the performance and reliability of everything we produce. We supply many brand-labeled devices to our partner OEM's. Our products are designed to be customized and optimized for each customer's needs.



**KiNEDx™ Laboratory Robot**  
(300mm radial X 250, 470,  
or 660mm vertical strokes)



**ProNEDx™**  
Ultimate-Performance Robot  
(450mm radial X 250, 500,  
or 750mm vertical strokes)



**BiNEDx™ Microplate Handler**  
2-DOF robot, 60 standard plates,  
pre-taught stack package



**SciNEDx™**  
OEM Diagnostics Robot  
(430mm radial X 1M or 2M vertical strokes)

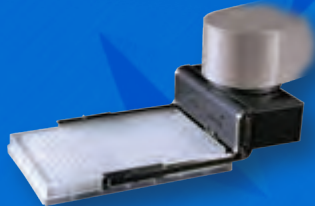
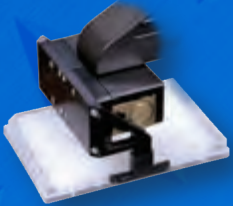


**Rail Extender**  
Strokes: 500, 1000, or 2000mm



**Plate Gripper PTP**

Pneumatic top-grip,  
landscape or portrait

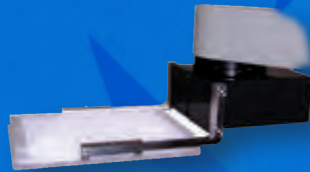


**Plate Gripper PSP**

Pneumatic side-grip,  
landscape or portrait

**Plate Gripper STU**

Electric servo top-grip,  
landscape and portrait



**Plate Gripper SSU**

Electric servo side-grip,  
landscape and portrait



**Random-Access Hotels**

Side-grip, landscape or portrait  
Capacity: 15, 22, or 25 Plates

Portrait orientation, 22 plates,  
robot-friendly doors

**Light-Shielding  
Random-Access Hotel**



**Sequential Plate Stack**

Top-grip-landscape  
Capacity: 15, 30, 45, or 50 plates



**Sequential Plate Stack**

Side-grip, landscape or portrait  
Capacity: 30, 45, or 50 plates



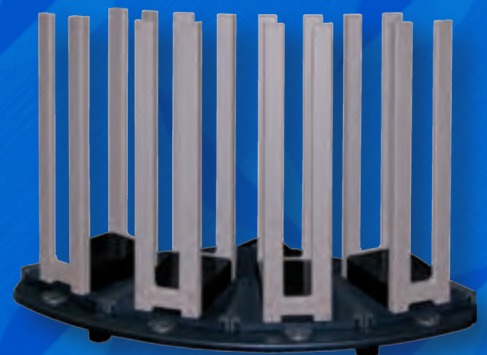
**Plate-Storage Carousel**

Capacities: 10 Random-access  
Hotels, 150 or 220 plates  
10 Sequential stacks – 300 or 450 plates  
Orientation: landscape or portrait



**Stack or Hotel Packages**

4-Places, universal docking



## paa robots comparison table

Movement	BiNEDx	KiNEDx	ProNEDx
Degrees of Freedom	2	4	4
Horizontal Reach (shoulder-to-wrist centers)	390mm (15.34")	422mm (16.6")	601mm (22.52")
Shoulder Rotate	324°	324°	450°
Vertical Stroke, Standard Height	470mm	470mm	500mm
Short Option	N/A	250mm	250mm
Tall Option	N/A	660mm	750mm
Wrist Rotate	N/A	330°	330°
Payload	2 kg	2 kg	2.5 kg
Blended Moves	No	No	Yes
Repeatability			
X-Y Axes	±0.05mm	±0.1 mm	±0.08mm
Z-Axis	±0.03mm	±0.03mm	±0.03mm
Teaching			
Drag-to-Point Teaching	No	No	Yes
Safety			
Dynamic Current-sensing	No	No	Yes
Shoulder Collision Release	Yes	Yes	Not Required
Wrist Collision Release	Yes	Yes	Yes
Compliance	CE	CE	CE, CSA, RoHS

**For all your automation applications including robots, scheduling software and fully integrated workcells contact:**



**Peak analysis  
& automation**

Peak Analysis and Automation Inc  
3330 Fillmore Ridge Hts  
Colorado Springs  
Colorado • 80907 • USA  
**+1 719.598.3555**  
email: info@paa-automation.com

Peak Analysis and Automation Ltd  
6 Armstrong Mall • Southwood Business Park  
Farnborough • Hampshire  
GU14 0NR • UK  
**+44 1252 373000**  
email: info@paa-automation.com