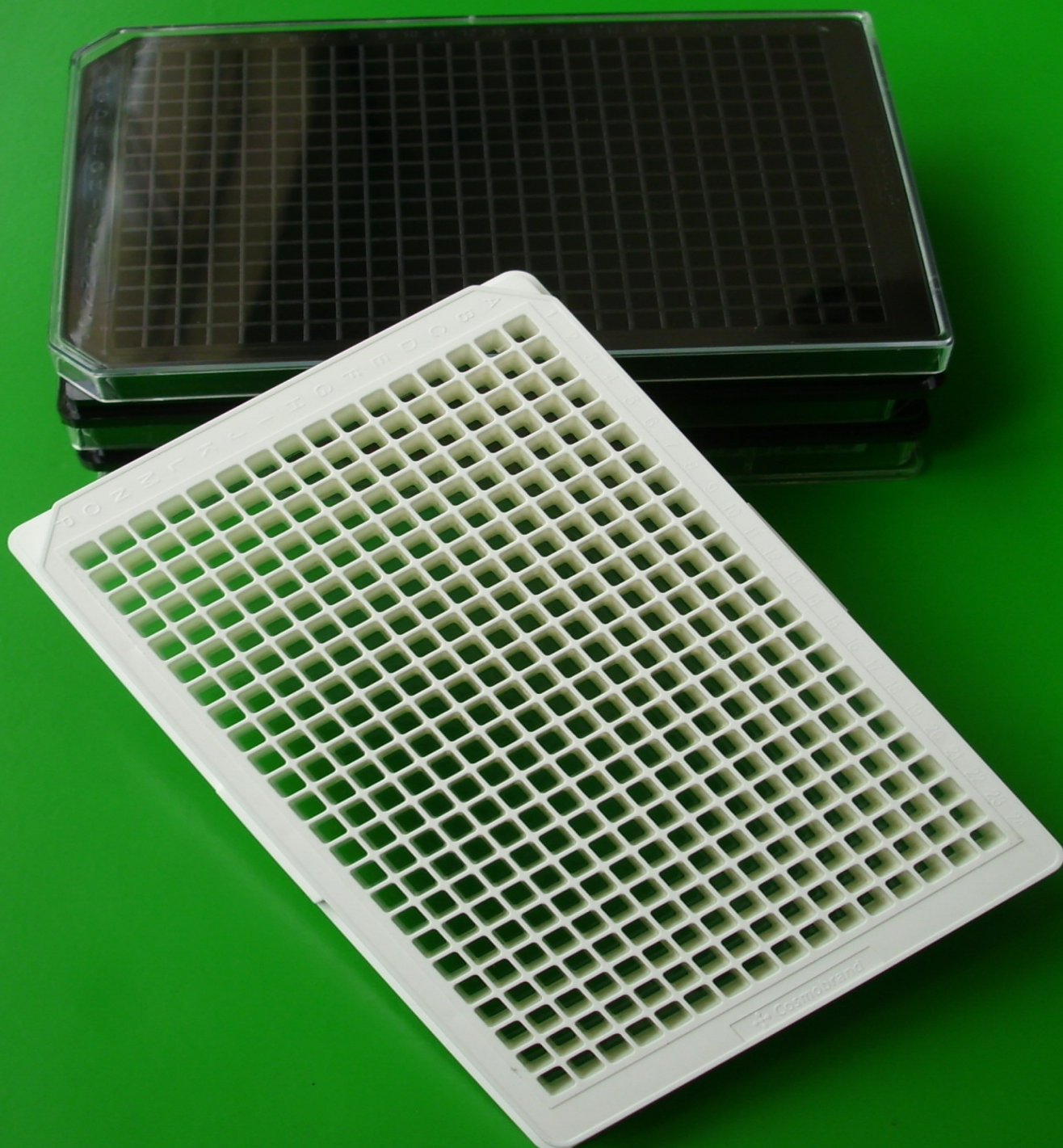


# Microplates Guide



# Innovative labware for life sciences

## Company Profile

Cosmo Biosciences Inc. was founded in 2005, we focus on developing and making the high-quality disposable plastic labware for Biotech, Pharmaceutical, Bio-Medical and Life Science research.

We also offer a complete solutions for innovative project to reach the market.

### Applications of our Products :

- a、 Cell Culture
- b、 Automated Liquid Handling
- c、 Immuno-assay
- d、 Protein Crystallization
- e、 Spectrophotometry
- f、 ART/IVF
- g、 RT-PCR
- h、 HTS Drug discover

### Our Major specialties

- a, Plastic surface modification/coating
- b ,New product design and development
- c, Injection
- d, Mold design&tooling
- e, Welding/bonding(ultrasonic,laser and thermo)
- f, Screening printing
- g, Assembly
- h, Gamma irradiation
- i, Fabrication microfluidic/channels

## Quality Control

Certified ISO 9001:2008

## Business&OEM service

Distribute  
Customized  
OEM&ODM

## How to order

Ordering directly from Cosmo or through authorized distributors

Terms and Conditions for direct orders:

No minimum order required

Payment terms is T/T 50%,50% on boarding

Freight terms are Ex-factory at Science park, Guangzhou

Customers Service time:

Monday through Friday 8:00am-6:00pm (Beijing Time)

support@cosmobrand.com.cn

Please visit [www.cosmobrand.com](http://www.cosmobrand.com) to get our updated products and events

# Microplates Guide

## **Tissue Culture**

Multi-well Plates ----- 1  
(Omni-tray,4-well,6-well,12-well,24-well,96-well,384-well)

## **Co-Culture**

Insert-well Plates ----- 2

## **Assay Microplates**

ELISA Plate,fluorescence/luminescence,UV-assay plates, ----- 3

## **Storage&Collection**

Deep well plates,Filter Plates, Sea film ----- 4

## **Protein Crystallization Plate**

Sitting drop ----- 5

Welcome to visit [www.cosmobrand.com](http://www.cosmobrand.com) to get new product informations.

Further information, visit us at [www.cosmobrand.com](http://www.cosmobrand.com) E-mail: [us.info@cosmobrand.com](mailto:us.info@cosmobrand.com)

1633, Bayshore, Hwy, Burlingame CA. 94010, USA Phone: +1(415)320-2527  
4, Nanyun 4<sup>th</sup> Road, Science Park, Guangzhou 510663 China Phone: +8620-3221-8258

© 2013 Cosmo Biosciences Inc.



## Tissue Culture Plate

### Features

- » Made of super optical polystyrene
- » TC Treated surface for consistent cell attachment and growth
- » Low-Evaporation Lid, Serrated gripping panels and writing patch
- » One-way lid prevents cross-contamination while still allowing for gas exchange
- » Alphanumeric well identification
- » Stackable design, with writing on areas for identification
- » SBS standard footprint, compatible with automated instruments
- » Steriled by gamma irradiation
- » Individually medical-style wrapped, easy peel to open
- » Available with bar code for tracking

### Ordering Informations



Cat.No.	Description	Sterile	Pack of
1101-101	1-Well	yes	Individually Wrapped Case of 100plates
1101-004	4-well Plate,TC 66×66mm	yes	Individually Wrapped Case of 120plates
1101-006	6-well Plate,TC	yes	Individually Wrapped Case of 100plates
1101-012	12-well Plate,TC	yes	Individually Wrapped Case of 100plates
1101-024	24-well Plate,TC	yes	Individually Wrapped Case of 100plates
1101-096	96-well Plate,TC	yes	Individually Wrapped Case of 100plates
1101-384	384-well Plate,TC	yes	Individually Wrapped Case of 100plates

### Technical Informations

Cat.No.	1101-101	1101-004	1101-006	1101-012	1101-024	1101-096	1101-384
Capacity mL/well	57	6.0	15.5	6.0	3.5	0.37	0.12
Growth area cm <sup>2</sup> /well	54	3.8	9.6	3.8	2.0	0.32	0.12

Further information, visit us at [www.cosmobrand.com](http://www.cosmobrand.com) E-mail: [us.info@cosmobrand.com](mailto:us.info@cosmobrand.com)

1633, Bayshore, Hwy, Burlingame CA. 94010, USA  
4, Nanyun 4<sup>th</sup> Road, Science Park, Guangzhou 510663 China

Phone: +1(415)320-2527  
Phone: +8620-3221-8258

© 2013 Cosmo Biosciences Inc.

## Co-Culture/Insert-well system

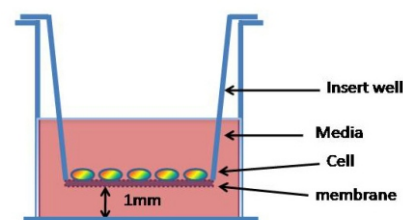
### Applications

Cell culture including transport studies, toxicity tests, Chemotaxis studies and electron microscopy,

### Description

Both membrane types are transparent when wet and are suitable for phase contrast and Optic Systems, Insert well is a polystyrene fitted with a PC membrane bottom for use in 6 and 24-well plates. Available in two mesh sizes and two diameters, provide ultimate flexibility in retaining fragile tissues during processing and staining. 6well insertwell of 24mm diameter and 24well of 12mm diameter.

More insert well information , welcome visit our website or Email to us.



Cat.No.	Dimension	Description	Sterile	Pack of
650-106	6-well Plate	6-well Plate with 24mm insert well, PC membrane, Pore size:0.4µm	yes	Individually Wrapped Case of 5plates
650-206	6-well Plate	6-well Plate with 24mm insert well, PC membrane, Pore size:3.0µm	yes	Individually Wrapped Case of 5plates
650-124	24-well Plate	24-well Plate with 12mm insert well, PC membrane, Pore size:0.4µm	yes	Individually Wrapped Case of 5plates
650-224	24-well Plate	24-well Plate with 12mm insert well, PC membrane, Pore size:3.0µm	yes	Individually Wrapped Case of 5plates
620-025	Insert well	24mm insert well, PC membrane, Pore size:0.4µm	yes	Individually Wrapped Case of 30wells
620-125	Insert well	24mm insert well, PC membrane, Pore size:3.0µm	yes	Individually Wrapped Case of 30wells
610-010	Insert well	12mm insert well, PC membrane, Pore size:0.4µm	yes	Individually Wrapped Case of 60wells
610-110	Insert well	12mm insert well, PC membrane, Pore size:3.0µm	yes	Individually Wrapped Case of 60wells
630-020	Insert well	24mm insert well, PC membrane, Pore size:3.0µm	yes	Individually Wrapped Case of 30wells
630-021	Insert well	12mm insert well, PET membrane, Pore size:0.4µm	yes	Individually Wrapped Case of 60wells

Available pore size are including 0.4µm, 3.0µm, 5.0µm, 8.0µm, 12.0µm

Further information, visit us at [www.cosmobrand.com](http://www.cosmobrand.com) E-mail: [us.info@cosmobrand.com](mailto:us.info@cosmobrand.com)

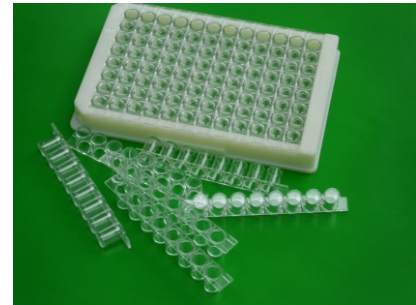
1633, Bayshore, Hwy, Burlingame CA. 94010, USA Phone: +1(415)320-2527  
4, Nanyun 4<sup>th</sup> Road, Science Park, Guangzhou 510663 China Phone: +8620-3221-8258

© 2013 Cosmo Biosciences Inc.

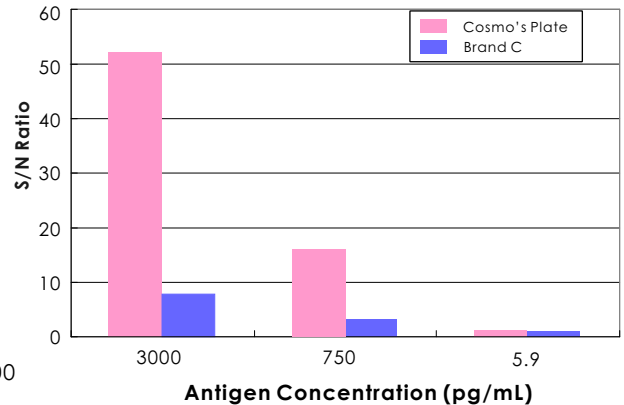
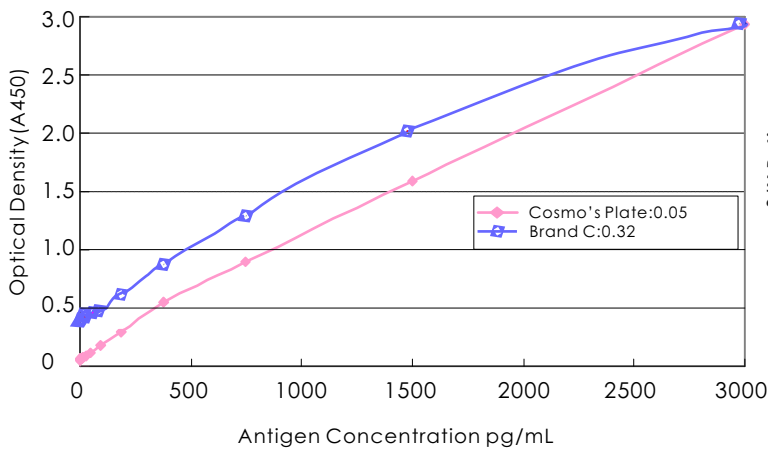
## 96-well ELISA plate

### Features

- Made of optical polystyrene
- High sensitive and wide dynamic
- Low background and high S/N ratio
- Available at strip and one structure
- SBS standard format
- Compatibility with automated reader and washer
- Each lot tested binding capacity



### Comparison of background



\* The absorbance was average of the fourfold reading for each concentration.  
 \* This assay was carried out according to the general protocol (blocking buffer: BSA)

### Test Report

- High-Binding: approx. 500ng Mouse IgG/cm<sup>2</sup>
- Mid-Binding: approx. 350ng Mouse IgG/cm<sup>2</sup>
- Each lot tested for binding of well-to-well

### Ordering Informations

Cat.No.	Capacity μl/well	Description	CV	Pack of
1105-096	320μl	High-binding, 8-well strip, Flat bottom	≤3%	Pack of 10plates Case of 200plates
1105-196	350μl	High-binding, Integrative, Flat bottom	≤3%	Pack of 10plates Case of 200plates
1105-001	320μl	Mid-binding, 8-well strip, Flat bottom	≤5%	Pack of 10plates Case of 200plates
1105-003	350μl	Mid-binding, Integrative, Flat bottom	≤5%	Pack of 10plates Case of 200plates

Further information, visit us at [www.cosmobrand.com](http://www.cosmobrand.com) E-mail: [us.info@cosmobrand.com](mailto:us.info@cosmobrand.com)

1633, Bayshore, Hwy, Burlingame CA. 94010, USA Phone: +1(415)320-2527  
 4, Nanyun 4<sup>th</sup> Road, Science Park, Guangzhou 510663 China Phone: +8620-3221-8258

© 2013 Cosmo Biosciences Inc.

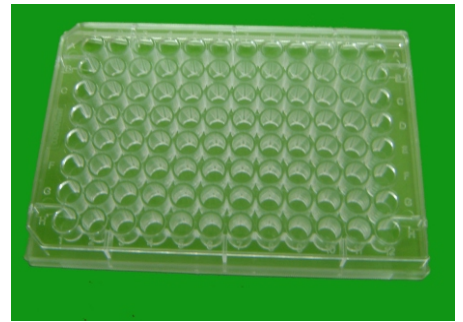
## 96&384-well UV plate

### Features

- Made of super optical UVPolymer
- Superexcellent Optical Assay
- Low background
- No need for expensive and fragile quartz glass plates
- UV transparent to 220 nm-1200nm
- SBS footprint compatibility with automated reader and washer
- Available with bar code tracking
- DNase and RNase free

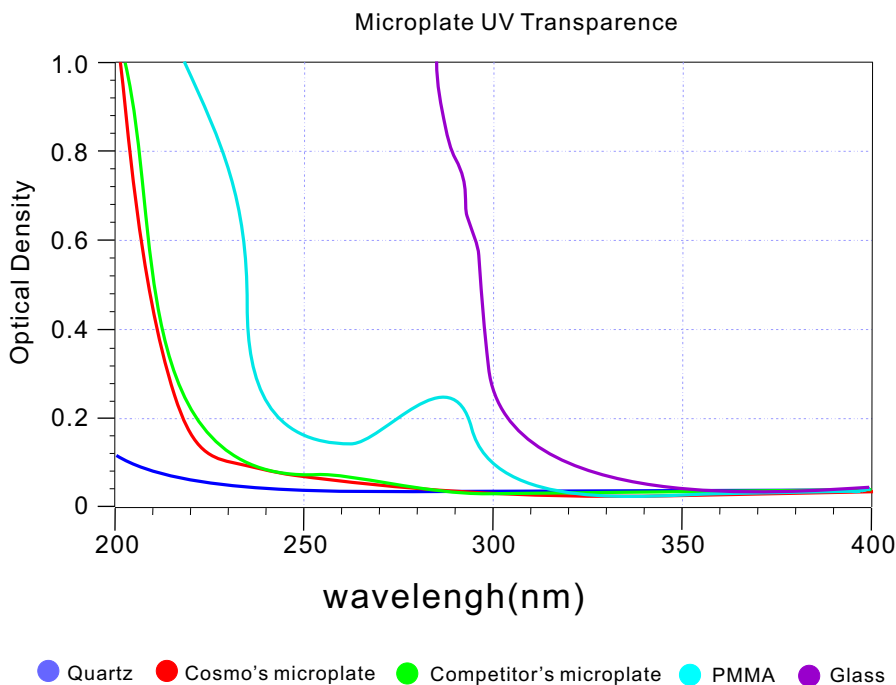
### Applications

- Recommended for measurements of DNA and protein concentrations at 260nm or 280nm, respectively



### Ordering Informations

Cat.No.	Capacity	Description	Sterile	Pack of
2105-096	350µl	96-well, Flat bottom, without lid	Not	Pack of 1plates Case of 40plates
2105-384	120µl	384-well, Flat bottom, without lid	Not	Pack of 1plates Case of 40plates



Note: Optical Density of microplate between 200nm to 400nm

Further information, visit us at [www.cosmobrand.com](http://www.cosmobrand.com) E-mail: [us.info@cosmobrand.com](mailto:us.info@cosmobrand.com)

1633, Bayshore, Hwy, Burlingame CA. 94010, USA

Phone: +1(415)320-2527

4, Nanyun 4<sup>th</sup> Road, Science Park, Guangzhou 510663 China

Phone: +8620-3221-8258

© 2013 Cosmo Biosciences Inc.

## 384-well Microplates

### Features

- Solid, White and Black plate with clear bottom
- Polystyrene/UV polymer bottom for selected
- Unique one-time structure by mold, unbonded
- Unique design eliminate wicking and bubble composition
- Minimum auto-fluorescence
- Low background and cross-talk
- High flatness within 100microns
- SBS standard compatibility with automated equipment
- Can be reading from bottom, top or both
- Available for barcode



### Applications

- Transparent plates, optical analysis in colorimetry
- White plates, maximum signal reflection in luminescence measurement
- Black plates, reducing of background influence in fluorescence measurement
- Cell based assay

### Technical Informations

Outer Dimension	128x86mm
Sterile	Gamma irradiation
Well Shape	Flat Bottom

### Ordering Informations

Cat.No.	Capacity	Description	Sterile	Pack of
2102-305	120µl	Black, transparent bottom With Lid, PS TC treated, Area: 0.12 cm <sup>2</sup> /well	yes	Individually Wrapped Case of 100plates
2102-308	120µl	Black, Solid, Polystyrene, Without Lid Non- treated, Area: 0.12 cm <sup>2</sup> /well	Not	Pack of 5plates Case of 100plates
2102-506	120µl	White, transparent bottom, PS With Lid TC treated, Area: 0.12 cm <sup>2</sup> /well	yes	Individually Wrapped Case of 100plates
2102-508	120µl	White, Solid, Polystyrene, Without Lid Non- treated, Area: 0.12 cm <sup>2</sup> /well	Not	Pack of 5plates Case of 100plates
2102-384B	120µl	Black, UVPolymer bottom, With Lid TC treated, Area: 0.12 cm <sup>2</sup> /well	yes	Individually Wrapped Case of 100plates
2102-384w	120µl	White , UVPolymer bottom, With Lid TC treated, Area: 0.12 cm <sup>2</sup> /well	yes	Individually Wrapped Case of 100plates
2102-318	20µl	Black, Solid, Polystyrene, Without Lid Non-treated, Area: 0.01 cm <sup>2</sup> /well	Not	Pack of 10plates Case of 100plates
2102-518	20µl	White, Solid, Polystyrene, Without Lid Non-treated, Area: 0.01 cm <sup>2</sup> /well	Not	Pack of 10plates Case of 100plates
2105-318	20µl	Black, Solid, Polystyrene, Without Lid Medium-binding, Area: 0.01 cm <sup>2</sup> /well	Not	Pack of 10plates Case of 100plates
2105-518	20µl	White, Solid, Polystyrene, Without Lid Medium-binding, Area: 0.01 cm <sup>2</sup> /well	Not	Pack of 10plates Case of 100plates
2105-306	120µl	Black, Solid, Polystyrene, Without Lid Medium-binding, Area: 0.12 cm <sup>2</sup> /well	Not	Pack of 10plates Case of 100plates
2105-508	120µl	White, Solid, Polystyrene, Without Lid Medium-binding, Area: 0.12 cm <sup>2</sup> /well	Not	Pack of 10plates Case of 100plates

Further information, visit us at [www.cosmobrand.com](http://www.cosmobrand.com) E-mail: [us.info@cosmobrand.com](mailto:us.info@cosmobrand.com)

1633, Bayshore, Hwy, Burlingame CA. 94010, USA Phone: +1(415)320-2527  
4, Nanyun 4<sup>th</sup> Road, Science Park, Guangzhou 510663 China Phone: +8620-3221-8258

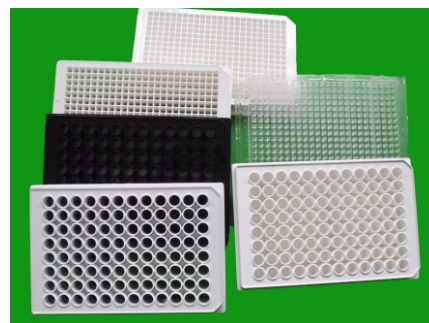
© 2013 Cosmo Biosciences Inc.



## 96-well Microplate

### Features

- White and black plate with clear bottom
- Polystyrene/UV polymer bottom for selected
- Unique one-time structure by mold, unbonded
- Unique design eliminate wicking and bubble composition
- Minimum autofluorescence
- Low background and cross-talk
- High flatness within 100microns
- SBS standard footprint compatibility with automated equipment
- Can be reading from bottom, top or both
- Available for barcode



### Applications

- Transparent plates, optical analysis in colorimetry
- White plates, maximum signal reflection in luminescence measurement
- Black plates, reducing of background influence in fluorescence measurement
- Cell based assay

### Technical Informations

Outer Dimension	128x86mm
Growth Area	0.32 cm <sup>2</sup> /well
Sterile	Gamma irradiation
Well Shape	Flat Bottom

### Ordering Informations

Cat.No.	Capacity	Description	Sterile	Pack of
2105-100	350µl	Black,Solid,without lid ,Non-treated	Not	Pack of 10plates Case of 100plates
2105-102	350µl	Black,Solid,Without lid ,Medium-binding	Not	Pack of 10plates Case of 100plates
2105-200	350µl	White,Solid,Without lid ,Non-treated	Not	Pack of 10plates Case of 100plates
2105-206	350µl	White,Solid,without lid,Medium-binding	Not	Pack of 10plates Case of 100plates
2102-105	350µl	Black, PS transparent bottom,TC treated,With Lid	yes	Individually Wrapped Case of 100plates
2102-205	350µl	White,PS transparent bottom,TC treated,With Lid	yes	Individually Wrapped Case of 100plates
2102-103	350µl	Black,UVPolymer bottom,TC treated,With Lid	yes	Individually Wrapped Case of 100plates
2102-203	350µl	White, UVPolymer bottom, TC treated,With Lid	yes	Individually Wrapped Case of 100plates

- High-Binding: approx. 500ng Mouse IgG/cm<sup>2</sup>
- Medium-Binding: approx. 350ng Mouse IgG/cm<sup>2</sup>

Further information, visit us at [www.cosmobrand.com](http://www.cosmobrand.com) E-mail: [us.info@cosmobrand.com](mailto:us.info@cosmobrand.com)

1633, Bayshore, Hwy, Burlingame CA. 94010, USA Phone: +1(415)320-2527  
4, Nanyun 4<sup>th</sup> Road, Science Park, Guangzhou 510663 China Phone: +8620-3221-8258

© 2013 Cosmo Biosciences Inc.

### 96-well deep well plate

#### Features

- Made of original super clear Polypropylene
- High chemical resistance, e.g., DMSO, Chloroform
- Alpha-numeric grid for well identification
- One-way cut corner for simply orientation
- Available in autoclavable at +121, sample down to -80
- Stackable design for easy storage
- SBS standard compatibility with automated equipment
- Available with bar code tracking



#### Applications

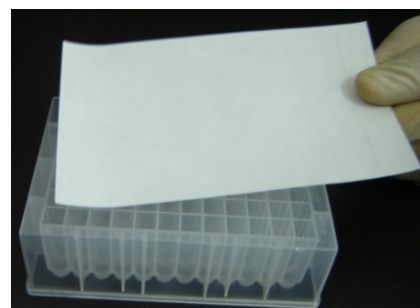
- High throughput screening
- Cell and tissue culture
- Serial dilutions
- Reagent transfer
- Sample storage
- Test requiring a mother plate

Cat.No.	Capacity ml/well	Description	Sterile	Pack of
1109-001	1.2ml	PP, Round well, Super clear,	Non-sterile	Pack of 10 plates Case of 100 plates
1109-003	2.2ml	PP, Square well, Super clear	Non-sterile	Pack of 10 plates Case of 100 plates

### Seal film

#### Features

- Clear sealing for microplate
- Minimal evaporation, avoid cross-well contamination
- Easy to handle, Non stick to gloves
- With pressure-sensitive silicone-based adhesive
- Suitable for use between -70 and 110°C



Cat.No.	Dimension	Description	Sterile	Pack of
1107-001	141.5 x 79mm	Optical, Sealing all micrplates	Non-sterile	Pack of 300 Case of 3,000
1107-011	141.5 x 79mm	Optical, Sealing all micrplates	Sterile	Pack of 200 Case of 2,000

Further information, visit us at [www.cosmobrand.com](http://www.cosmobrand.com) E-mail: [us.info@cosmobrand.com](mailto:us.info@cosmobrand.com)

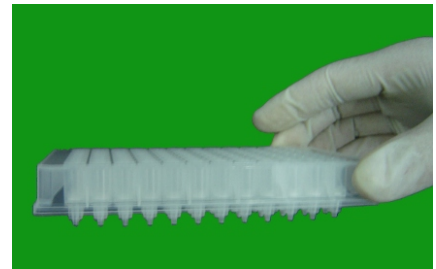
1633, Bayshore, Hwy, Burlingame CA. 94010, USA Phone: +1(415)320-2527  
4, Nanyun 4<sup>th</sup> Road, Science Park, Guangzhou 510663 China Phone: +8620-3221-8258

© 2013 Cosmo Biosciences Inc.

### 96-well filter plate

#### Features

- Made of original super clear Polypropylene
- High chemical stability and high binding capacity
- Alpha-numeric grid for well identification
- One-way cut corner for simply orientation
- Greater flexibility using either centrifugation or vacuum
- SBS standard compatibility with automated equipment
- Available with bar code tracking



#### Applications

- High throughput screening
- Plasmid/Genomic Purification
- Proteomics
- Purification Application

#### Technical Information

Dimension	128x86mm
Material	Polypropylene

Cat.No.	Capacity ML/well	Description	Pack of
1109-006	0.3ml	Short drop,1.0 glass fibre,natural Max.vol.280ul,Mini-Vol.50ul	Pack of 10plates Case of 100plates
1109-008	1.0ml	Long drop,1.0 glass fibre,natural Max.vol.800ul,Mini.vol.50ul	Pack of 10plates Case of 100plates

\* Available customized membrane and pore size

### Vacuum Manifold

#### Applications

- Solid Phase Extraction
- Plasmid/Genomic Purification
- Magnetic Bead Aaasy
- Proteomics
- Purification Application



Cat.No.	Material	Description	Pack of
0807-100	Polypropylene	Compatible with all SBS footprint microplates, Dimension:145x100x65mm	Pack of 1set Case of 10sets

Further information, visit us at [www.cosmobrand.com](http://www.cosmobrand.com) E-mail: [us.info@cosmobrand.com](mailto:us.info@cosmobrand.com)

1633, Bayshore, Hwy, Burlingame CA. 94010, USA Phone: +1(415)320-2527  
4, Nanyun 4<sup>th</sup> Road, Science Park, Guangzhou 510663 China Phone: +8620-3221-8258

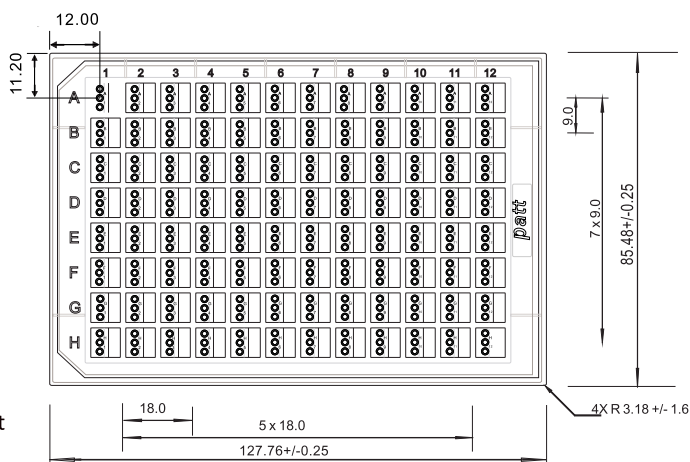
© 2013 Cosmo Biosciences Inc.



### Protein Crystallization Microplates

#### Features

- Made of original optical UVPolymer
- Minimum autofluorescence
- Alpha-numeric grid for well identification
- 96reservoirs with 2 or 3 drop well
- 5 nl-4µl drop size for selecting
- Easy to retrieve crystal
- Large sealing surface
- Stackable design,High flatness less than 100µm
- SBS standard footprint work with all automatic equipment
- Available with bar code tracking



#### Applications

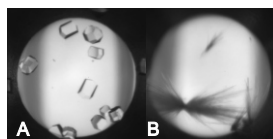


Image of visible light Microscopy

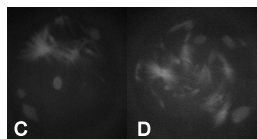
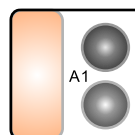
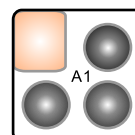


Image Under UVF Microscopy

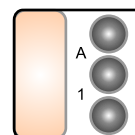
#### Drop format



2round drop well  
5µl(max)x2



3round drop well  
5µl(max)x3



3flat drop well  
2µl(max)x3

#### Ordering Infomations

Cat.No.	Capacity Per Drop	Description	Pack of
220-521	10nl-5µl	96well with 2round drops well, UVPolymer, 50-100 µl of reservior	Pack of 10plates Case of 200plates
220-520	10nl-5µl	96well with 2round drops well, Polystyrene, 50-100 µl of reservior	Pack of 10plates Case of 200plates
230-531	10nl-5µl	96well with 3round drops well, UVPolymer, 20-40 µl of reservior	Pack of 10plates Case of 200plates
230-530	10nl-5µl	96well with 3round drops well, Polystyrene, 20-40 µl of reservior	Pack of 10plates Case of 200plates
230-431	5nl-2µl	96well with 3flat drops well, UVPolymer, 50-200 µl of reservior	Pack of 10plates Case of 200plates
230-430	5nl-2µl	96well with 3flat drops well, Polystyrene, 50-200 µl of reservior	Pack of 10plates Case of 200plates

Further information, visit us at [www.cosmobrand.com](http://www.cosmobrand.com) E-mail: [us.info@cosmobrand.com](mailto:us.info@cosmobrand.com)

1633, Bayshore, Hwy, Burlingame CA. 94010, USA

Phone: +1(415)320-2527

4, Nanyun 4<sup>th</sup> Road, Science Park, Guangzhou 510663 China

Phone: +8620-3221-8258

© 2013 Cosmo Biosciences Inc.

