

# B&L BIOTECH Product Catalog



## WHERE INNOVATION MEETS EXCELLENCE



B&L Biotech was established by several dentists. These dentists, who specialized in endodontics, shared a common goal of developing products with innovation and excellence.

With this view, B&L Biotech had actively invested in the R&D field, so introduced the first cordless heat source system and gutta percha delivery system, known respectively as the B&L Alpha 2 and the B&L Beta.

And B&L Biotech introduced other products such as micro-projection ultrasonic tips and surgical instruments after years of technology development.

B&L Biotech is one of the fastest rising companies in the global dental market and currently services over 40 countries. B&L Biotech opened its US branch near Philadelphia in 2010 and relocated it to Northern Virginia in 2014.

Now, B&L Biotech continues to strive to develop more innovative products and to expand and diversify its products line.

# Table of Contents

## **Cordless Obturation Devices**

· SuperEndo - $\alpha^2$ .....	2
· Baek's Plugger .....	3
· SuperEndo - $\beta / \beta$ - Mini .....	4
· Needle & GP .....	5
· BL-S Kondenser .....	6

## **Ultrasonic Tips**

· BL-TIP .....	7
· CK TIP .....	8
· VIBRAPOST .....	8
· IS TIP .....	9
· JETIP .....	10

## **Microsurgical Instruments**

· JETIP Instrument .....	11
· Micro Mirror .....	13
· JETIP Instrument Suture set .....	13

## **Retractor**

· LeeTrac .....	14
· KimTrac .....	15

## **Endodontic Accessories**

· B&L GP Gauge & Cutter .....	16
· Endo B/Endo M/Endo R/Endo M&R .....	16

## **Digital Endodontic Ruler**

· Digit R .....	17
-----------------	----

## **Cordless Curing Light**

· B&Lite S .....	18
------------------	----

## **Vibrating Hand Instrument**

· COMO .....	19
--------------	----

## **Composite Resin Heating Dispenser**

· POMO .....	19
--------------	----

## **Educational Dental Model**

· PRACTEETH .....	20
-------------------	----

## **Tooth model with root for RCT practice**

· A-Chi .....	20
---------------	----

Cordless Heat Source for Optimal Warm Vertical Condensation

# SuperEndo- $\alpha^2$ ®



## Cordless and Ergonomic

- Provides easy access from various directions
- Reduces fatigue on hand and wrist
- Hexagonal shape on the connecting joint to prevent rotation of the plugger

## Fast Temperature Rising & Accurate Heating

- Reaches the set temperature in a short time after activating the button
- Works at accurate set temperature

## Hours of use

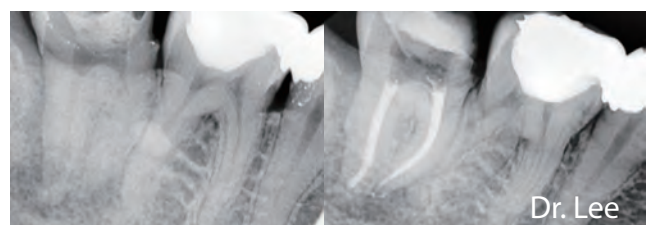
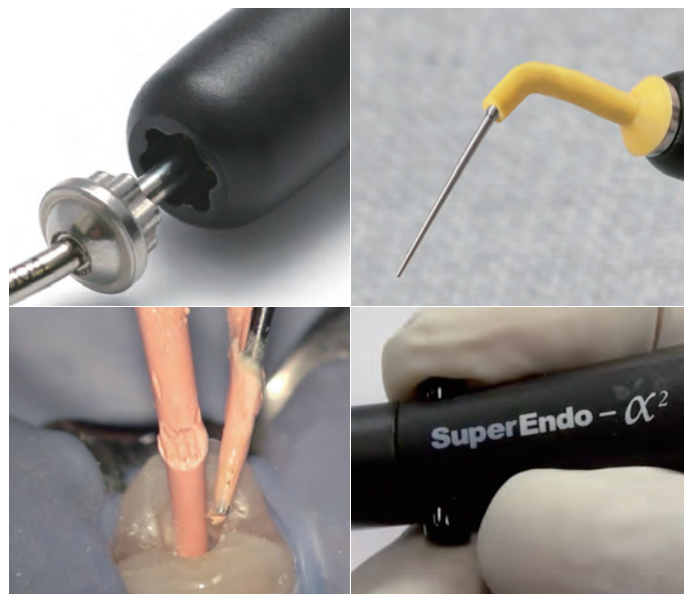
- Able to use more than 1 hour continuously on single charge
- Able to use more than 1 week in intermittent use

## Components

- Alpha Units : main device(BAMB-Black, BAMW-White)  
charging console(BACCB-Black, BACCW-White)
- Alpha Accessories : battery(BAB), power cord(BPC), AC adapter(BAA),  
AC adapter antistatic cap(BAACB-Black, BAACW-White),  
plugger protector sleeve(BPPS, 10EA)

## Starter Kit

- SuperEndo- $\alpha^2$  with 3 pluggers (#55/.06, #55/.08, #55/.10)
- Item code: ASKB(Black), ASKW(White)




# Baek's Plugger

- Total 13 items: 10 types of pluggers, 2 types of spreaders, and a hot testing tip
- Wide varieties to choose according to root canal size
- Hot testing tip: used for heat test to determine the vitality of the pulp




#30/.04  
Blue  
(BP3004) 




#35/.04  
Blue  
(BP3504) 



#40/.04  
White  
(BP4004) 



#45/.04  
Yellow  
(BP4504) 



#50/.04  
Yellow  
(BP5004) 




#55/.06  
Red  
(BP5506) 




#55/.08  
Red  
(BP5508) 



#55/.08 Long  
Red  
(BP5508L) 




#55/.10  
Green  
(BP5510) 




#60/.12  
Green  
(BP6012) 



Spreader/  
Narrow  
Black  
(SPRDN) 



Spreader/  
Standard  
Black  
(SPRDS) 



Hot Testing Tip  
(HTT)





Cordless Gutta Percha Heating and Delivery System for Optimal Backfill

# Beta Mini®

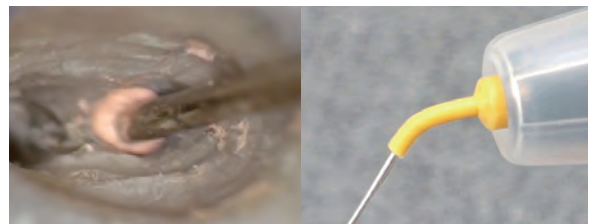
# SuperEndo-β®

*Smaller size, Greater convenience*



## Cordless and Ergonomic

- Accessible from various directions
- Reduces fatigue on hand and wrist
- 360-degree swivel needle for easy access



## Safety Feature

- Includes thermal protector to prevent accidental burns from a hot needle

## Fast Temperature Rising & Accurate heating

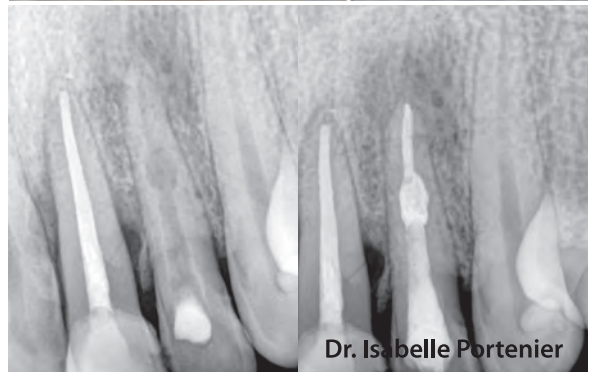
- Reaches the set temperature in a short time after activating the button
- Backfills with heated Gutta Percha at the accurate set temperature

## Components

- Beta Units : main device(BBMB-Black, BMW-White)  
charging console(BBCCB-Black, BBCCW-White)  
thermal protector(BTP, 3EA), plunger(BPAN), silicone cover(BSC)
- Beta Mini Units : main device(EBMB-Black, EBMW-White)  
charging console(EBCCB-Black, EBCCW-White)  
thermal protector(ETP, 3EA), plunger(EPA), silicone cover(ESC)
- Compatible Accessories : battery(BBB), power cord(BPC), AC adapter(BAA),  
AC adapter antistatic cap(BAACB-Black, BAACW-White),  
cleaning brush(BCB, 2EA), needle bender/wrench(BMT),  
needle protector sleeve(BNPS, 10EA)

## Starter Kit

- SuperEndo-β or Beta Mini with needle pack(20G/24mm 2EA, 23G/24mm 4EA, 25G/24mm 2EA) and 1 pack of GP pellet(BGPREG)
- Item code: BSKB(β-black), BSKW(β-white), ESKB(Mini-black), ESKW(Mini-white)



Accessories for SuperEndo-β, Beta Mini

# Needle



Needles for SuperEndo-β, Beta Mini

Gauge	Length	Item Code
20 G	22 mm	BSN2220
20 G	24 mm	BSN2420
20 G	28 mm	BSN2820
20 G	50 mm	BSN5020 (VET)
23 G	21 mm	BSN2123
23 G	24 mm	BSN2423
23 G	28 mm	BSN2823
25 G	22 mm	BSN2225
25 G	24 mm	BSN2425
25 G	26 mm	BSN2625

Multibending Needles for SuperEndo-β, Beta Mini

Gauge	Length	Diameter	Item Code
20 G	24 mm	0.85 mm	BMN2420
23 G	24 mm	0.64 mm	BMN2423
25 G	24 mm	0.54 mm	BMN2425



Needle Bender/Wrench (BMT)

**\* CAUTION!** It is recommended to use a dedicated bender and bend at least 5mm away from the connecting site.

Accessories for SuperEndo-β / Beta Mini

# Gutta Percha Pellet



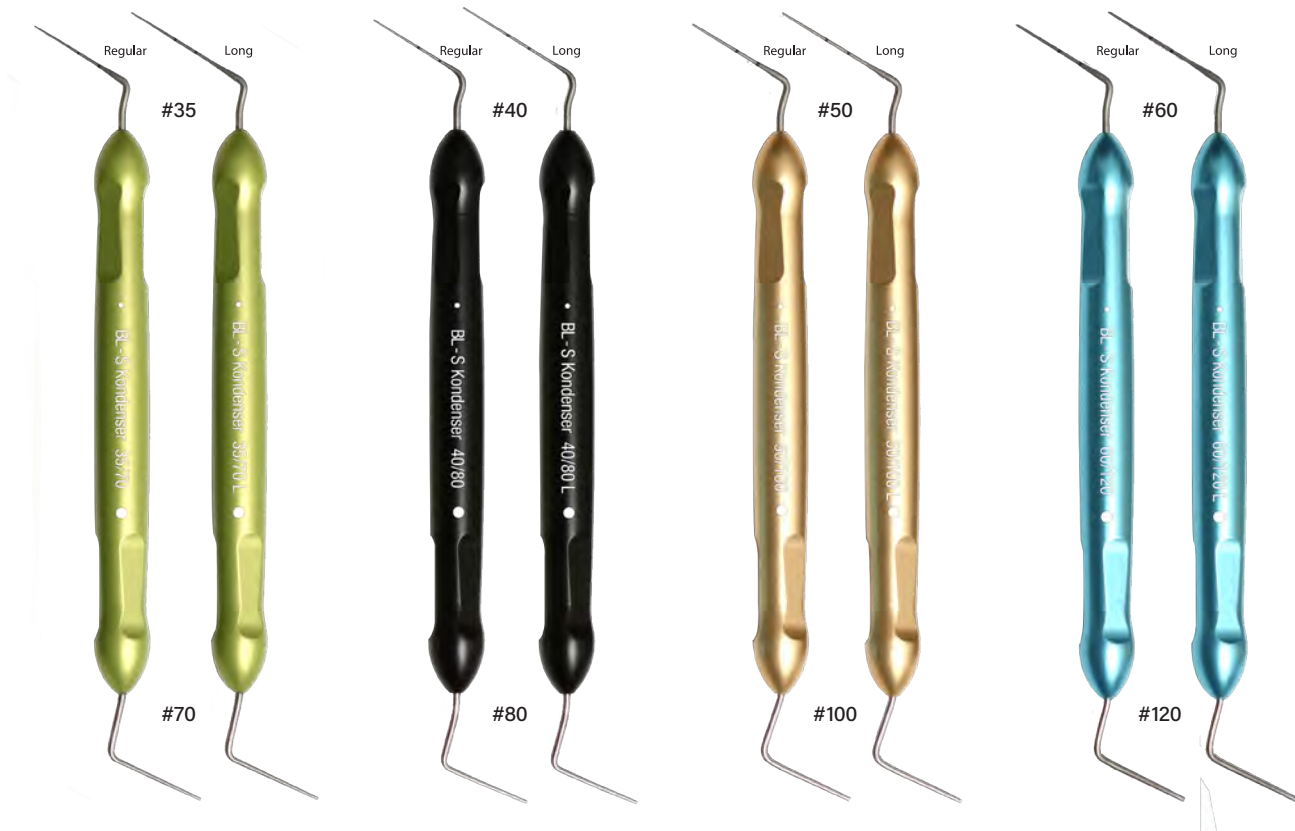
(100EA/PKG)

Gutta Percha Pellets for SuperEndo-β, Beta Mini

Type	Item Code
Soft	BGPSOFT
Regular	BGPREG
Hard	BGPHARD

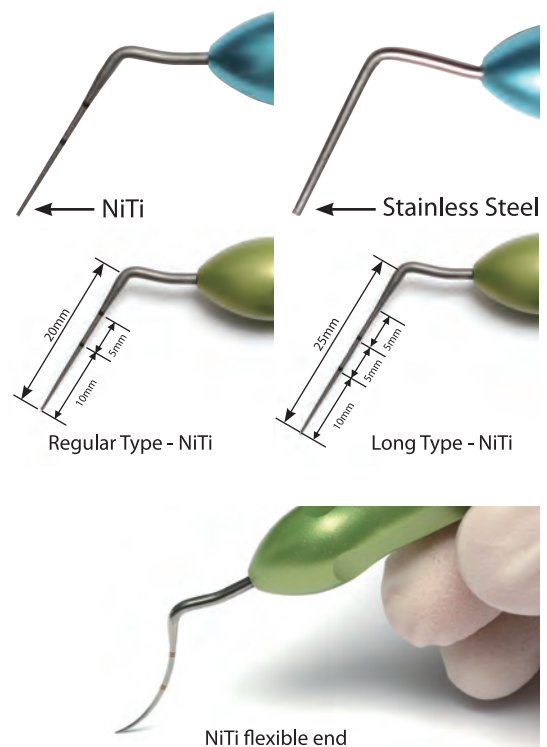
# Condensation of Obturation Material

## BL-S Kondenser



### Features

- Consists of flexible end of nickel titanium and rigid end of stainless steel
- 35/70, 40/80, 50/100, and 60/120 individually or in a full set of 4
- Color-coded handles by size, allowing faster selection of the desired condenser
- Two types of length : regular and long (with longer NiTi side)
  - The stainless steel sides are all the same length in both regular and long types.



Color of Handle	Item Code	
	Regular	Long
Green	BCON35	BCON35L
Black	BCON40	BCON40L
Gold (yellow)	BCON50	BCON50L
Blue	BCON60	BCON60L
-	BCONSET	BCONSETL



## Ultrasonic Tip for Endodontic Access

# BL-TIP®

### Purpose

- Used to remove pulp stones or calcified dentin to access the root canal

### Improved Durability

- Made of all-in-one with abrasive micro-projections
- Not reduce in cutting efficiency caused by the wear of the diamond coating

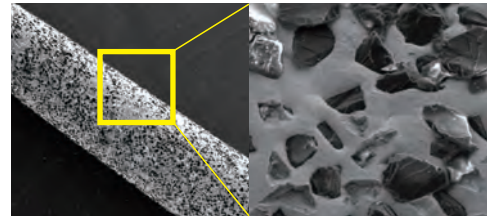
### Versatility

- 3 tips with different thicknesses and lengths to select

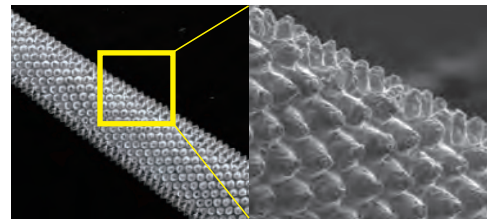
### Efficiency

- Works simultaneously from the end and sides of the tip, which enables to remove efficiently

### Comparison of SEM images



Conventional diamond coated tip



Fine processing BL-TIP with micro-projections

Product	Features of Tip	Magnified Image (x50)	Characteristics
BL-1	<p>0,5mm 16mm ( projection size : 100µm )</p>		<ul style="list-style-type: none"> <li>Pointed shape</li> <li>Useful for finding the root canal orifice such as MB2 canal</li> </ul>
BL-3	<p>0,5mm 16mm ( projection size : 100µm )</p>		<ul style="list-style-type: none"> <li>More blunt than BL-1</li> <li>Useful for gaining straight access to the orifice by gross removing canal obstructions effectively</li> </ul>
BL-5	<p>0,3mm 21mm ( projection size : 50µm )</p>		<ul style="list-style-type: none"> <li>Thinner and longer than BL-1 &amp; BL-3</li> <li>Applicable inside the root canal</li> <li>Useful for creating the space to insert a file</li> </ul>

Type of Scaler	Product	Recommended Power Level
SATELEC®	BL-1-A, BL-3-A	Under 30% of the maximum
	BL-5-A	Under 20% of the maximum
EMS®	BL-1-E, BL-3-E	Under 20% of the maximum
	BL-5-E	Under 10% of the maximum

### Item Code for Starter Kit

- BLSKA(Satelec): BL1A, BL3A, and BL5A
- BLSKE(EMS): BL1E, BL3E, and BL5E

※ CAUTION! The tip may break if used at a higher power than recommended power level.

## Ultrasonic Tip for Troughing & Irrigation

# CKTIP



CK Tip  
(CK1E, CK2E, CK1A, CK2A)



CK File  
(CKF20, 10EA)



CK Needle  
(CKN, 10EA)

Type of Scaler	Product	Angle
SATELEC®	CK1A	120°
	CK2A	90°
EMS®	CK1E	120°
	CK2E	90°

### CK File for Irrigation

- Used by combining #20 CK file to CK tip
- Improves the irrigation effect by generating acoustic streaming
- Performs in the root canal filled with irrigation solution, without touching the canal walls (PUI, Passive Ultrasonic Irrigation)
- Recommended power level: under 10% of the maximum



### CK Needle for Troughing

- Used by combining CK needle to CK tip
- Creates the fine space near the post and separated file by removing the surrounding dentin
- Easy to remove the post when using CK needle followed by Vibrapost



## Ultrasonic Tip for Post Removal

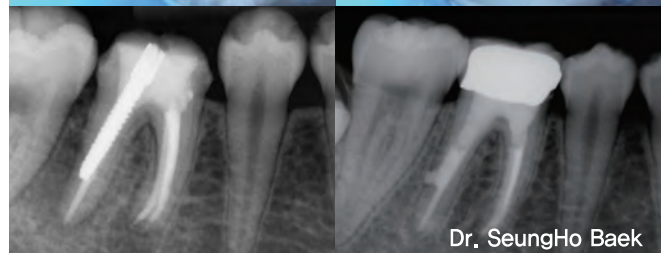
# VIBRAPOST



- Used for removing posts from a root canal
- Acts with the V-shaped notch engaging the post
- Removes posts efficiently by constant delivery of ultrasonic energy without any loss

Type of Scaler	Product	Recommended Power Level
SATELEC®	VPA	Under 80% of the maximum
EMS®	VPE	

※CAUTION! In order to avoid potential damage to the PDL from excessive heat, it is recommended to use it with water and refrain from performing for more than 15 seconds at a time.



# Implant Scaler Tip

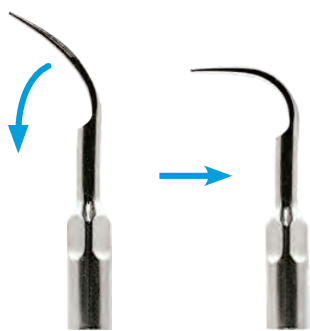
## ISTIP®



### Metallic Implant Scaler Tip

- Provides more efficient scaling than other plastic or titanium scaler for the implant
- Removes dental plaque, calculus, and excess cement around the implant with minimal scratches
- Used for preventing and treating peri-implantitis
- Ideal for the maintenance care of dental implant

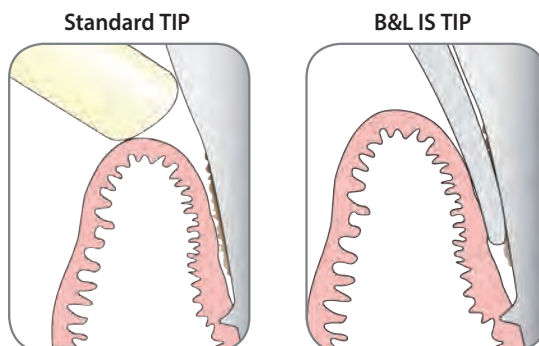
Type of Scaler	Product
SATELEC®	STS5A / STS5A3(set of 3) / STS5A5(set of 5)
EMS®	STS5E / STS5E3(set of 3) / STS5E5(set of 5)



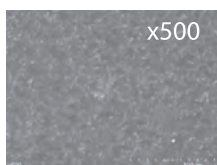
- Made from soft metal, bendable into any shape as desired



- Easy access to hard-to-reach distal surface



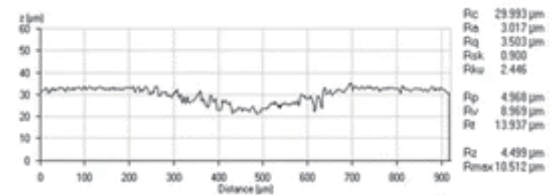
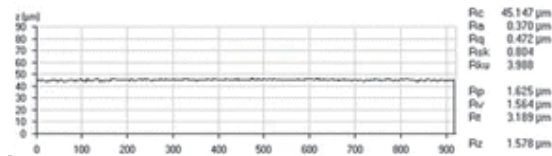
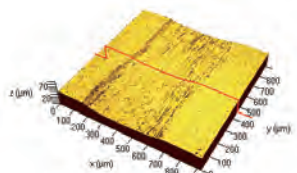
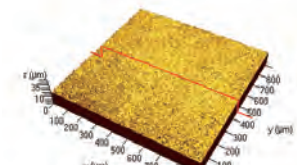
- Thin tip end for easy access to the gingival sulcus



B&L IS Tip



Conventional SS tip



- SEM & Confocal laser microscopic images comparing the roughness of Ti disc surface after applying conventional SS tip and IS tip (Chun KA et al, BMC Oral Health 2017)

### Ultrasonic Tip Accessories



Wrench (WR01)



Tip Valet (TVALET)

# Ultrasonic Tip for Microsurgery

# JETIP®

### Purpose

- Used for root-end preparation during apical microsurgery

### Improved Durability

- Made of all-in-one with abrasive micro-projections
- Not reduce in cutting efficiency caused by the wear of the diamond coating

### Efficiency

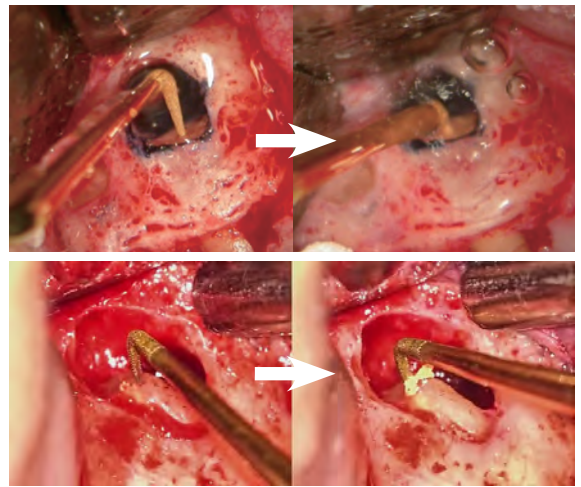
- Removes GP efficiently without unnecessary removal of dentin

### Bending Jig

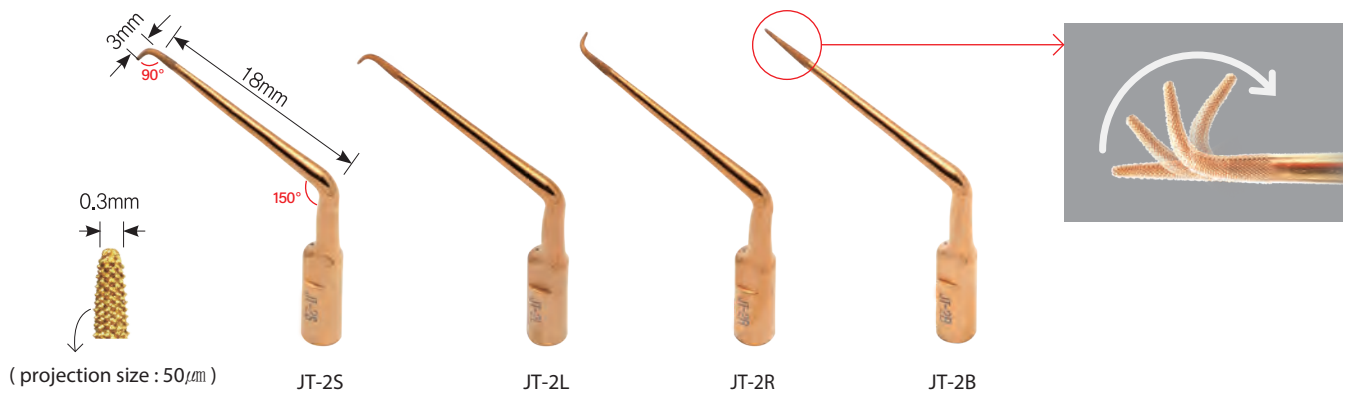
- Includes 5 holes of 3,4,5,6,7mm in depth
- Used to bend JT2B tip to the desired depth and direction
- Can be used 2 to 4 times per hole
- Does not damage the micro-projections of the tip during bending

### Item Code for Full Set

- JT2FA(Satelec): JT2SA, JT2LA, JT2RA, JT2BA(2EA), and JTBJ
- JT2FE(EMS): JT2SE, JT2LE, JT2RE, JT2BE(2EA), and JTBJ



Bending Jig (JTBJ)



Product	Features of Tip	Areas of Use
JT-2S	Bent downward at the working end	Incisors, canine and premolars
JT-2L	Bent to the left at the working end	Upper right & lower left premolars and molars
JT-2R	Bent to the right at the working end	Upper left & lower right premolars and molars
JT-2B	Bendable	-

Type of Scaler	Product	Recommended Power Level
SATELEC®	JT-2S-A, JT-2L-A, JT-2R-A, JT-2B-A	Under 20% of the maximum
EMS®	JT-2S-E, JT-2L-E, JT-2R-E, JT-2B-E	Under 10% of the maximum

※ CAUTION! The tip may break if used at a higher power than recommended power level.

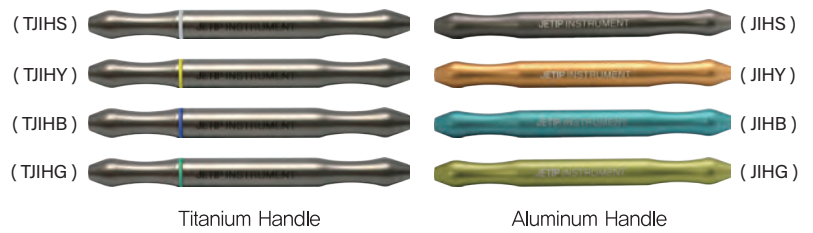


Microsurgical Instruments

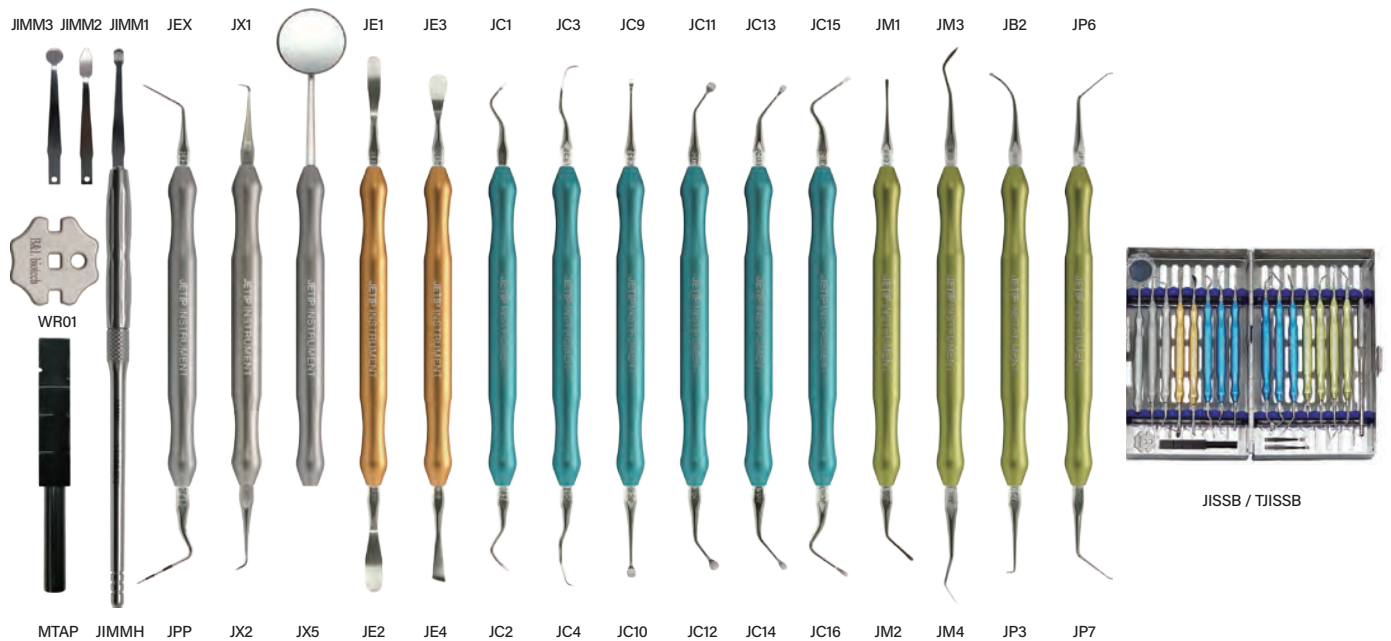
# JETIP Instrument

## JETIP Microsurgical Instrument

- Selectable between aluminum and titanium handle
- Color coded by procedural steps
- Easy to organize and recognize instruments according to colors

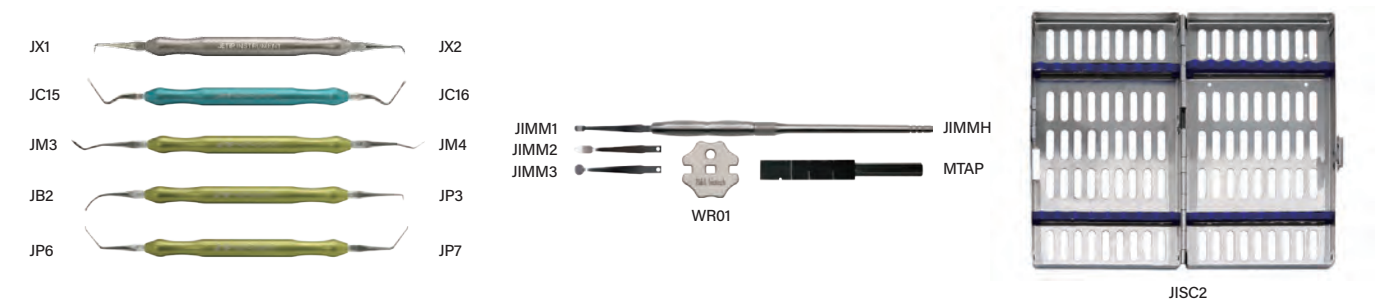


## Basic Set : JISSB(aluminum handle) / TJISSB(titanium handle)



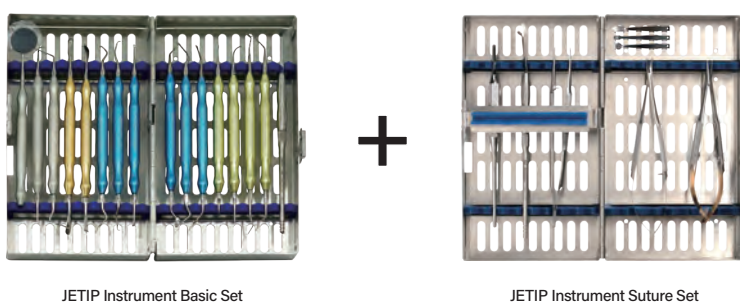
## Essential Set : JISSE(aluminum handle) / TJISSE(titanium handle)

Composed of frequently used instruments among to the basic set



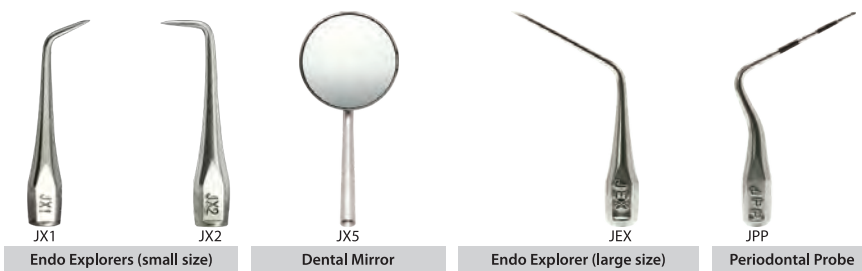
## Deluxe Set : JISSD (aluminum handle) / TJISSD (titanium handle)

Consists of the basic set and JETIP instrument suture set





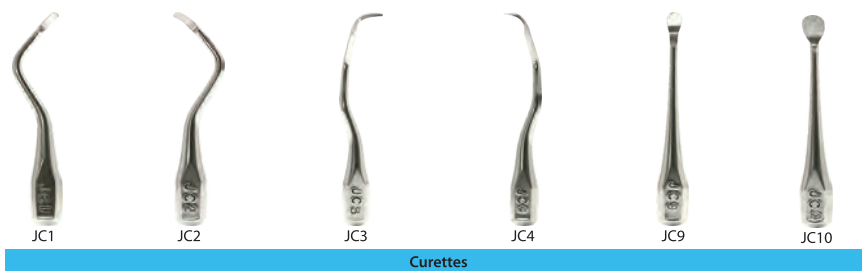
# Tip of JETIP Instrument



**Silver**  
( for examination and diagnosis )



**Gold**  
( for flap elevation )



**Blue**  
( for curettage )

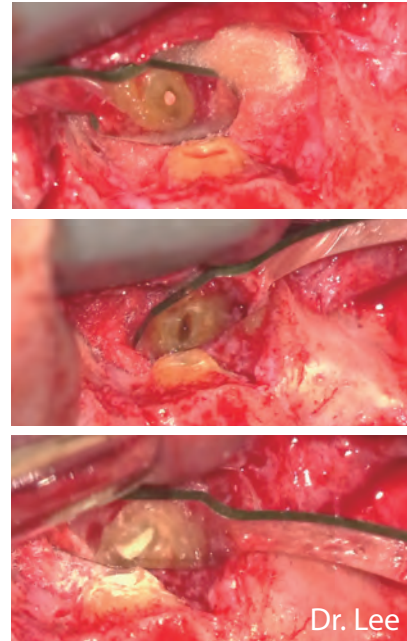


**Green**  
( for retrograde filling )



Microsurgical Instruments

# Micro Mirror



Microsurgical Instruments

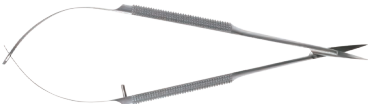
# JETIP Instrument Suture Set

## Suture Set for Microsurgery

- Composed of surgical instruments used for apical microsurgery
- Includes Castroviejo-typed instruments for the microsurgery
- Easy to store and sterilize with a dedicated cassette
- Available in addition to conventional surgical sets



Castroviejo needle holder (JICV)



Castroviejo scissors (JIMS)



Castroviejo tissue forcep (JITF)



Blade Handle (JIBH)



Micro mirror handle (JIMMH)



JISS

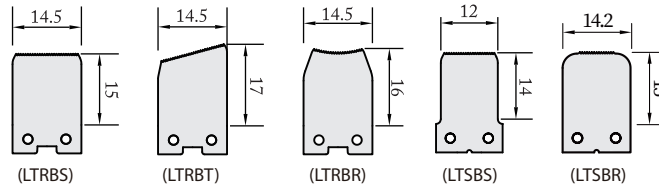
## Reflective Retractor for Surgery

# LeeTrac<sup>®</sup>

### Wide type



Wide handle (LRTNH)

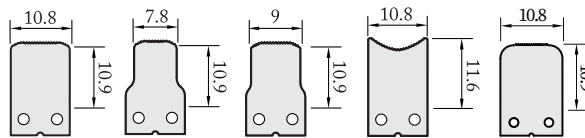


Exchangeable blade

### Narrow type



Narrow handle (LRNNH)



Exchangeable blade

### Blade with Reflective Surface

- Able to view the surgical area through the blade with reflective surface

### Exchangeable Blade with Serrated Edge

- Various blades can be selectively used by the contour of the cortical plate of the surgical site.
- The end of blade is serrated to prevent slipping from the cortical plate.

### Ergonomic Handle

- Designed to reduce fatigue after holding the handle for a long period of time.

### Leetrac Wing

- Provides wider visibility and easier accessibility of the surgical site by additional flap elevation
- Made from soft material to minimize mucosal tears

### Leetrac Set

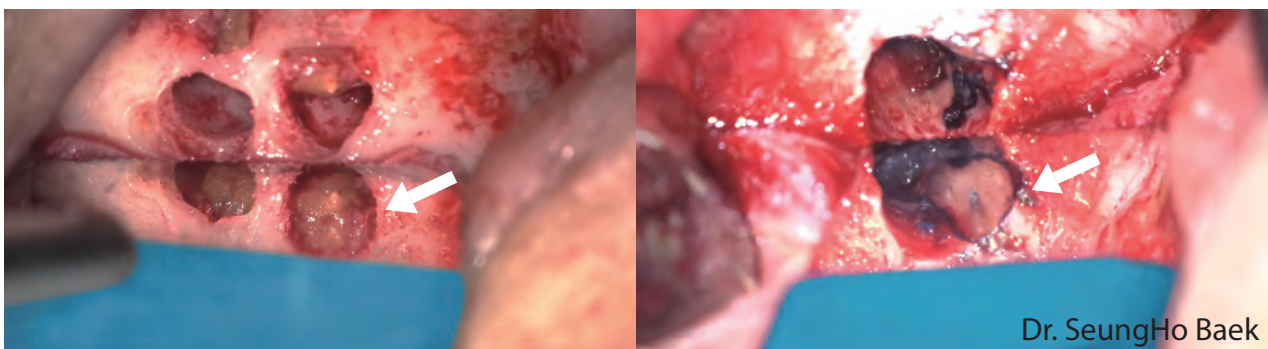
- LTRNS(wide): handle(LRTNH), blade(LTRBS, LTRBT), autoclaving cap(LTRSS), wing(LTRWT)
- LTNNS(narrow): handle(LRNNH), blade(LTNBS, LTNBN), autoclaving cap(LTNSS), wing(LTNWT)



Autoclaving cap (LTRSS/LTNSS)



Leetrac wing (LTRWT/LTNWT)



Dr. SeungHo Baek

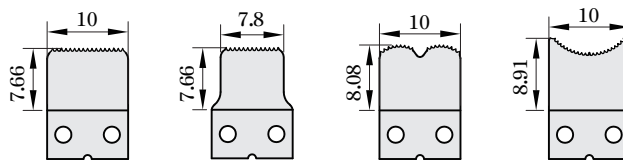
\* The image of the root end after apicoectomy is visible on the surface of the Leetrac's blade. (acts as a micromirror)

## Bendable Retractor for Surgery

# KimTrac®



**Handle (KTNNH)**



**Blade**

Ni-Ti type	KTN1N	KTN2N	KTN3N	KTN4N
SUS type	KTN1S	KTN2S	KTN3S	KTN4S

### Blades Made of Two Materials

- Capable of choosing between SUS type and NiTi type
- After bending the Niti blades, it returns to its original shape after it has been autoclaved.

### Exchangeable Blade with Serrated Edge

- Various blades can be selectively used by the contour of the cortical plate of the surgical site.
- End of blade is serrated to prevent slipping from the cortical plate.

### Ergonomic Handle

- Designed to reduce fatigue after holding the handle for a long period of time.

### Kimtrac Wing

- Provides wider visibility and easier accessibility of the surgical site by additional flap elevation
- Made from soft material to minimize mucosal tears

### Kimtrac Bending Jig

- Used for bending of NiTi type blades to desired angle

### Kimtrac Set

- KTNNS(NiTi): handle(KTNNH), blade(KTN1N), autoclaving cap(LTNSS), wing(LTNWT), bending jig(KBJ)
- KTNSS(SUS): handle(KTNNH), blade(KTN1S), autoclaving cap(LTNSS), wing(LTNWT), bending jig(KBJ)



Autoclaving cap (LTNSS)



Kimtrac wing (LTNWT)



Kimtrac bending jig (KBJ)



Endodontic Accessories

# B&L GP Gauge & Cutter™



\* Autoclavable

### 2-in-1 System with Gauging and Cutting of GP cone

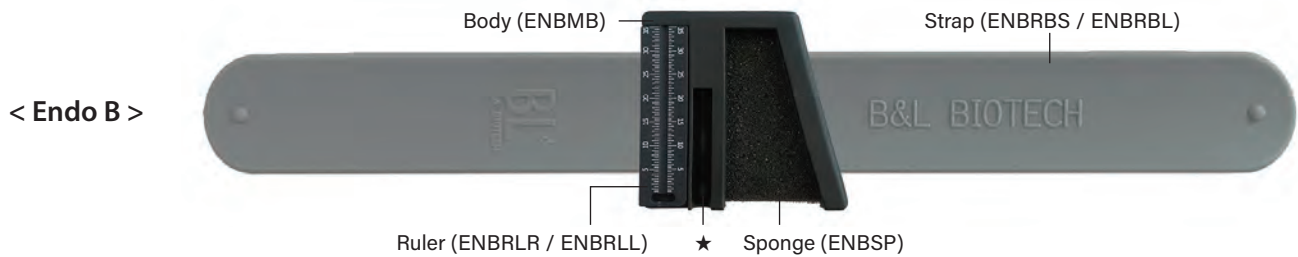
- Able to measure the diameter of the GP cone and cut it to the ISO - specified size as desired

### Accurate Gauging and Clean Cutting

- Corrects inaccurate size of commercial GP cones that allow errors
- Cuts GP cones cleanly and without irregularities
- Contributes to apical sealing using the master cone of accurate diameter

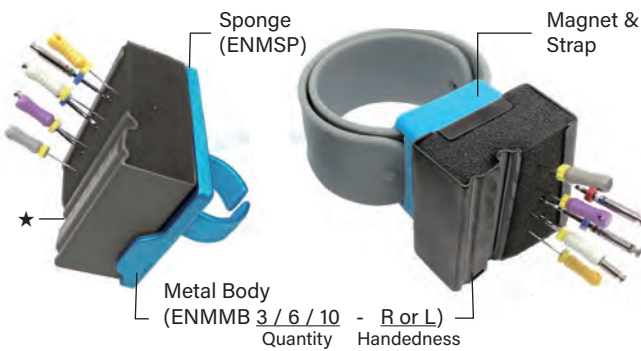
Endodontic Accessories

# Endo B™ / Endo M™ / Endo R™ / Endo M&R™



< Endo B >

< Endo M >



### Endodontic Ruler & File Organizer

- Able to organize and hold files during endodontic treatment
- Provides the ruler to measure the length
- Includes a groove for lubricants (★)
- Endo B: silicone body including attachable ruler + strap
- Endo M: DLC coated metal body + magnet & strap
- Endo R: DLC coated metal body + magnetic ring
- Endo M&R: DLC coated metal body + magnet & strap + magnetic ring

**Endo B** (Files are not included)

Ruler \ Strap	Short(24cm)	Long(28cm)
Right - handed	ENBSSR	ENBSLR
Left - handed	ENBSSL	ENBSLL

**Endo M**

Magnet \ Strap	Short(24cm)	Long(28cm)
Gray	ENMSSG-R/L	ENMSLG-R/L
Blue	ENMSSB-R/L	ENMSLB-R/L

**Endo R**

Color \ Size	Small (Int. Diameter : 16.5mm)	Medium (Int. Diameter : 18mm)	Large (Int. Diameter : 21mm)
Gray	ENMRSG-R/L	ENMRMG-R/L	ENMRLG-R/L
Blue	ENMRSB-R/L	ENMRMB-R/L	ENMRLB-R/L







**Endo M&R** ex) EMNSSGRSG-R: ENM SSG EndoM RSG EndoR - R Right-handed

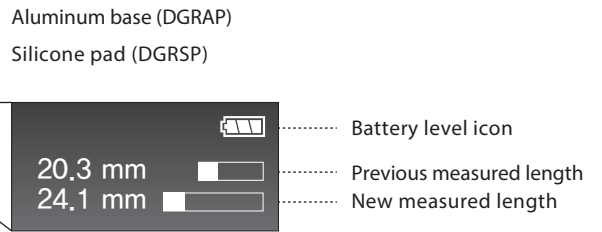


# Digital Endodontic Ruler

## Digit R™



-  Quick Measurement
-  Digital Display
-  Automatic Power Off
-  Memory Function
-  Powered by AAAA Battery
-  Beep Notification



- Size : 106mm (L) X 73mm (W) X 103mm (H)
- Weight : 195g (excluding batteries)

### Characteristics

- Measures the length automatically and shows it as a digital number
- Measures the length in 0.1mm scale
- Able to measure the length of files, GP cones, and various instruments
- The curvature of files within 15 degrees can be calibrated.
- Up to 10 measuring lengths can be stored (memory function).
- The aluminum base and silicone pad can be separated and sterilized.
- Powered by 4 AA batteries or by connecting external power supply using USB port

### Advantages

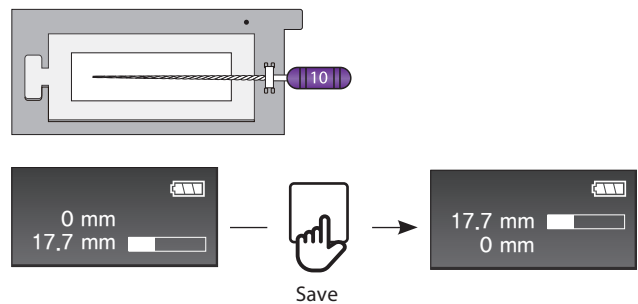
- Less fatigue to the eyes due to not needing to read the scale of the ruler
- Resolution of inaccuracies in reading analogue ruler scale
- Easy to read the length through the display
- Easy to set as the previous measured length

### Clinical Application

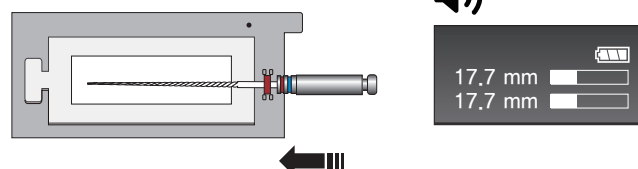
- No need to read the ruler when measuring the WL
- Easy to set the length of following files to the WL

### How to Use

#### <Working length determination>



#### <Root canal enlargement / shaping>



The length of the file to WL is set by moving the file until matching lengths of two bars or until notification of a long beep sound.

# Cordless Curing Light B&Lite S®



## High and Constant Light Output

- Constant light output regardless of battery power is maintained.

## Replaceable and Rotatable Probe

- The light probe can rotate 360 degrees.
- Only the light probe can be replaced when the LED lifecycle is over.

## Lithium Ion Battery

- Removable lithium ion batteries are used.

## Item Code for B&Lite S and Accessories

- B&Lite S kit: CL-SBL
- Accessories: light probe(CL-SLP), light probe thermal guard(CL-SLG), battery pack(CL-GBP), charging stand(CL-GCS), charging stand base(CL-GCG), AC adapter(CL-GPA), light shield(CL-GAS)

## Accessibility

- Small head size allows easy access to the mouth and delivers the light at the proper position and angle.



## Uniformity and Concentration of Light



Excellent focus and uniformity

**B&Lite S**



Insufficient uniformity

A company



Blurred focus

B company



Blurred focus

C company

## Mode Description

Mode	Display	Characteristics	Output (mW/cm <sup>2</sup> )	Time (sec)
General Composite Filling Mode		For curing of general composite resin	800	5 / 10 / 15 / 20
Fast Mode		For curing of pediatric composite resin	1200	3 / 6 / 9 / 12
Soft Start Mode		Gradual increase of output from 0 to 1200 (reaching to 1200 within 3 secs)	0 ~ 1200	3 / 6 / 9 / 12
Ortho Mode - 1		For bonding orthodontic brackets	1800	2 / 4 / 6
Ortho Mode - 2		For bonding orthodontic brackets	2700	1 / 2 / 3

# Vibrating Hand Instrument COMO<sup>®</sup>

# Composite Resin Heating Dispenser POMO<sup>®</sup>

## COMO

- Hand instrument where vibration is transmitted to the tip
- Less sticking to composite resin and easy to operate
- Allows to form a smooth surface of composite resin
- Exchangeable COMO tips for various uses
- Silicone cover for the body can be used for aseptic technique



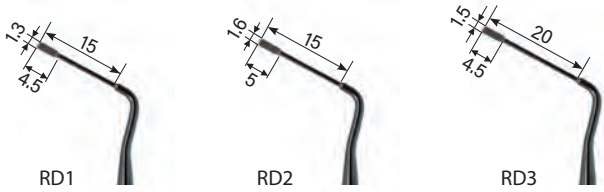

## POMO

- Heating dispenser for capsule-type composite resin
- 3 heat transfer modes
- Increases flowability by transferring heat to less flowable resin
- Improves marginal adaptation of composite resin restoration



## Components and Accessories

- COMO: CT1, main device( COMB-Black, COMW-White, COMP-Pink), silicone cover(COMS)
- POMO: main device(POMB-Black, POMW-White, POMP-Pink), silicone cap(POMS)
- Accessories(purchased separately) : COMO & POMO combo cradle(PCSB-Black, PCSP-Pink), COMO cradle(COSB-Black, COSP-Pink)

COMO Tip	Purpose	Shape	Surface
CT	For composite resin restoration	 <ul style="list-style-type: none"> <li>CT1 : for placement and shaping (paddle-shaped)</li> <li>CT2 : for placement and shaping (paddle-shaped)</li> <li>CT3 : for condensing composite (rounded end)</li> <li>CT4 : for forming occlusal anatomy (acorn-shaped)</li> </ul>	TiN Coated
CD	For composite resin restoration	 <ul style="list-style-type: none"> <li>CD1 : for micro-placement and creating pit/fissure</li> <li>CD2 : for condensing composite (small rounded end)</li> <li>CD3 : for creating occlusal pit/fissure</li> </ul>	DLC Coated
RD	For retrograde filling	 <ul style="list-style-type: none"> <li>RD1: 1.3mm width, 15mm length, 4.5mm height</li> <li>RD2: 1.6mm width, 15mm length, 5mm height</li> <li>RD3: 1.5mm width, 20mm length, 4.5mm height</li> </ul>	DLC Coated
VC	For condensing (Apexification)	 <ul style="list-style-type: none"> <li>VC1 (#45)</li> <li>VC2 (#50)</li> <li>VC3 (#60)</li> <li>VC4 (#70)</li> </ul>	DLC Coated

Educational Dental Model

# PRACTEETH™



Permanent Dentition

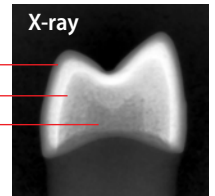
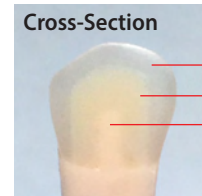


Deciduous Dentition

## Caries Tooth for PracTeeth Dentiform



Tooth Number	Caries
#3 / 6̄	Mesial
#5 / 4̄	Distal
#8 / 1̄	Distal
#9 / 1̄	Mesial
#12 / 14̄	Mesial
#14 / 16̄	Distal
#19 / 14̄	Distal
#21 / 16̄	Mesial
#28 / 4̄	Distal
#30 / 6̄	Distal



- 3-layered crown structure of enamel, dentin, and pulp
- Features radiographic images similar to natural teeth
- Provides caries simulated on the proximal side
- Suitable for cavity preparation and abutment tooth preparation

## Endodontic Tooth for PracTeeth Dentiform



- Features transparent root and red pulp
- Suitable for access opening and endodontic treatment except the apex
- Suitable for abutment tooth preparation as well



## Tooth model with root for RCT practice

# A-Chi®

- Reproduced the complex morphology of the canal such as isthmus and accessory canals
- Prepared access cavity opening
- Suitable for all endodontic procedure except access cavity preparation



Maxillary Premolar



Maxillary First Molar



Mandibular Premolar



Mandibular First molar



▶ WATCH NOW

## Customer Service

---

### USA

**B&L Biotech USA, Inc.**

✉ [customerservice@bnlbio.com](mailto:customerservice@bnlbio.com)

### Global

**B&L Biotech, Inc.**

✉ [support@bnlbio.com](mailto:support@bnlbio.com)



FEBRUARY 2023





*Where Innovation Meets Excellence*

# B&L BIOTECH

## Product Catalog

### B&L Biotech USA, Inc.

3959 Pender Drive, Suite 350, Fairfax, VA, 22030 USA  
TEL: +1 (703) 272-7507  
FAX: +1 (703) 272-7598  
WEBSITE: [www.bnlbio.com](http://www.bnlbio.com)

### B&L Biotech, Inc.

#502, 95 Gwangdeokdong-ro, Danwon-gu,  
Ansan-si, Gyeonggi-do, Korea 15462  
E-mail: [marketing@bnlbio.com](mailto:marketing@bnlbio.com)  
WEBSITE: [www.bnlbio.co.kr](http://www.bnlbio.co.kr)